

User's Manual

USB 2.0 PCI Host Card

Item No.: UC160A

SAFETY INSTRUCTIONS

Always read the safety instructions carefully

- ▣ Keep this user's manual for future reference
- ▣ Keep this equipment away from humidity
- ▣ Lay this equipment on a reliable flat surface before setting it up
- ▣ If any of the following situation arises, get the equipment checked by a service technician:
 - The equipment has been exposed to moisture
 - The equipment has been dropped and damaged
 - The equipment has obvious sign of breakage
 - The equipment has not working well or you cannot get it work according to this user's manual.

INTRODUCTION

Good way's USB 2.0 Hi-Speed PCI Card can runs at up to 480 Mbits / sec . Performance and allows to connect multiple peripherals devices simultaneously, meanwhile, it's fully backwards compatible, either the new USB 2.0 high performance devices or the existing legacy USB 1.1 ones .

FEATURES

- Compliant with Universal Serial Bus Specification Revision 2.0 (Data Rate 1.5/12/480 Mbps).
- Compliant with Open Host Controller Interface Specification for USB Rev 1.0A.
- PCI multi-function device consists of two OHCI Host Controller cores for full-/low-speed signaling and one EHCI Host Controller cores for high-speed signaling.
- Modular 32-bit 33MHz host interface compliant to PCI Specification release 2.2 .
- Support PCI Mobile Design Guide Revision 1.1.

- Support PCI-Bus Power Management Interface Specification release 1.1.
- Operational registers direct-mapped to PCI memory space.
- Legacy support USB 1.1 specification.
- Root Hub with 5(max) downstream facing ports which are shared by OHCI and EHCI Host Controller core.
- Link up to 127 USB Devices.
- Supported Windows 98SE/ ME / 2000 and Windows XP.

SPECIFICATIONS

Function	Specification
USB Connectors	4 external USB Port (Type A , Female) . 1 Internal USB Port (Type A , Female) .
Transfer Rate	1.5/12/480 Mbps
USB Spec	v2.0 and v1.1 Compatible
Operating Temperature	5 ~ 40°C
Storage Temperature	-20 ~80°C
Humidity	0 ~ 80%

SYSTEM REQUIRES

SUPPORTED O.S.:

O.S.	Functions	USB HI-SPEED PCI HOST CARD
Win 98SE		Vendor Supply
Win ME		Vendor Supply
Win 2000		Vendor Supply
Win XP		Vendor Supply
Mac X		Vendor Supply

Software Installation

1. Before driver installed, please not to arrange PCI host card on PCI slot of our PC.
2. Double click left mouse at “My Computer”, double click CD-ROM drive, driver folder, and Windows folder, then U2V2_062.exe

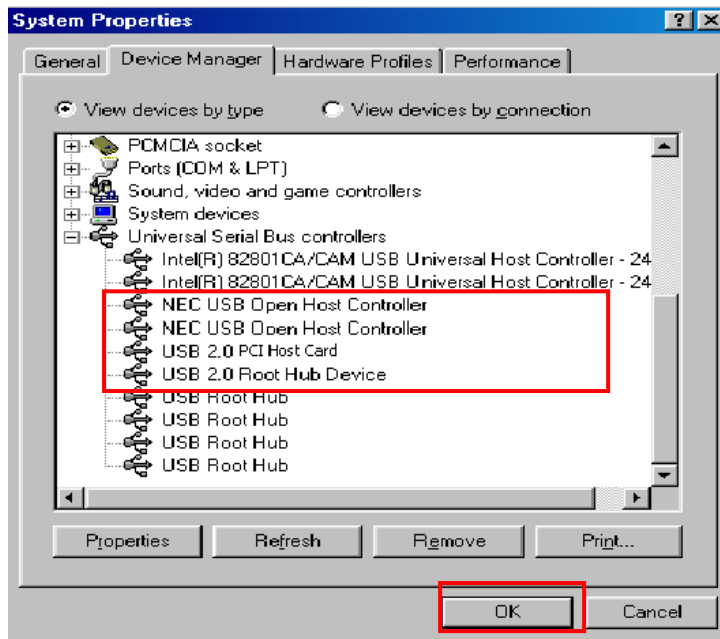


3. Turn off the power and install PCI host card into PCI slot of your PC and turn on the power.

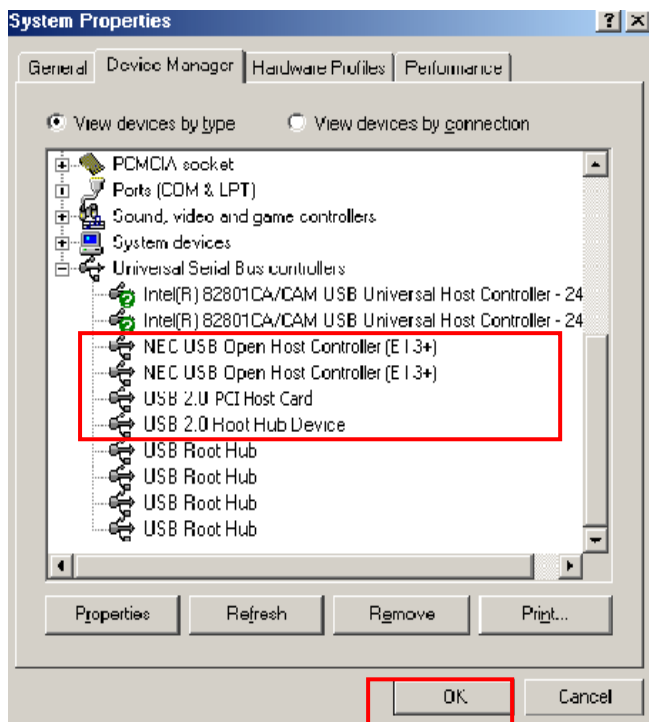
Windows 98se

4. This wizard searches for new drivers and click **Next**
5. What do you want Windows to do?
Select “ Search for the best driver for your device. [Recommended]”, and click **Next**.
6. Select “Specify a location” and keep the default setting then click **Next**
7. Windows driver file search for the device, and click **Next**
8. Windows has finishes installing the software, and click **Finish**.
9. Insert Windows 98 Second Edition CD-Rom in the selected driver and click **OK**.
The system will detect **base5.cab**, and click **OK**.
10. Windows has finished installing the software that your new hardware device requires, and click **Finish**.
11. Repeat step 4 to step 8 as needed.
12. Right click **My Computer**, select **Properties**, and **Device Manager** to verify the driver installation completed.

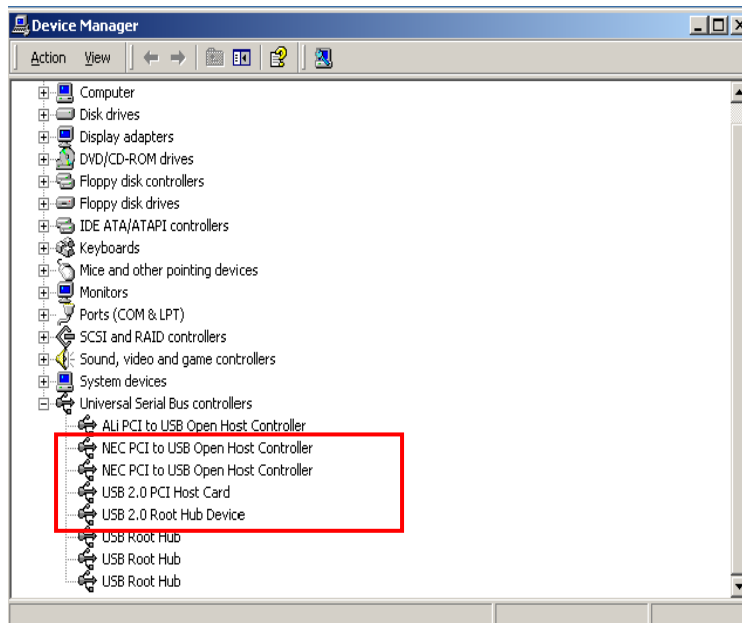
Windows 98se



Windows ME



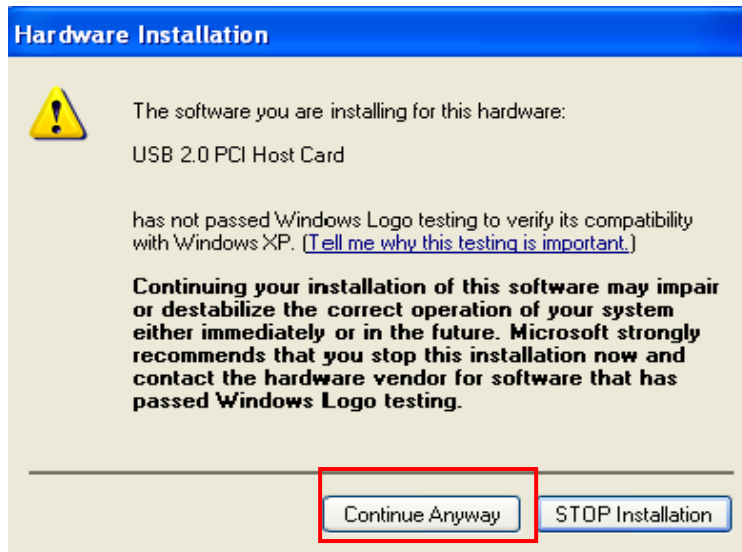
Windows 2000



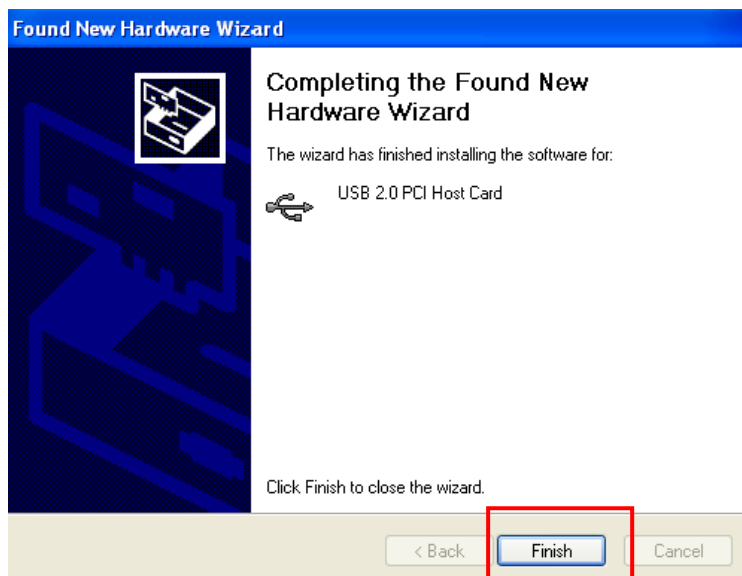
Windows XP



1. Select "Install the software automatically [Recommended]", and click **Next**.



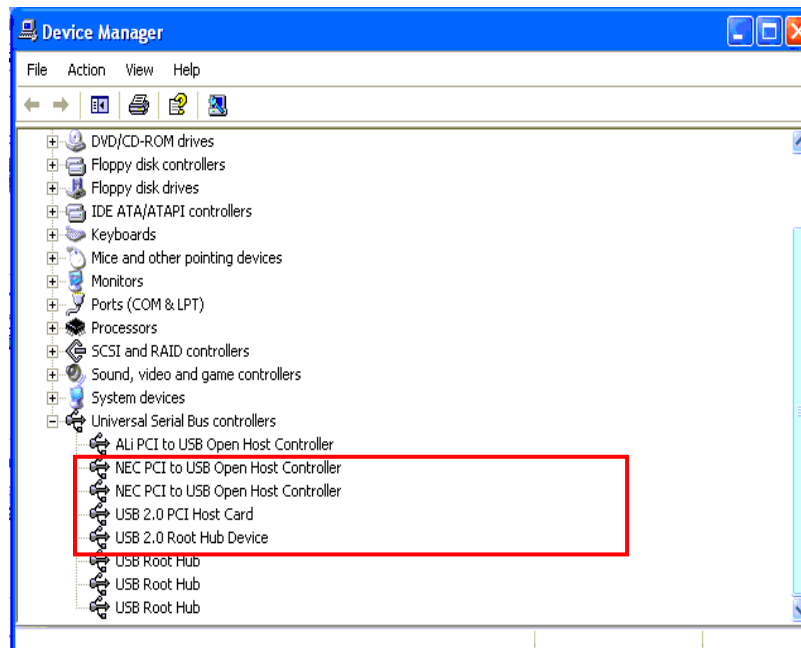
2. Click **Continue Anyway**



3. The wizard has finished installing the software, and click **Finish**

4. Repeat step 1 to step 3 as needed.

5. Right click **My Computer**, select **Properties**, and **Hardware**, then **Device Manager** to verify the driver installation completed.



Mac OS X (Version 10.1) Installation:

1. Click USB2EHCI-v1075.img.bin at our CD-ROM driver, it will generate USB2EHCI_v1075.img



USB2EHCI_v1075.img bin

2. Click "USB2EHCI_v1075.img", it will generate USB2EHCI-v1072 on desktop

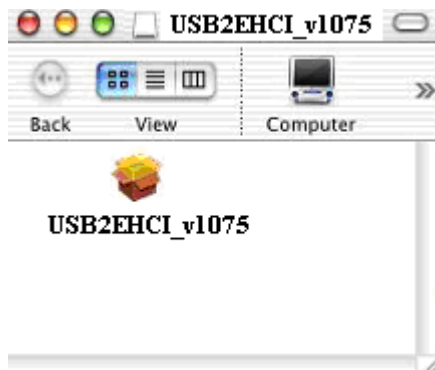


USB2EHCI_v1075.img

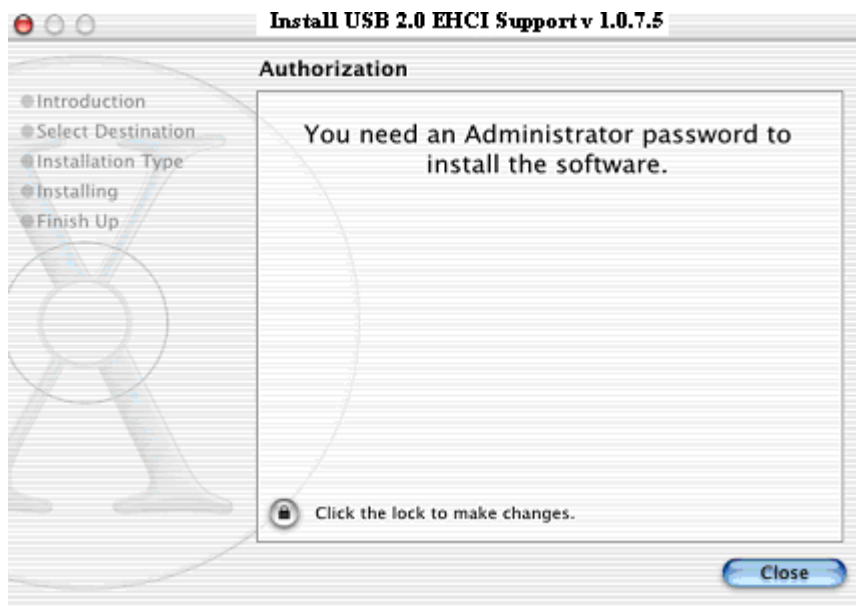
3. Click USB2EHCI-v1075 on desktop, there will be a pop-up window.



4. Click “ USB2EHCI_v1075”.



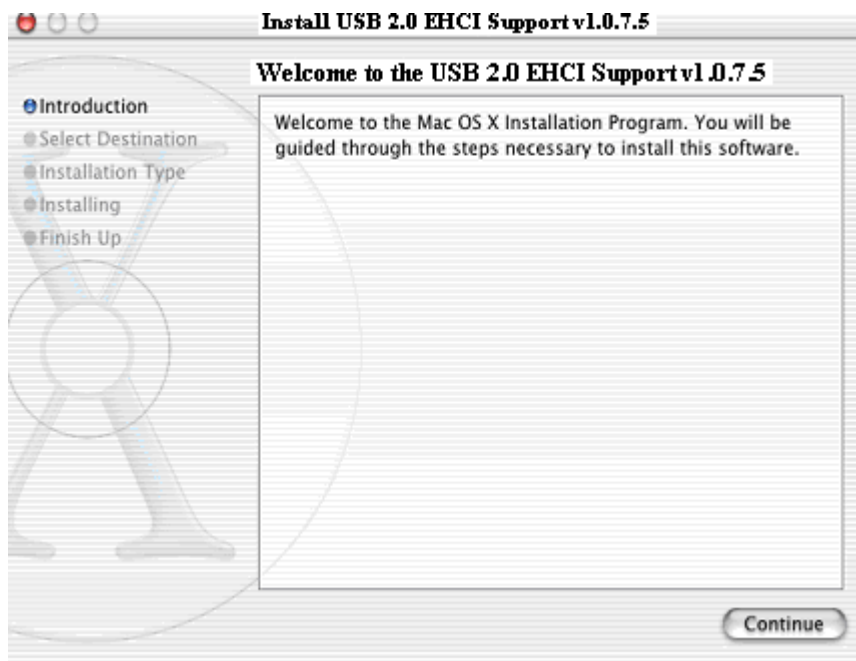
5. Please click the  to make changes.



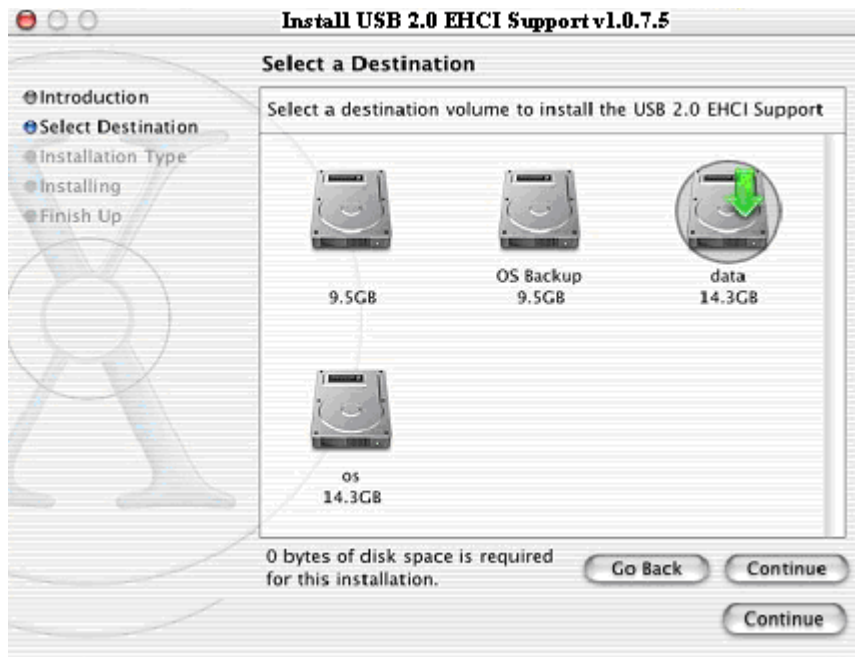
6. Enter Name, Password, and click **OK**.



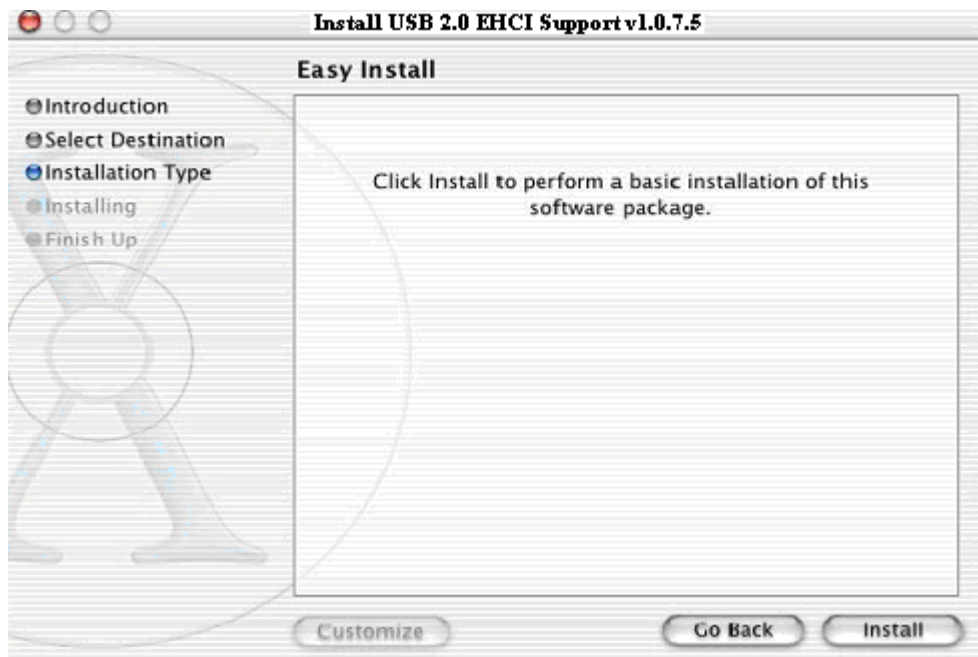
7. Click **Continue**



8. Please select a appropriate destination to install driver, and click **Continue**



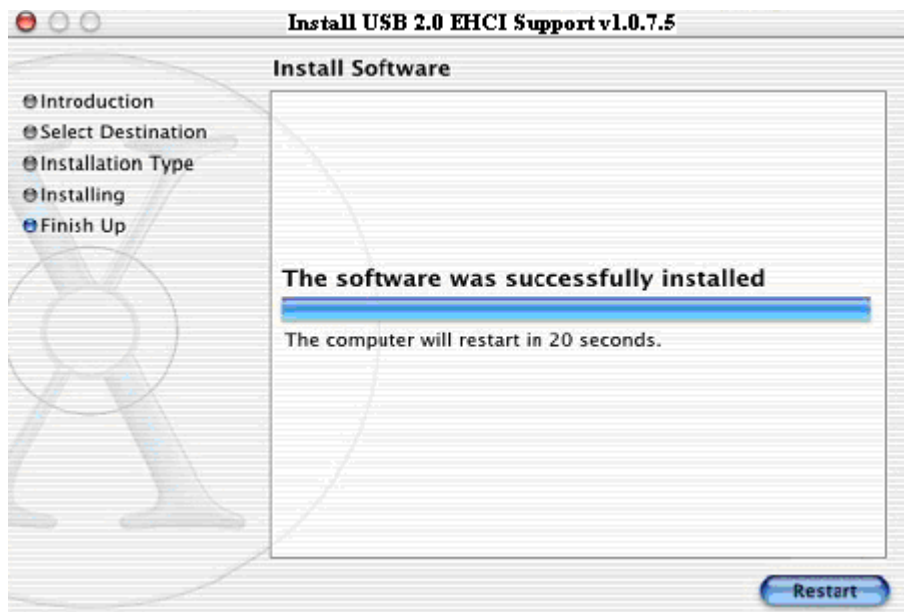
8. Click **Install**.



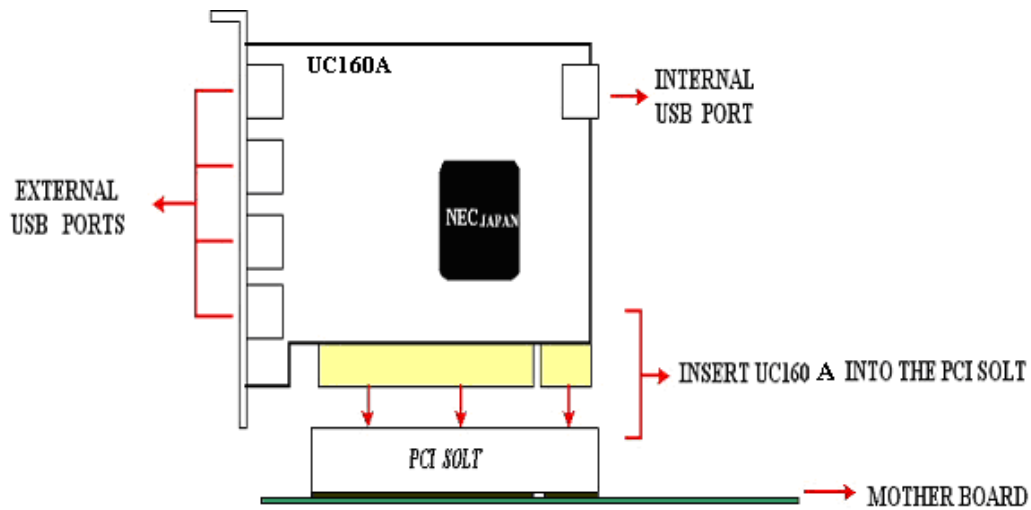
9. Click **Continue Installation**



10. Click **Restart**. After you restarting the system, the device is ready to be used.



HARDWARE INSTALLATION



CERTIFICATIONS

FCC

This equipment has been tested and found to comply with Part 15 of the FCC Rules.

Operation is subject to the following two conditions:

- (1) This device may not cause harmful interference
- (2) This device must accept any interference received. Including interference that may cause undesired operation.

CE – Certificate

This equipment is in compliance with the requirements of the following regulations: EN 55 022:

CLASS B

