

# User's Manual

## USB2.0+IEEE 1394 Combo Card

### Version 1.1

---

#### **Safety Instructions**

- Always read the safety instructions carefully
- Keep this User's Manual for future reference
- Keep this equipment away from humidity
- Lay this equipment on a reliable flat surface before setting it up
- If any of the following situation arises, get the equipment checked by a service technician:
  - The equipment has been exposed to moisture
  - The equipment has been dropped and damaged
  - The equipment has obvious sign of breakage
  - The equipment is not working properly or you cannot get it to work according to User's Manual

#### **Introduction**

The USB2.0 + IEEE 1394 Combo Card combines both USB 2.0 connections and FireWire connections into one single Card. Provides 2 USB 2.0 ports with speeds up to 480 Mbps performance and 3 FireWire ports with speeds up to 400 Mbps transmission. It is fully backwards compatible with the USB revision 1.1 peripheral devices. This Card allows you to plug-in any USB 2.0 and/or FireWire peripherals, such as, external storage devices, printers, scanners, DVD drives, CD-R/RW drives, MO (Magneto-Optical) drives, digital cameras and digital/DV camcorders.

#### **Features**

- Compliant with BOTH the Standard Specification of USB 2.0 and USB 1.1
- USB high-speed up to 480 Mbps data transfer rate
- Supports USB over-current detection and individual/gang power control
- High-speed detection indicator output
- Links up to 127 USB devices
- Legacy support USB 1.X and 2.0 specifications
- Compliant with IEEE 1394-1395 and compatible with 1394A
- Supports IEEE 1394 transfer rate of 100/200/400 Mbps
- Links up to 63 FireWire devices
- Supports Plug & Play specification
- Supports self-powered mode

- Supports cable powered mode with a power provider
- Provides a total of 5 ports — two (2) external downstream Type A USB ports, two (2) external FireWire ports and one (1) internal FireWire port

**System Requirements**

- IBM compatible Pentium-233MHZ or faster & MAC PC
- 64 MB RAM or more
- Available USB Port and IEEE 1394 Port
- Systems with OS: MS Windows 98SE / ME / 2000 / XP/Mac OS10.1 or high

**Package Contents**

- USB 2.0 + IEEE 1394 Combo Card
- Software CD Driver
- User Manual

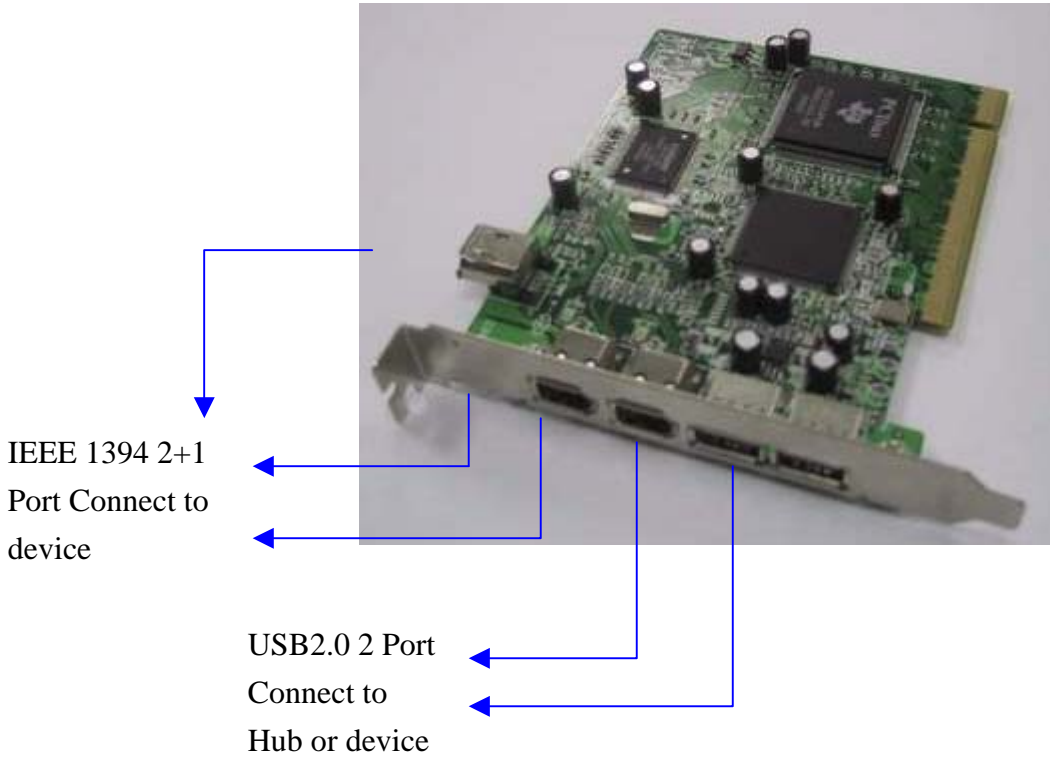
**Specifications**

- 2 USB Ports (Type A, Female).
- 3 IEEE1394 Ports (Type A, Female).
- PCI Specification Version 2.2.

**Driver Source of Supported OS:**

| <b>O.S.</b> | <b>Functions</b>   | <b>USB2.0+IEEE 1394 Combo CARD</b> |
|-------------|--------------------|------------------------------------|
|             | <b>98se</b>        | Vendor Supply                      |
|             | <b>ME</b>          | Vendor Supply                      |
|             | <b>2000</b>        | Vendor Supply                      |
|             | <b>XP</b>          | Vendor Supply                      |
|             | <b>MAC OS 10.1</b> | Vendor Supply                      |

## **HARDWARE INSTALLATION**

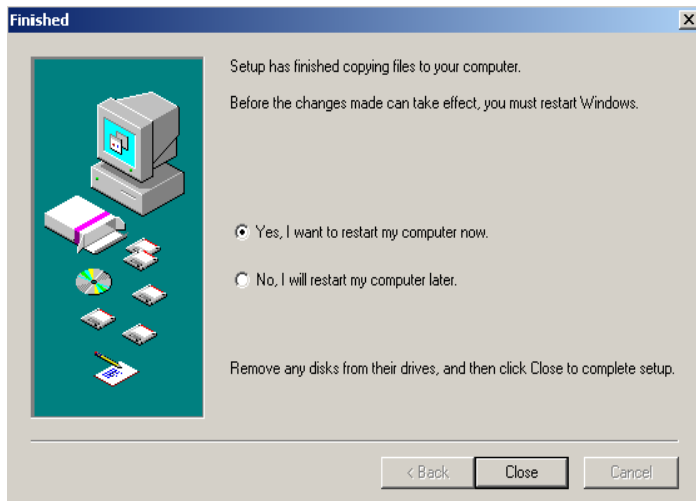


## **SOFTWARE INSTALLATION**

1. Make sure GoodWay Combo Card is at PCI slot of your PC and turn on the power then insert driver CD-ROM into CD-ROM drive
2. The system will detect the new device, and there will be a pop-up window, please click Cancel button as needed.



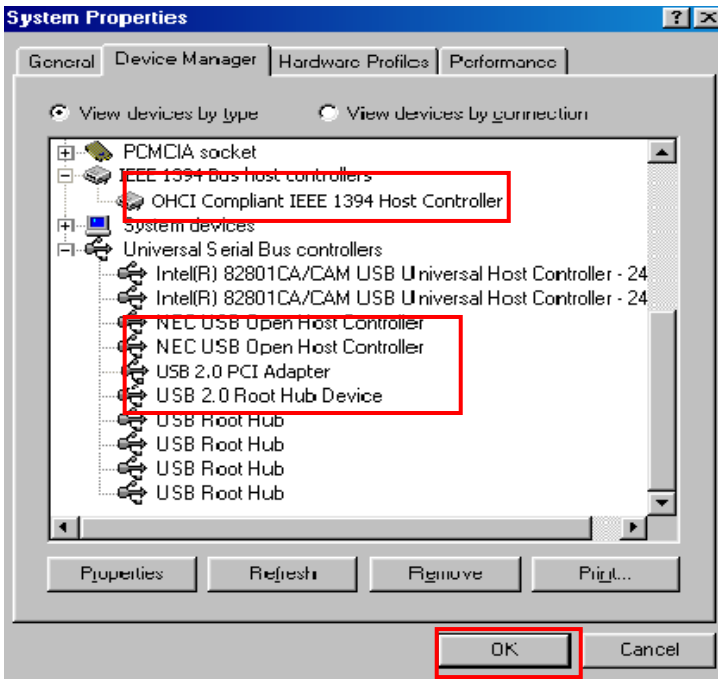
3. Double click left mouse at “My Computer”, double click CD-ROM drive, driver folder, and Windows folder, then U2V2\_062.exe



4. Setup has finished copying files to your computer. Select **Yes, I want to restart my computer now**, and click **Close**.

### **Windows 98se**

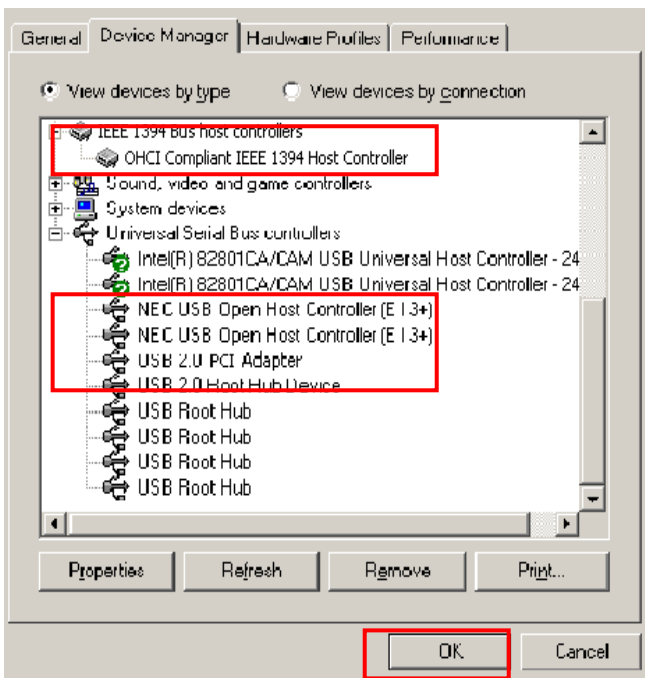
1. This wizard searches for new drivers and click **Next**
2. What do you want Windows to do?  
Select “ Search for the best driver for your device. [Recommended]”, and click **Next**.
3. Select “Specify a location” and keep the default setting then click **Next**
4. Windows driver file search for the device, and click **Next**
5. Windows has finishes installing the software, and click **Finish**.
6. Insert Windows 98 Second Edition CD-Rom in the selected driver and click **OK**.  
The system will detect **base5.cab**, and click **OK**.
7. Windows has finished installing the software that your new hardware device requires, and click **Finish**.
8. Repeat step 1 to step 5 as needed.



9. Right click **My Computer**, select **Properties**, and **Device Manager** to verify the driver installation completed.

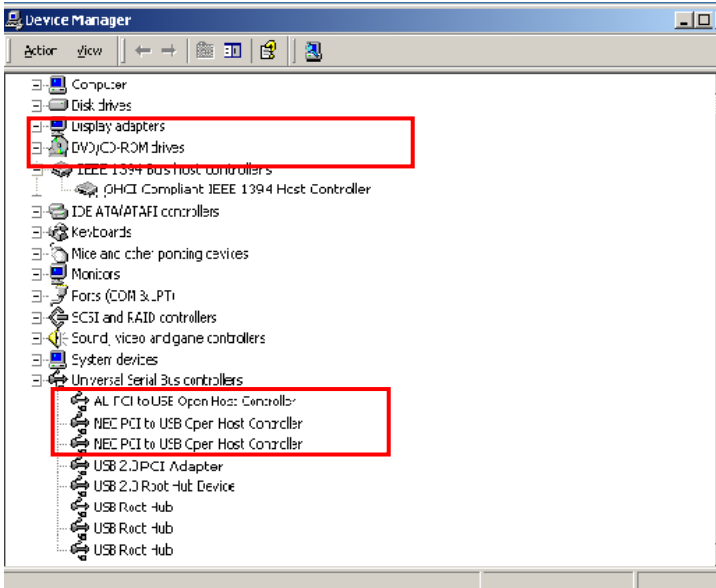
## Windows ME

Right click **My Computer**, select **Properties**, and **Device Manager** to verify the driver installation completed.



## Windows 2000

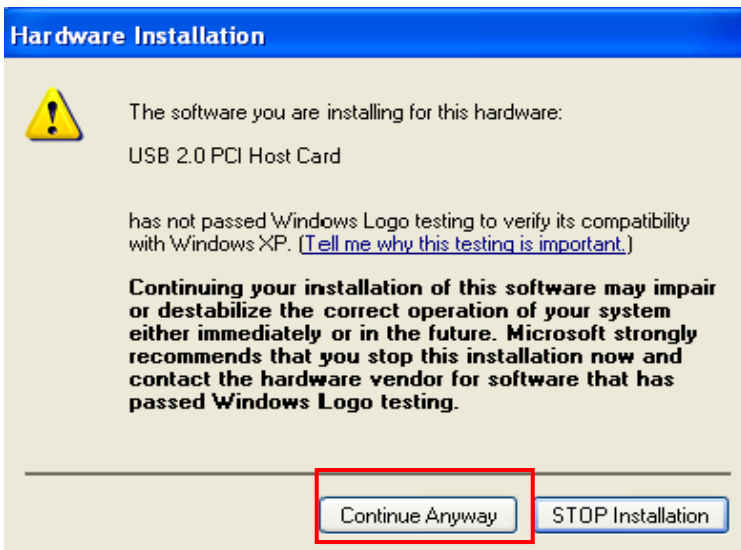
Right click **My Computer**, select **Properties**, and **Hardware**, then **Device Manager** to verify the driver installation completed.



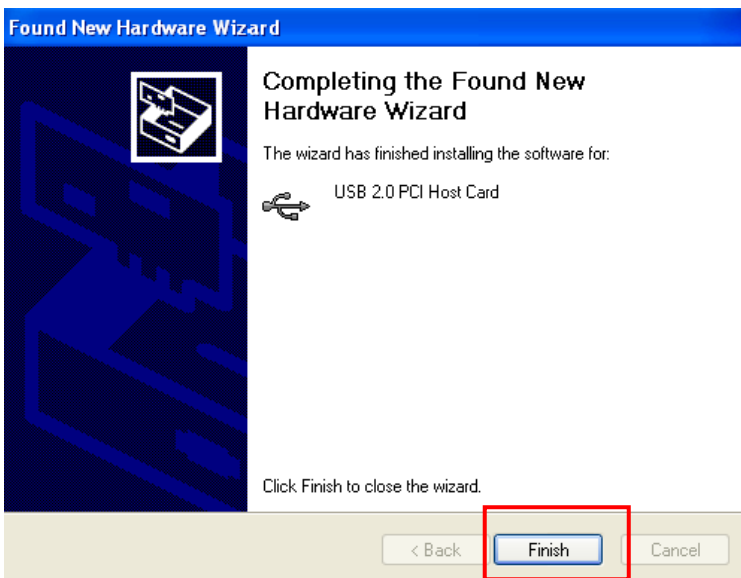
## Windows XP



1. Select “Install the software automatically [Recommended]”, and click **Next**.

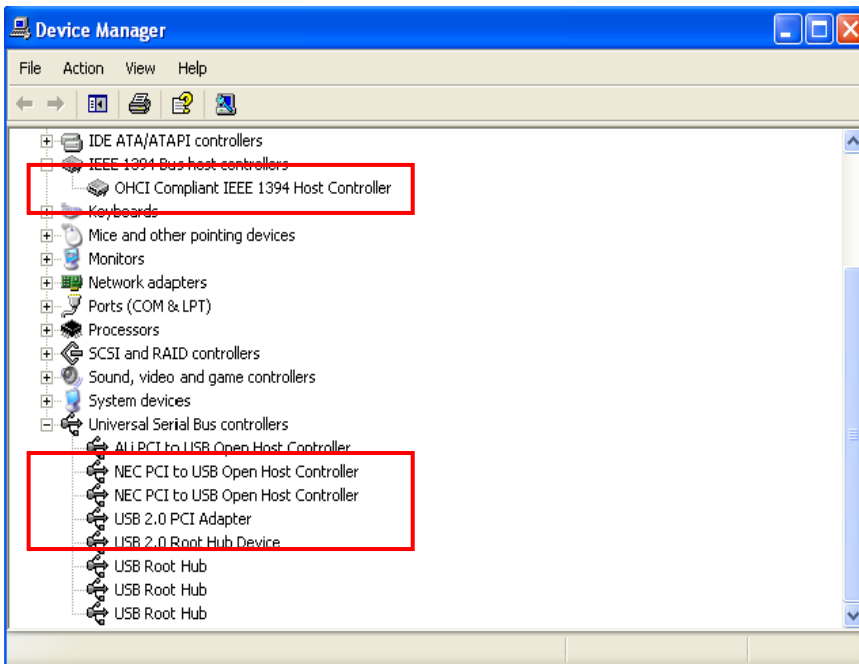


2. Click **Continue Anyway**



3. The wizard has finished installing the software, and click **Finish**

4. Repeat step 1 to step 3 as needed.



5. Right click **My Computer**, select **Properties**, and **Hardware**, then **Device Manager** to verify the driver installation completed.

**Mac OS X (Version 10.1) Installation:**



USB2EHCI\_v1072.img.bin

1. Click USB2EHCI-v1072.img.bin at our CD-ROM driver, it will generate USB2EHCI\_v1072.img



USB2EHCI\_v1072.img

2. Click “USB2EHCI\_v1072.img”, it will generate USB2EHCI-v1072 on desktop



3. Click USB2EHCI-v1072 on desktop, there will be a pop-up window.



4. Click “USB2EHCI\_v1072”.



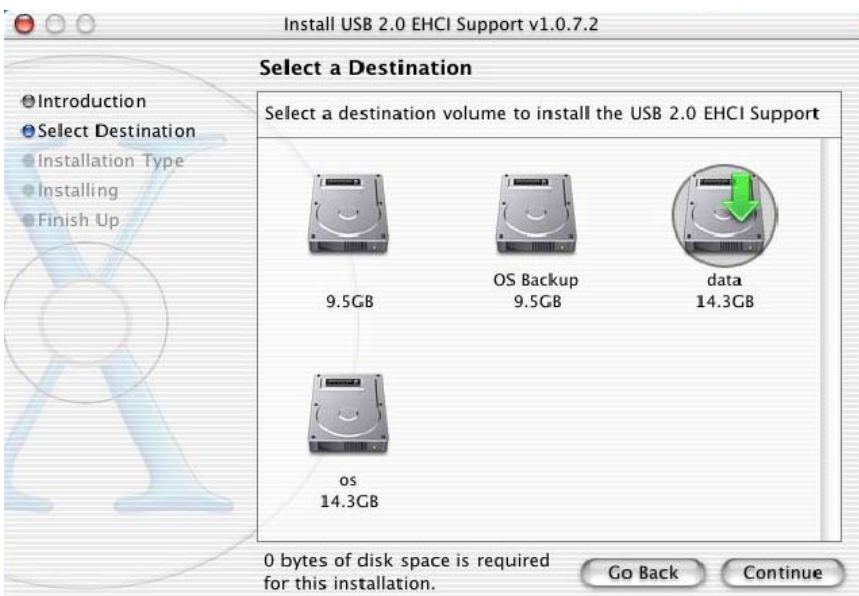
5. Please click the  to make changes.



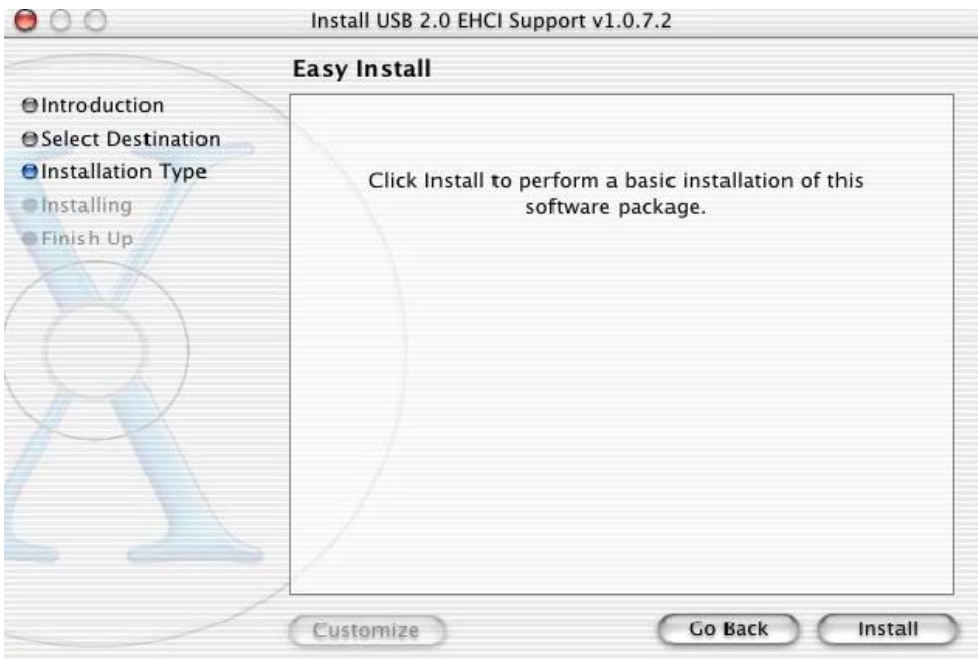
6. Enter Name, Password, and click **OK**.



7. Click **Continue**



8. Please select a appropriate destination to install driver, and click **Continue**



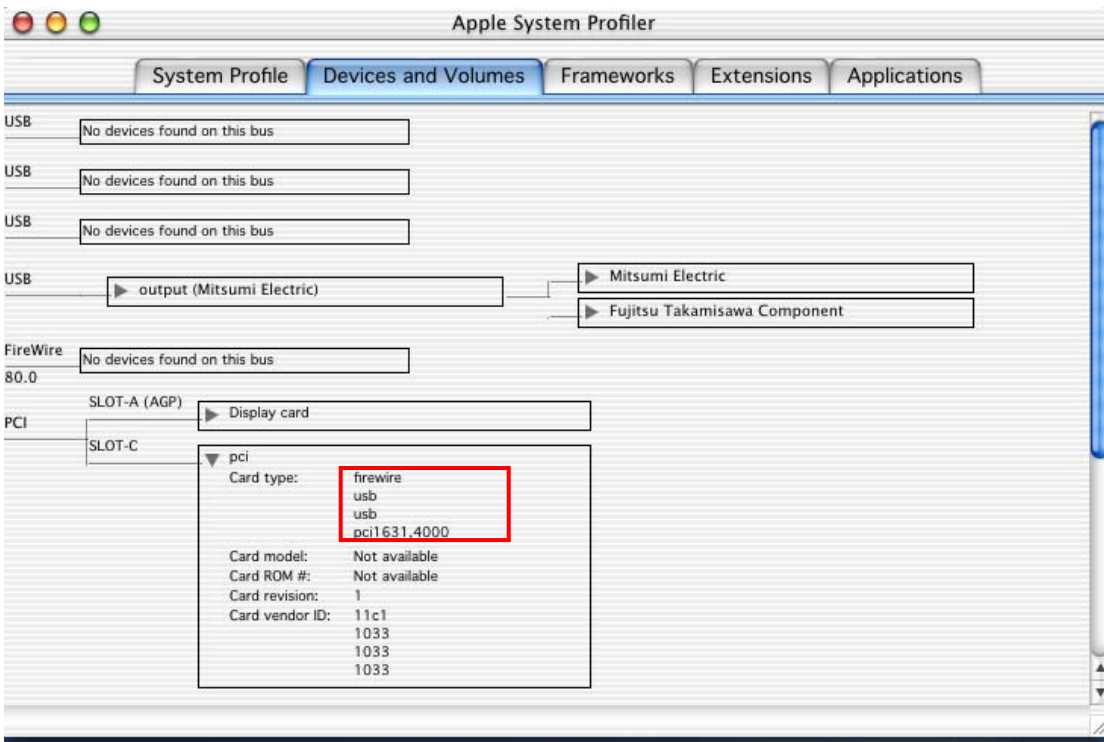
9. Click **Install**.



10. Click **Continue Installation**



11. . Click **Restart**. After you restarting the system, the device is ready to be used.



## **Certificate**

### ***FCC – Certificate***

This equipment has been tested and found to comply with Part 15 of the FCC Rules. Operation is subject to the following two conditions:

- (1) This device may not cause harmful interference
- (2) This device must accept any interference received. Including interference that may cause undesired operation.

### ***CE – Certificate***

This equipment is in compliance with the requirements of the following regulations: EN 55 022: CLASS B



## **DISCLAIMER**

Information in this document is subject to change without notice. The manufacturer does not make any representations or warranties (implied or otherwise) regarding the accuracy and completeness of this document and shall in no event be liable for any loss of profit or any

commercial damage, including but not limited to special, incidental, consequential, or other damage.

No part of this document may be reproduced or transmitted in any form by any means, electronic or mechanical, including photocopying, recording or information recording and retrieval systems without the express written permission of the manufacturer.