

USB 2.0 Single Slot Card Reader

# **User's Manual**

## **Safety Instructions**

Always read the safety instructions carefully

- Keep this User's Manual for future reference
- Keep this equipment away from humidity
- If any of the following situation arises, get the equipment checked by a service technician:
  - The equipment has been exposed to moisture.
  - The equipment has been dropped and damaged.
  - The equipment has obvious sign of breakage.
  - The equipment has not been working well or you cannot get it work according to User's Manual.

## **Copyright Statement**

No part of this publication may be reproduced in any form by any means without the prior written permission. Other trademarks or brand names mentioned herein are trademarks or registered trademarks of their respective companies.

## **Disclaimer**

Information in this document is subject to change without notice. The manufacturer does not make any representations or warranties (implied or otherwise) regarding the accuracy and completeness of this document and shall in no event be liable for any loss of profit or any commercial damage, including but not limited to special, incidental, consequential, or other damage.

All trademarks, trade names and copyrights are properties of their respective owners.

January 2007, Ver 1.0

# Table of Contents

<b>1. Introduction .....</b>	<b>3</b>
Features .....	3
Package Contents .....	3
System Requirements.....	4
<b>2. Installation .....</b>	<b>4</b>
Under Windows.....	4
Under Mac.....	4
Removing a Card / Ejecting the Card Reader .....	4
Under Windows .....	4
Under Mac .....	5
<b>3. Using Windows ReadyBoost.....</b>	<b>6</b>
<b>4. Specifications .....</b>	<b>9</b>
<b>5. Regulatory Compliance .....</b>	<b>10</b>
FCC Conditions .....	10
CE .....	10
WEEE Information .....	10

# 1. Introduction

This USB 2.0 Single Slot Card Reader is a portable device that supports reading and writing Secure Digital™ Card (SD and MultiMedia™ Card (MMC) series memory cards. It's Plug-and-Play; just plug it into a free USB port on your computer and it's ready to use. Another benefit is that it supports the new generation high-speed and high-capacity memory cards, e.g, SD version 2.0 and MMC version 4.2, ensuring you get the high performance brought by these memory cards. What's best, the card reader supports Windows® ReadyBoost™, a feature allowing you to use a memory card to increase the available memory for Windows Vista. You can use part of a card to enhance system performance and at the same time use the remaining part as a storage media, letting you get the most out of one memory card.

## Features

- Supports SD and MMC series memory cards
- Supports Windows® ReadyBoot™ to enhance system performance (needs ReadyBoost capable memory card, not provided)
- Supports high-speed and high-capacity memory cards, e.g. SDHC Class 6, MMC 4.2
- High performance, SD reading speed up to 20MB/s
- Supports USB 2.0 transfer rate of up to 480 Mbps
- Supports hot-plugging & Plug-and-Play
- No additional driver installation required

## Package Contents

- |                                   |    |
|-----------------------------------|----|
| ■ USB 2.0 Single Slot Card Reader | x1 |
| ■ User's Manual                   | x1 |
| ■ USB Cable (Optional)            | x1 |

## System Requirements

- IBM compatible Pentium-233 MHz or faster PC & Mac with USB port
- Windows® ME, 2000, XP, Vista; Mac OS 9.x /10.x

## 2. Installation

To use the card reader, no additional driver installation is required. Simply plug the card reader into your computer's USB port and it's ready to use. Make sure to insert your memory card in correct orientation (with the gold contacts facing down) to ensure the card can be detected.

### Under Windows

When the card reader is inserted to your computer, a removable disk icon with an assigned drive letter will appear in **My Computer**. You can write and read files to and from the card in the device as you would with an ordinary disk drive.

### Under Mac

The inserted memory card will mount to the desktop and appear as removable media devices. (The name and appearance of each icon depends on the card's format and label.)



## Removing a Card / Ejecting the Card Reader

### Under Windows

Before unplugging the card reader from your computer, please use the unplug/eject hardware icon in the system tray to safely remove the device.

---

**Caution:** Before removing a memory card or unplugging the card reader from your laptop, make sure that no file is being accessed by an application or being copied.

---

1. In the notification area, right-click the unplug/eject icon and select **Unplug or eject hardware** or **Safely Remove Hardware**.



2. Select the device you want to unplug, then click **Stop** and **OK**.
3. When Windows notifies you that it is safe to do so, click **OK** and eject the card reader from your computer.

## Under Mac

For Mac, remember to drag the corresponding icon representing the card to the trash can before extracting a card.

When prompted, click **OK** and now you can extract a card.

## 3. Using Windows ReadyBoost

To use Windows ReadyBoost, first you should make sure your memory card is ReadyBoost capable as follows:

- Must have 2.5 MB/s random read performance for 4 KB reads across the entire device.\*
- Must have 1.75 MB/s random write performance for 512 KB writes across the entire device.\*

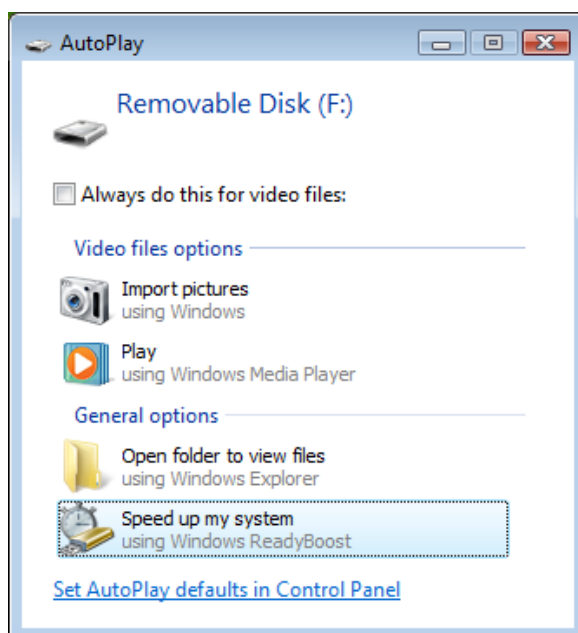
\*Some memory cards have fast parts and slow memory, and this type of card isn't supported.

Actual requirements (such as the card's minimum storage capacity) depend on Microsoft. Always consult with the supplier of your memory card to ensure the card is ReadyBoost compatible.

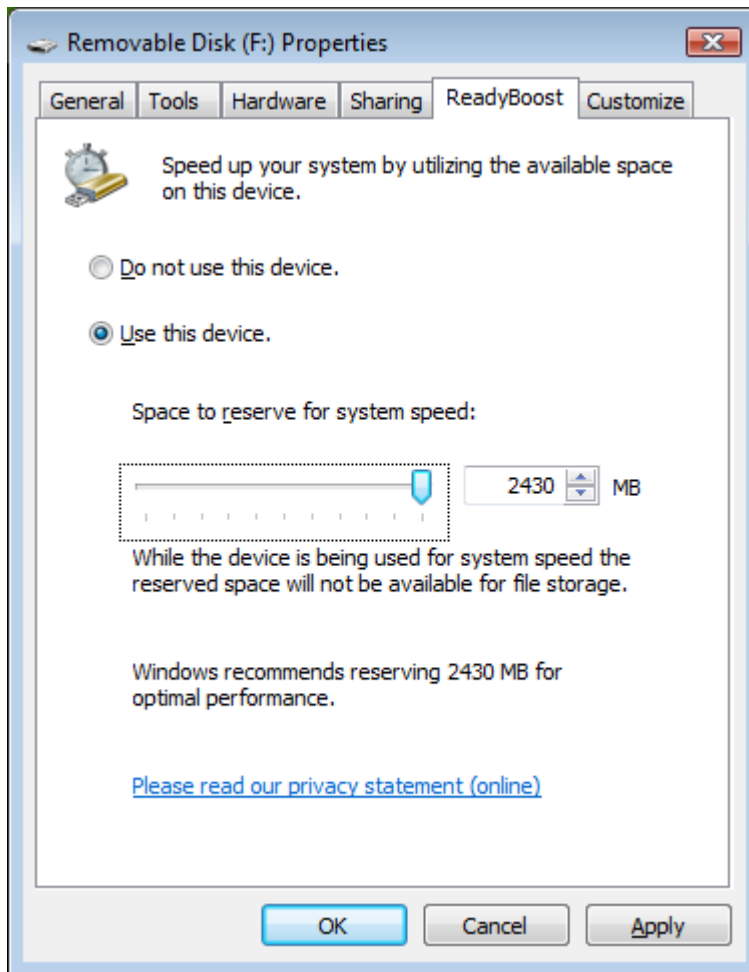
To use ReadyBoost:

1. With your memory card inserted, plug the card reader to the USB 2.0 port of a computer that is installed with Windows Vista.
2. When the AutoPlay dialogue box appears, select **Speed up my system** to configure and enable Windows ReadyBoost.

If your card isn't ReadyBoost compatible, you will not see the **Speed up my system** option.



3. On the **ReadyBoost** tab, click **Use This Device**, and then move the slider to choose how much of the available space on your flash drive you want to reserve for boosting your system speed. Then click **OK**.



If the Windows ReadyBoost option doesn't start automatically, you can manually enable Windows ReadyBoost by these steps:

1. Open **Windows Explorer** and navigate to **My Computer**.
2. Right-click on the removable disk representing your card reader and click **Properties**.
3. Click the **ReadyBoost** tab and make the configurations.

If the ReadyBoost tab is not available, then the memory card doesn't support Windows ReadyBoost.

Once ReadyBoost is enabled, you can remove the card reader at any time without causing problems or losing data. All you will lose is the extra performance that Windows ReadyBoost offers, and you will get the performance back when you re-plug the card reader.

If the card is then used in another Vista computer with a different space reserved for ReadyBoost, when you re-insert it to the original computer you will still get the performance because the system will remember your allocation.

## 4. Specifications

Items	Descriptions
<b>Supported Cards</b>	<p><b>SD specification v1.0/1.1/2.0</b></p> <ul style="list-style-type: none"> <li>• Direct access: SD</li> <li>• Using adapter: Mini SD, Micro SD, T-Flash</li> </ul> <p><b>MMC specification v3.x/ v4.0/ v4.1/ v4.2</b></p> <ul style="list-style-type: none"> <li>• Direct access: MMC, HS-MMC, MMC Plus</li> <li>• Using adapter: RS MMC, MMC Micro, MMC Mobile</li> </ul>
<b>Host Interface</b>	USB 2.0 A Type male connector
<b>Socket</b>	One SD/MMC socket
<b>Transfer rate</b>	Up to 480 Mbps via USB 2.0; up to 12 Mbps via USB 1.1
<b>Certification</b>	CE, FCC

\*Specifications are subject to change without further notice.

## 5. Regulatory Compliance

### FCC Conditions

This equipment has been tested and found to comply with Part 15 of the FCC Rules. Operation is subject to the following two conditions:

- (1) This device may not cause harmful interference
- (2) This device must accept any interference received. Including interference that may cause undesired operation.

### CE

This equipment is in compliance with the requirements of the following regulations:  
EN 55 022: CLASS B

### WEEE Information

For EU (European Union) member users:  
According to the WEEE (Waste electrical and electronic equipment) Directive, do not dispose of this product as household waste or commercial waste. Waste electrical and electronic equipment should be appropriately collected and recycled as required by practices established for your country. For information on recycling of this product, please contact your local authorities, your household waste disposal service or the shop where you purchased the product.

