



AI ***Inside*** ***SMARTER*** ***Outside***

CATALOGUE

02 About Good Way

03 ArgusPTZ

07 Smart Management

10 Conference & Hybrid Working

14 Thunderbolt™

20 USB4

22 Elderly Care

29 Products List

ABOUT GOOD WAY

Good Way Technology Co., Ltd., founded in 1983, specializes in the R&D and manufacturing of computer peripherals and wireless consumer products, backed by over 40 years of solid experience and technical expertise. With the mission of "Connecting Technology, Enabling Smart Living," Good Way continues to invest in AI applications, conference solutions, and human care fields, driving innovation through hardware and software integration.

In the AI sector, Good Way combines Edge AI computing, NPU modules, and docking technologies to develop intelligent docking stations and remote management platforms, empowering enterprises toward smarter operations. Its conference solutions cover wireless display, video capture, extenders, and booking consoles, enhancing remote collaboration and meeting efficiency. In the human care field, Good Way integrates IoT with docking products to promote smart home applications and elderly care innovations.

Good Way has established a complete global R&D and operations network, including offices in Taipei, Shanghai, and the United States, along with self-owned factories in Vietnam, Kunshan, and Taipei. All manufacturing facilities are ISO 9001 (Quality Management System) and ISO 14001 (Environmental Management System) certified, ensuring superior product quality, environmental responsibility, and sustainable operations.

Leveraging strong technical capabilities and long-standing partnerships with global leaders such as Intel, Google, Microsoft, and Apple, Good Way consistently delivers innovative products that meet international standards such as Thunderbolt™, USB4, and WWCB, and has achieved multiple world-first certifications. Moving forward, Good Way will continue to focus on AI technology, smart connectivity, and human-centered design to create efficient and seamless digital experiences, aiming to become a global leader in smart connectivity solutions.

Headquarters / Good Way Technology Co., Ltd.



Tel : +886-2-8919-1200
Fax : +886-2-8919-1220
E-mail : sales@goodway.com.tw
Website : www.goodway.com.tw
3F, No. 135, Ln. 235, Baociao Rd., Sindian Dist.,
New Taipei City 231, Taiwan

Branch Offices



GWC Technology Inc. (U.S.A.)
Tel : +1-626-820-0665
Fax : +1-626-820-0949
E-mail : sales@gwctech.com
Toll Free : 1-800-699-1529
154 N. Aspan Ave. Azusa,
CA 91702 U.S.A.



Good Trend Technology Co., Ltd. (Shanghai, China)
Tel : +86-21-6405-8810
Fax : +86-21-6405-8815
Room 8C,8F, Building E, No.50,
Lane2080, Lianhua Rd., Minhang
District, 201103, Shanghai, P.R. China

Manufacturing Sites



Good Way Technology Co., Ltd.
Tel : +886-2-2695-2100
Fax : +886-2-2695-2130
E-mail : sales@goodway.com.tw
4F., No.43, Zhongxing Rd. Xizhi Dist.,
New Taipei City 221012, Taiwan



Good Way Electronics Co., Ltd.
Tel : +86-512-5786-0888
Fax : +86-512-5786-0800
E-mail : sales@goodwayks.com.cn
No.101, Hengchangjing Road,
Zhoushi Town, Kunshan City,
Jiangsu 215337, P.R China



Good Way Technology Vietnam Company Limited
Lot E2-1 (belongs to Lot E2), Lien
Ha Thai Industrial Park (Green iP-1),
Thai Thuy district, Thai Binh
province, Vietnam.

- Copyright © 2024 Good Way Technology. All rights reserved.
- All services and products' photos, pictures, specifications, function descriptions, or predictions are provided as reference for clients only. All services and products are provided by the agreed written between clients and us. Please contact our sales representatives for more information per your needs.
- All IP properties and information, including photos, trademarks, logos, patents, technologies and etc. of the brochures, are the properties for Good Way Technology or the authorized parties by law, including but not limited to HDMI technology and etc.. All brochures' information related to Product's or Services' performances, functions and etc., could be referenced reports from professional specific Labs' or certified units' or the authorized parties' self-evaluation for commercial applications.

ArgusPTZ

Transform Conventional PTZ Cameras into AI-driven Devices.

ArgusPTZ integrates vision AI, voice AI, and language model with edge computing for real-time, intelligent PTZ control. This smart and flexible solution can simultaneously control multiple PTZ cameras.



AI for Camera Orchestration



Game-Changing AI for Multi-Camera Orchestration!

Good Way ArgusPTZ System features AI visual recognition to locate specific targets. It can control multiple IP PTZ cameras to maintain target tracking. Using language model, the device establishes a "Director Mode," where AI generates camera movement instructions for multiple cameras, achieving various effects that can be recorded or transmitted to backend storage and post-processing.

Through voice communication, the AI natural language interface allows for directing camera movement styles or changing tracking targets, such as switching people, vehicles, or designated objects. The camera movement isn't limited to centralized tracking — it can also perform split or grouped actions.



ALL IN ONE

Vision AI + Voice AI
+ LM AI



COMPLETE EDGE COMPUTING

Ensures the privacy of
your images and data



COST-EFFECTIVE AI UPGRADE

Transform your
conventional PTZ
cameras into AI-driven
devices
(ONVIF or VISCA)



VOICE

Effortless interactions
with GUI and voice
commands

Feature



1 Control multiple PTZ

Simultaneous management and operation of camera clusters (4, 8, 12, or more, depending on hardware specifications).

2 Vision AI

Supports facial, vehicle, clothing, and object detection with custom-trained models.

3 Comprehensive management features

Configure camera groups, schedules, and event-triggered actions easily.

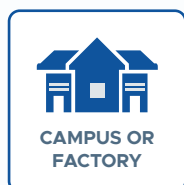
4 Voice AI & Language Model

Simply speak, and ArgusPTZ understands your intent. Easily switch tracking targets and execute complex pan/tilt sequences via voice commands.

Usage Scenarios

Security and Surveillance

Utilize AI tracking for continuous monitoring and automated response in large facilities, reducing the need for manual camera adjustments.



Live Events

Enhance live events, concerts, and studio productions with AI driven camera control for dynamic and automated multi-camera setups.



And many more: farms, ranches, military...

The versatile applications of AI-driven camera control extend to numerous other industries, offering tailored solutions to meet specific needs.

Specification

We offer both integrated system solutions (including consumer-grade or industrial-grade hosts preloaded with ArgusPTZ) and installable software solutions.

Software

- Supported protocols for PTZ camera movement: **ONVIF** profile S, VISCA.
- Edge AI vision processing & camera movement controlling.
 1. Pan, tilt, zoom movement.
 2. Searching & tracking specific targets or target categories.
 3. Detecting & tracking strangers.
 4. Performing cameras scheduled tasks & event-triggered tasks.
 5. Dynamic framing adjustment during tracking.
- Features
 1. Camera management
 - Setting of IP, location, PTZ protocol & camera group.
 - Setting of boundaries, pan speed, tile speed & tracking sensitivity.
 2. Target management
 - Adding target by uploading image or capturing from camera.
 - Editing target name & category.
 3. Task management
 - Creating scheduled or event-trigger tasks with priority.
 - Editing instruction with drag-and-drop movement blocks.
 - Task and Event dashboard.
 4. System management: system health check and etc.

Hardware

- CPU: Intel Core™ Ultra 125H
- SSD: 500GB
- MEM: 64GB
- AI Processor: NPU included

ArgusPTZ is an innovative software and AI application product with the potential for future expansion beyond its current hardware platform.

A modern office environment with several white desks arranged in a cluster. Each desk is equipped with a computer monitor, keyboard, and mouse. Green ergonomic office chairs are positioned at each workstation. Large windows on the left side of the office provide a view of lush greenery and palm trees outside. The overall aesthetic is clean and professional.

SMART MANAGEMENT

Elevate Your IT Management with Intelligent Dock Solutions

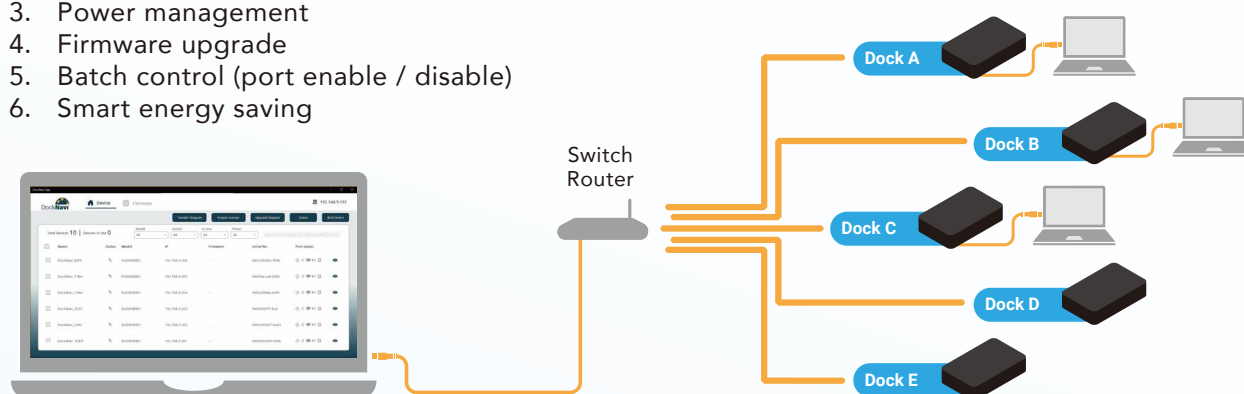
Good Way's DockNavi provide IT administrators with a powerful, unified solution for remote dock management, seamless updates, energy savings, and comprehensive resource monitoring. Simplify your operations and enhance efficiency.

DockNavi APP Edition

Ideal for small to medium-sized offices or rapid deployment scenarios, the app version only requires installing a desktop application—no server setup is needed.

Features

1. Device management
2. Port status indicator
3. Power management
4. Firmware upgrade
5. Batch control (port enable / disable)
6. Smart energy saving

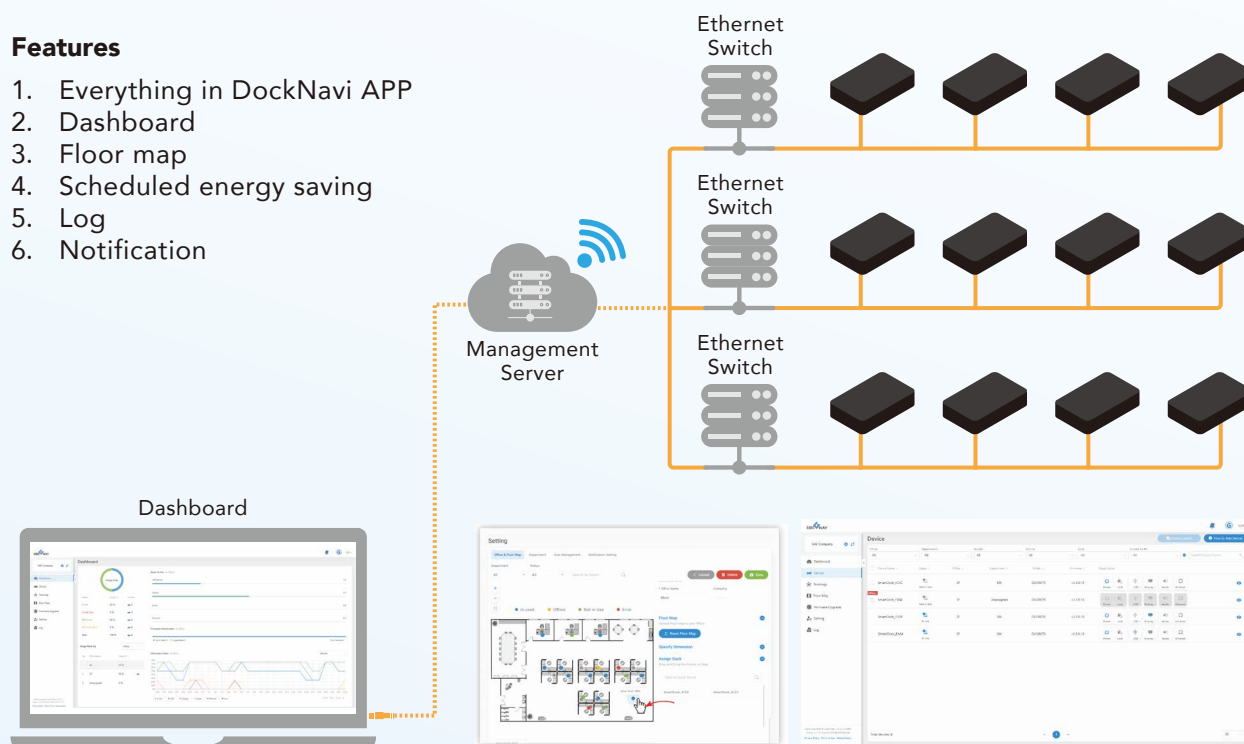


DockNavi Server Edition

Designed for large enterprises and multi-site offices, the server version can be deployed on public clouds (such as AWS) or private clouds (on-premises) and offers the most comprehensive set of features.

Features

1. Everything in DockNavi APP
2. Dashboard
3. Floor map
4. Scheduled energy saving
5. Log
6. Notification



DUD8380



USB-C Universal Dual 4K Smart Dock

- USB-C DisplayLink technology.
- 2x DP/HDMI, Dual 4K60 displays.
- Scheduled power on / off settings for better energy-saving performance.
- Remote dock management, firmware upgrade, and more features via DockNavi software.
- Ideal for mass dock deployment and management.
- USB-C UFP with PD charging up to 96W.
- USB DFP with 2x USB-C 10G (one with PD20W), 2x USB-A 5G, and 3x USB-A 10G, Built-in LAN and audio ports.

DUD8390



USB-C DP1.4 MST Smart Dock

- USB-C DP1.4 MST technology.
- 2xDP and 1x HDMI, Dual 4K60, or triple displays at 4K30.
- Scheduled power on / off settings for better energy-saving performance.
- Remote dock management, firmware upgrade, and more features via DockNavi software.
- Ideal for mass dock deployment and management.
- USB-C UFP with PD charging up to 96W.
- USB DFP with 2x USB-C 10G, 2x USB-A 10G, and 2x USB-A 5G, Built-in LAN and audio ports.

DBD8400



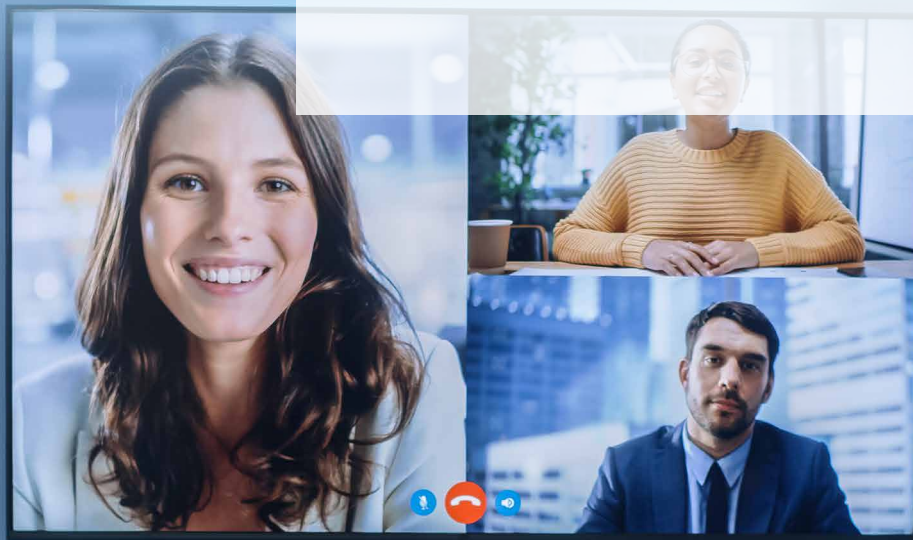
Thunderbolt™ 4 Smart Dock

- Thunderbolt™ 4 Technology.
- 1xThunderbolt™ port and 2x DP output, dual 4K60 displays.
- Scheduled power on / off settings for better energy-saving performance.
- Remote dock management, firmware upgrade, and more features via DockNavi software.
- Ideal for mass dock deployment and management.
- One Thunderbolt™ 4 UFP with PD charging up to 90W.
- USB DFP with 1x Thunderbolt™ 4 / USB-C, 1x USB-C 10G, 3x USB-A 10G, and 1xUSB-A 2.0, built-in LAN and audio ports.

CONFERENCE & HYBRID WORKING

Seamless Connectivity for Modern Workspaces

Enabling easy collaboration from meeting rooms to personal devices, with stable, intuitive, and flexible connectivity for any workspace.



DUD7440



Conference Mate

- Tailored for end-user conferencing needs.
- 3.5mm earphone / mic jack with built-in noise cancellation.
- 15cm tethered USB-C cable for stable, convenient connectivity.
- USB-A 3.2 Gen 1 (5Gbps) for high-speed data transfer.
- HDMI 2.0 supports 4K60 video output.

VSD5340



Speaker Phone

- Easily connect multiple devices for seamless conferencing through a compact and travel-friendly speakerphone.
- Supports PD 3.0 and USB 3.1 Gen 2 for fast charging and data transfer.
- Delivers sharp visuals with 4K60HDR support via HDMI.
- Compact design with multiport connectivity—great for meetings, charging, and media.
- Built-in ANR, AEC, and AGC for noise reduction and echo cancellation.
- Built-in lithium battery powers meetings or music for more than 5 hours.

DMB7241



Booking Dock

- Built-in SoC supports integration with Outlook and third-party booking software for smart workspace management.
- Occupancy detection enables automatic check-in, check-out, and bump-out for efficient seat usage.
- Equipped with USB-A, USB-C, HDMI, DP, and LAN ports to support various office devices.
- 180W DC input and up to 96W USB-C PD charging to power multiple devices.
- 5" LCD touch panel provides a simple and intuitive user interface for easy operation.

DUG7380



75W GaN Dock

- The New 75W GaN Charger dock is designed for extra connectivity demands. It can support PD profile from 65W to charge the laptop with build-in 150W GaN PSU.
- Upstream: USB-C 10G data w/ max 65W charger.
- HDMI 2.0 output, it can support resolution up to 4K60Hz.
- Downstream: USB-C 10G data x1 w/ max. 15W charger, USB-A 10G data w/ BC 1.2, 7.5W.

DUG7390



140W GaN Dock

- The New 140W GaN Charger dock is designed for extra connectivity demands. It can support PD profile from 140W to charge the laptop with build-in 150W GaN PSU.
- Upstream: USB-C 10G data w/ max 140W charger.
- HDMI 2.0 output, it can support resolution up to 4K60.
- Supports LAN (1GbE).
- Downstream: USB-C 10G data x1 w/ max. 15W charger, USB-A 10G data x2 w/ BC 1.2, 7.5W.

NDW6000



Wireless Display Adapter

- Wirelessly mirroring or extending PC screen to external display up to 1080p video resolution.
- Driverless, plug-n-play.
- Compatible with Windows, Android, Chrome, MacOS, iOS.
- Compatible with all PC, laptop, tablet, smart phone with DP_ALT Type-C supported Transmitter NDW6010 has USB-C connected to PC with USB power.
- Receiver NDW6020 has HDMI connection to TV and needs 5V USB-A power.
- P2P technology ensures interference-free, reliable display links.

ANC1261



USB3 Dual HDMI Adapter

- Add-on display device through a single USB-C / USB-A cable.
- 2x HDMI2.0 ports.
- Supports up to dual 4K60 video output.

HUV6602



USB3 Hub Extender with Dual Host and Dual 4K60 Display

- Incorporate HDBaseT USB3 technology.
- Support USB isochronous and bulk transfer mode.
- USB3.0 5Gbps bi-directional transmission over the CAT5/6/7 cable up to 100m.
- Host-side HUV6702 supports dual PC host switch via remote button cable.
- Device-Side HUV6802 supports 1x USB-C, 2x USB-A, 1x LAN, 1Audio combo, 2x HDMI 4K60.
- Compatible with all USB devices.

HUV6300



USB-C BYOD Extender

- Single-cable BYOD connection.
- Quick connections. no Additional Drivers.
- Host-Side HUV6301 supports Host PC PD charging up to PD90W.
- Device-Side supports HUV6302 connect to up to 4K60 conference TV.

HUV6601



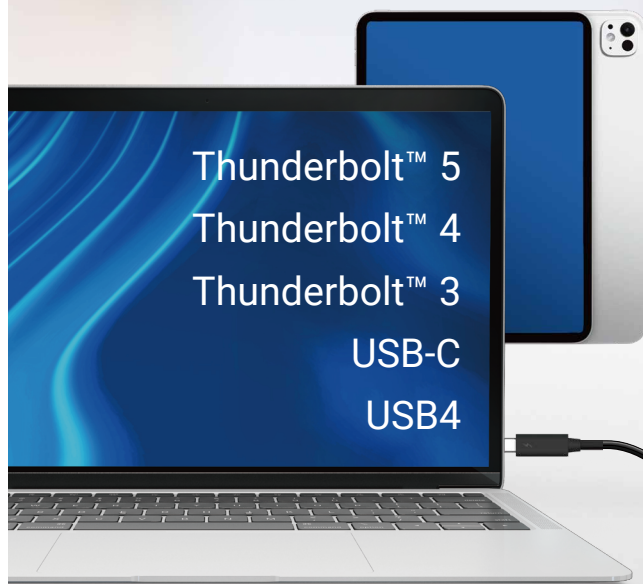
USB3 PD dongle Extender

- Incorporate HDBaseT USB3 technology.
- Support USB isochronous and bulk transfer mode.
- USB3.1 5Gbps bidirectional transmission over the CAT5/6 cable up to 100m Host-Side HUV6701 supports USB bus power and Self-power.
- Host-Side HUV6701 supports Host PC PD charging up to PD100W Device-Side supports USB device PD charging to to PD45W Compatible with all USB devices.

THUNDERBOLT™

Thunderbolt™ 5 with
Advanced Dynamic Bandwidth Allocation

Delivers up to 120Gbps with dynamic bandwidth scaling. Supports 8K resolution, multiple displays, and VR / AR with low latency and smooth performance. Ideal for high-speed data transfer and simultaneous high-resolution output.



Compatible
with all
LAPTOPS & TABLETS







Thunderbolt™ Share

Thunderbolt™ Share for Windows is a software solution enabling PC-to-PC experiences using Thunderbolt™ technology and is supported on all Windows Thunderbolt™ 4 or Thunderbolt™ 5 enabled PCs.


Note that Thunderbolt™ Share is included as a feature on select new PCs or Thunderbolt™ accessories and while the software can be installed on any system meeting HW / SW requirements, at least one connected PC or Thunderbolt™ accessory must be Thunderbolt™ Share licensed by the manufacturer.



Fast multi-PC access for sharing screen / monitor at up to 60 fps, keyboard, mouse, and storage.



Sync folders for drag-and-drop files between PCs with the speed of Thunderbolt™.



Quickly transfer from and old computer to a new one.

Real-world Application Examples

Scenario	Thunderbolt™ 4	Thunderbolt™ 5
Single 8K Display + Data Transfer	Insufficient bandwidth, likely stuttering	Handles easily, stable high-quality visuals
Multi-display	Bandwidth contention	Dynamic allocation, both perform well
High-speed External SSD	-	
VR Headset (High video output)	Visual stutter	Maintains stable high-frequency video transfer

Thunderbolt™ 5 Advantages Summary

- Dynamic Bandwidth Allocation (Bandwidth Boost)
 1. Base Bandwidth: 80Gbps (40Gbps + 40Gbps in each direction).
 2. Boost Mode: When high video output is needed, the transmission end can boost up to 120Gbps, while the return bandwidth drops to 40Gbps.
- Supports high-resolution output needs: Stable 8K, multi-display, VR / AR device support without stuttering.
- No sacrifice to data transfer efficiency: Boosted visual output without cutting data transmission speeds.
- Better suited for hybrid work/entertainment scenarios: For example, simultaneously connecting high-quality displays and reading/writing from external drives.

USB3, USB4, Thunderbolt™ 4, Thunderbolt™ 5 Comparison

Feature	USB3.2 Gen2	USB4	Thunderbolt™ 4	Thunderbolt™ 5
Max Bandwidth	10Gbps	40Gbps	40Gbps	80Gbps (up to 120 Gbps burst)
Bandwidth Boost	-	-	-	Yes
Video Support	-	1 display (4K60 min)	DisplayPort 1.4 2 displays (2x 4K60 or 1x 8K30)	DisplayPort 2.1 DSC1.2 3 displays (2x 8K60 or 3x 4K144)
PCIe Tunneling	-	Optional (16Gbps)	-	4x PCIe Gen4x4 (64Gbps)
Cable Length (Full Speed)	1m	~0.8m (passive), longer varies	2m (with certified cables)	1m (with certified cables)
Compatibility	USB3.1/3.0/2.0	USB 3 DisplayPort Thunderbolt™ 3	USB4 USB 3 DP Thunderbolt™ 3	USB4 USB 3 Thunderbolt™ 3 / 4 DP2.1
Daisy-Chaining	No	Yes	Yes	Yes
Max Power (PD)	100W, PD3.0	100W, PD3.0	100W, PD3.0	240W, PD3.1

DBF7050



Thunderbolt™ 5 SSD Dock

- Thunderbolt™ 5 upstream port delivers up to 140W for laptop power.
- Three Thunderbolt 5™ / USB-C DFP ports deliver up to 120Gbps, the front one supports PD60W for Thunderbolt™ share, and the rear two support PD15W.
- Supports one M.2 PCIe Gen 4×4 NVMe SSD up to 8 GB/s.
- Supports three 4K144 displays and two 8K60 display.
- Perfectly compatible with USB4, USB4 80, Thunderbolt™ 3 and 4.
- Built-in SD card reader and 2.5Gbe Ethernet enhance flexibility.

DBF7052



Thunderbolt™ 5 Full Dock

- Thunderbolt™ 5 delivers up to 140W for laptop power.
- Three Thunderbolt 5™ / USB-C DFP ports deliver up to 120 Gbps, the front one supports PD60W for Thunderbolt™ share, and the rear two support PD15W.
- Supports three 4K-resolution displays and two 8K-resolution displays for content extension.
- Perfectly compatible with USB4, USB4 80, Thunderbolt™ 3 and 4.
- Durable and sturdy aluminum casing design.

DBF7505



Thunderbolt™ 5 Dual HDMI Dock

- Thunderbolt™ 5 upstream port delivers up to 140W for laptop power.
- One Thunderbolt™ 5 downstream port and support PD30W.
- Dual HDMI2.1 up to 8K60.
- Supports three 4K144 displays and two 8K60 display.
- Built-in SD card reader and 2.5Gbe Ethernet enhance flexibility.

DBD1330



Thunderbolt™ 4 Dock Pro

- Thunderbolt™ 4 upstream port delivers up to 100W for laptop power.
- One HDMI2.1 video output port.
- Supports one 8K30 and dual 4K60 displays.
- Two Thunderbolt™ 4 downstream ports PD15W.

DBD1335



Thunderbolt™ 4 Dock Pro

- Thunderbolt™ 4 upstream port delivers up to 100W for laptop power.
- One HDMI2.1 video output port.
- Supports one 8K30 and dual 4K60 displays.
- Two Thunderbolt™ 4 downstream ports PD15W.
- Built-in SD card reader and 2.5Gbe Ethernet enhance flexibility.
- Lightweight casting design enhances mobility.

DBD1337



Thunderbolt™ 4 Dock Pro 2C2A

- Thunderbolt™ 4 upstream port delivers up to 100W for laptop power.
- One HDMI2.1 video output port.
- Supports one 8K30 and dual 4K60 displays.
- Two Thunderbolt™ 4 downstream ports PD15W.
- Built-in 2.5Gbe Ethernet enhance networking stability.
- The audio combo jack to headphone for conferencing or video-watching applications.

DBD1338



Thunderbolt™ 4 Dock Pro 2C2A

- Thunderbolt™ 4 upstream port delivers up to 100W for laptop power.
- One HDMI2.1 video output port.
- Supports one 8K30 and dual 4K60 displays.
- Two Thunderbolt™ 4 downstream ports PD15W.
- 1x SD4.0 card slot.
- The audio combo jack to headphone for conferencing or video-watching applications.

DBD1100



Thunderbolt™ 4 Full Dock

- Thunderbolt™ 4 upstream port delivers up to 90W for laptop power.
- Supports one 8K30 and dual 4K60 displays.
- Three Thunderbolt™ 4 downstream ports PD15W.
- Built-in SD card reader and 1Gb Ethernet enhance flexibility.
- Lightweight casting design enhances mobility.
- Conveniently connect USB devices with four legacy USB-A ports.

DBD1105



Thunderbolt™ 4 Full Dock

- Thunderbolt™ 4 upstream port delivers up to 90W for laptop power.
- Supports one 8K30 and dual 4K60 displays.
- Three Thunderbolt™ 4 downstream ports PD15W.

DBD1010



Thunderbolt™ 4 Compact Dock

- Thunderbolt™ 4 upstream port delivers up to 90W for laptop power.
- Supports one 8K30 and dual 4K60 displays.
- Three Thunderbolt™ 4 downstream ports PD15W.

VSC7010



Thunderbolt™ 3 to Dual HDMI 2.1 Adapter

- Experiencing dual display with the maximum resolution in 8K60 or dual 4K120.
- High quality video display through 40Gbps high bandwidth from the laptop.
- Bus-powered by the laptop with no need any bulky power adapter.
- Plug-n-play design with no software installation required.
- Compact and simple design easy to carry and use.
- Fine texture with delicate aluminum case for the texture appearance.

USB4

Multi-protocol Integration with High-speed Connectivity

Supports USB, DisplayPort, PCIe, and Thunderbolt™ 3 through one connection. Reaches up to 40Gbps for fast storage, media editing, and 4K/8K output. A powerful and cost-efficient choice for modern workflows.



DU47620



True USB4 MST Dock

- The USB 4 / USB-C upstream port offering up to 40Gbps data transfer speed and supplied 96W of laptop power.
- One USB 4 / USB-C downstream ports (DP / USB / PCIe tunneling).
- Conveniently connect USB devices with 2× USB-C 10G, 1xUSB-A 10G, 2xUSB-A 5G and 2× USB-A 2.0 ports.
- DP2.1 MST offers up to 8K resolution when extending Four displays on 1x USB4 DFP, 2x DisplayPort2.1 and 1x HDMI2.1 connectivity.
- Features LAN and audio ports for wired internet and headset connections.

DU47650



True USB4 Dock

- The USB 4 / USB-C upstream port offering up to 40Gbps data transfer speed and supplied 96W of laptop power.
- One USB 4 / USB-C downstream ports (DP / USB / PCIe tunneling).
- Conveniently connect USB devices with 1× USB-C 20G, 2xUSB-C 10G, 3xUSB-A 5G and 2× USB-A 2.0 ports.
- Supports single 8K60 resolution and two 4K144 when extending two displays on 1x USB4 DFP, 2x HDMI2.1 connectivity.
- Features LAN and audio ports for wired internet and headset connections.

VS41000



USB4 Compact Dock

- USB4 40Gbps tethered cable with PD pass-through up to 85W.
- 2x USB-A 10G and 1x USB-C 10G to connect more USB peripherals.
- 1x HDMI2.1 and 1x DP1.4 support resolutions up to single 8K30 / 4K120 or dual 4K60.
- Features LAN and audio ports for wired internet and headset connections.
- Supports both bus-powered and self-powered modes.

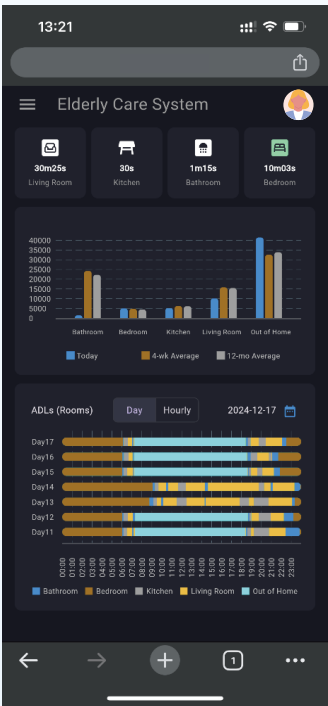
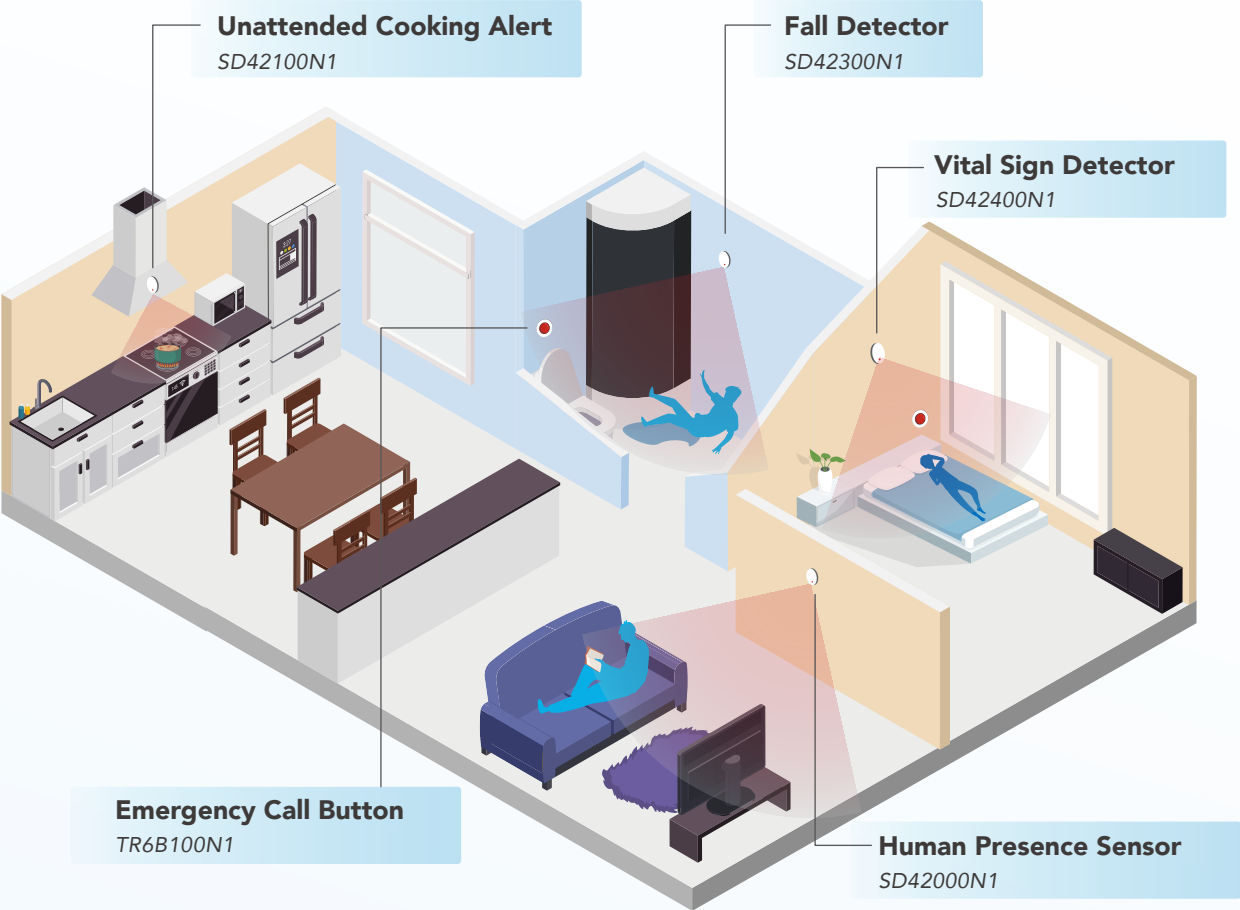
A photograph of an elderly couple standing outdoors. The woman, on the left, has short white hair and is wearing a white jacket over a grey top. The man, on the right, has grey hair, a beard, and glasses, and is wearing a light-colored sweater. They are both smiling and looking at each other. In the background, there are green trees and a white house.

ELDERLY CARE

AI + IoT Sensors for Supporting Home Care

AI + IoT sensors can support home care by detecting potential fall risks and unusual daily activities (ADLs). This data-driven approach allows for early intervention through active ADLs monitoring, helping to achieve safe and healthy aging.

Activities of Daily Livings (ADLs) Sensors



Build Activities of Daily Livings (ADLs) dashboards with human presence sensors

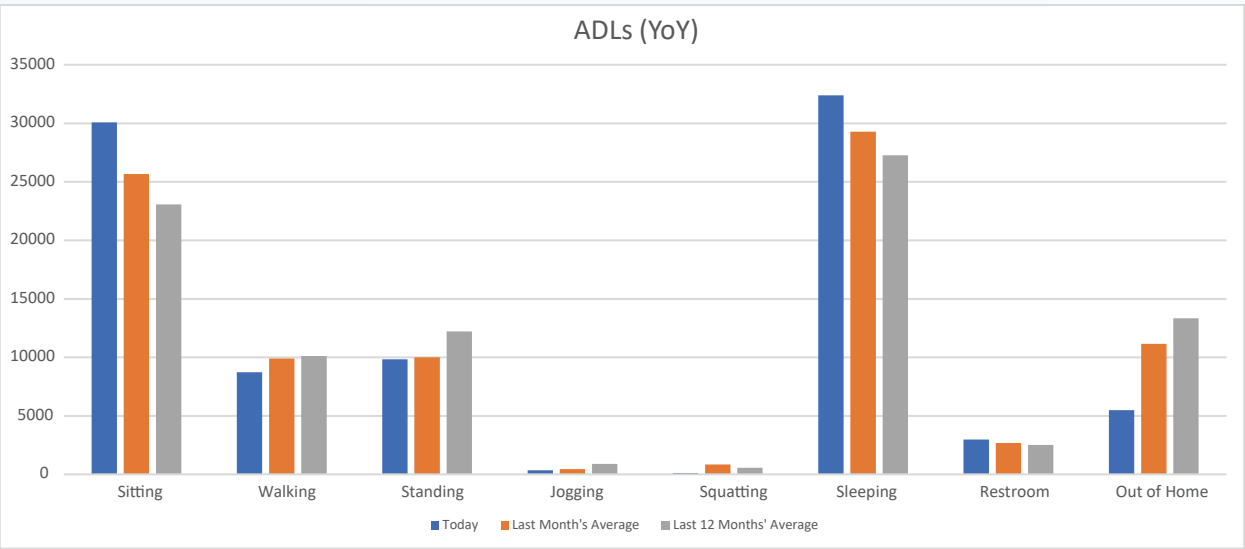
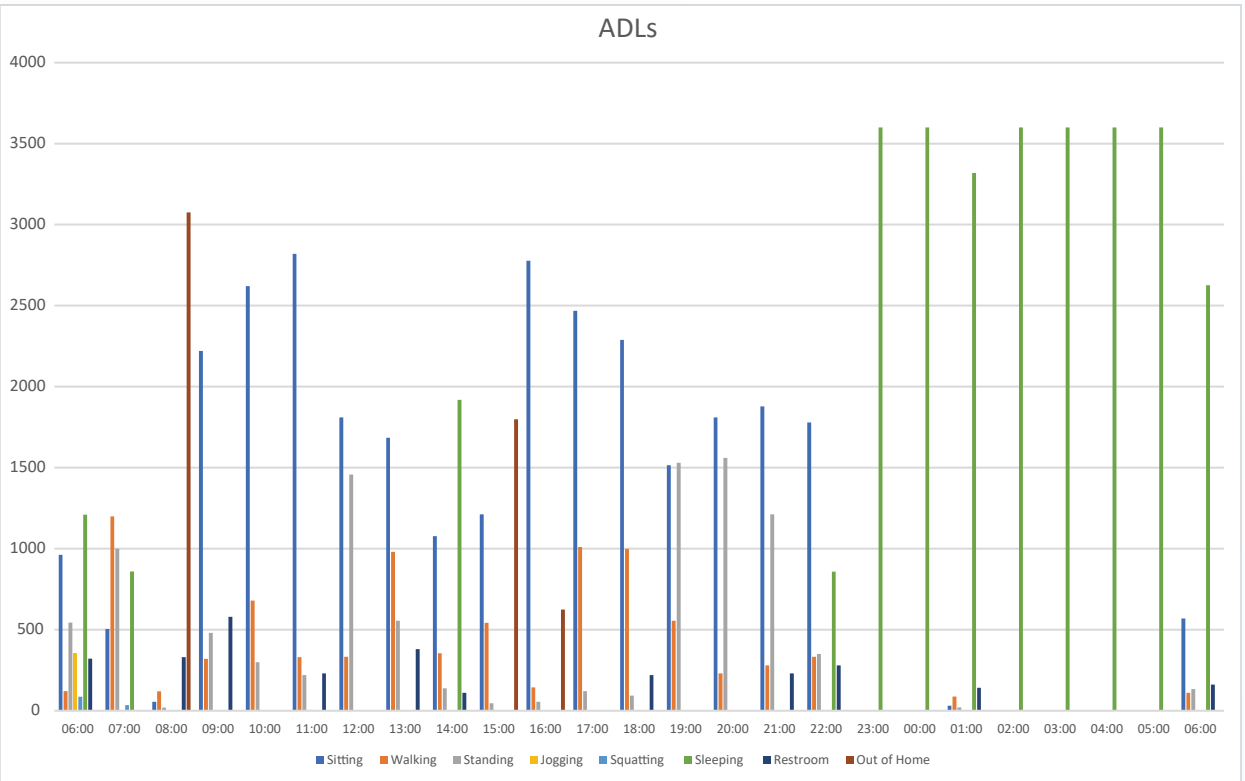
- Stationary human detection
- Pet immunity (big & small)



Build Activities of Daily Livings (ADLs) dashboards with posture recognition sensors



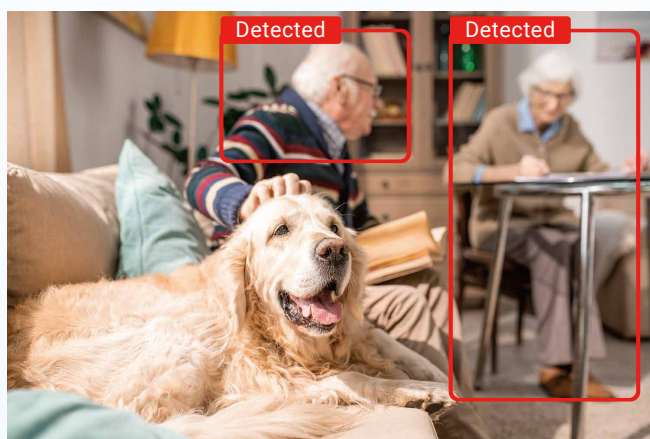
Install Posture Recognition Sensors in every room and notice changes in your behavior. With multiple sensors deployed, users can view daily posture durations, compare them with previous activity records, and understand the changes in the proportion of different postures in their daily life.



SD42000N1 Human Presence Sensor

The SD42000N1 Human Presence Sensor is designed for ultra-low fault alert applications. With the improved AI ISP, users can more accurately detect whether a room is occupied or vacant. The SD42000N1 can provide home activities for the elderly, making up for the lack of home activity data in the healthy aging plan.

- Edge AI (no image output).
- Low false alarm rate (< 3%).
- Stationary human detection.
- Pet immunity (big & small).
- Fast response.
 - Detected human presence < 1S
 - Detected no human presence < 3S



Stationary Person Detection

Utilizes advanced edge computing AI to identify stationary individuals.

Pet False Alarm Prevention

Intelligent machine learning algorithms mitigate false alarms caused by pets like cats and dogs.

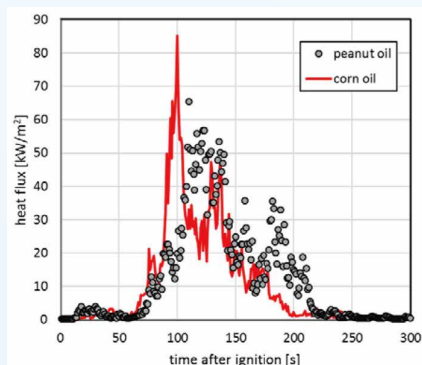
Human Presence Sensor	SD42000N1	PIR	mmWave 24GHz	mmWave 60GHz	Thermopile	Bolometer
High Accuracy	✓	✗	⬆	✓	⬆	✓
Low False Alarm Rate	✓	✗	⬆	⬆	⬆	⬆
Stationary Human Detection	✓	✗	⬆	⬆	⬆	✓
Pet Friendly	✓	✗	⬆	✓	✗	✓
Response Time (presence)	✓	✓	✓	✓	✓	✓
Response Time (no presence)	✓	✗	✓	✓	⬆	⬆
Low Cost	⬆	✓	✓	⬆	⬆	✗
Larger Detection Ranges	⬆	✓	✗	✗	✗	✓

SD42100N1 Unattended Cooking Alert

The U.S. Fire Administration has reported in the past that approximately half of all home fires start in the kitchen. The #1 reason is unattended cooking.

The SD42100N1 is the solution for FIR Array, collaborate with human presence sensor SD42000N1 to perform the edge AI's detection and Stove temperature monitoring. The SD421 supports Wi-Fi or Matter communication protocols and can connect to an application platform, allowing users to receive information remotely.

- When the SD421 detects a temperature of 250°C, it emits a warning sound (1K Hz) continuously for 15 seconds.
- When the SD421 detects a temperature of 320°C, it emits an alarm sound (3.25K Hz) that cannot be stopped (it must be unplugged to terminate the alarm).

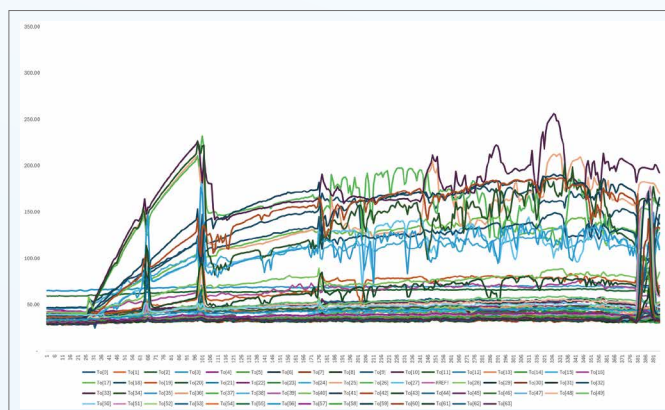
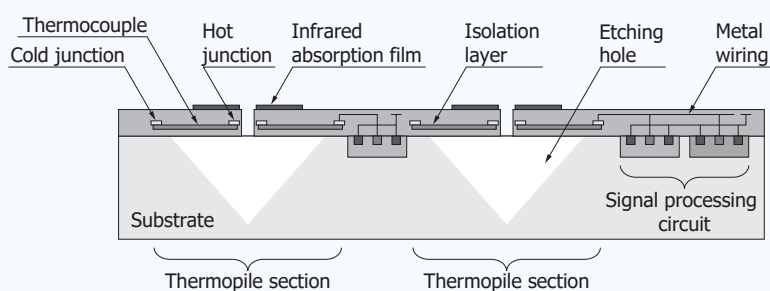
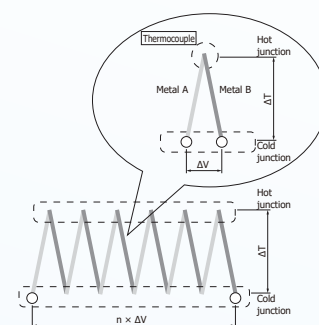


(a) HF#2

Application Diagram

Installation location :

- Installation under cooker hood (Recommended)
- Wall mounting (Option)



SD42300N1 Fall Detector

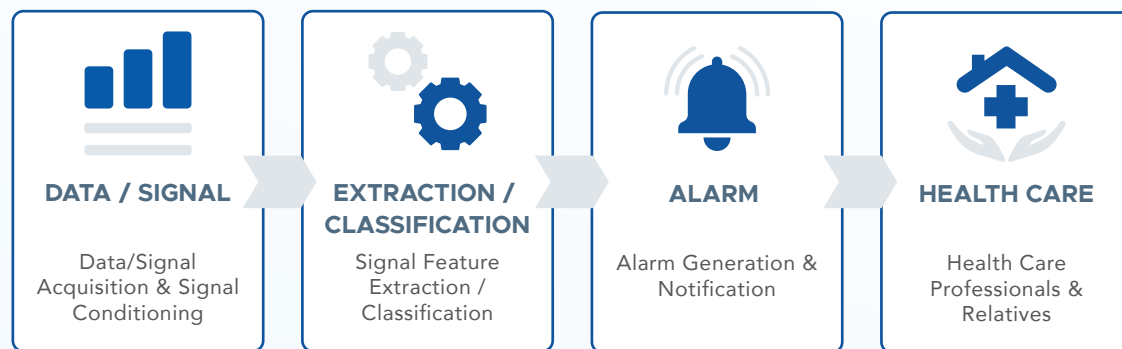
Edge AI Solution

AI Models + EdgeAI SOC + IoT

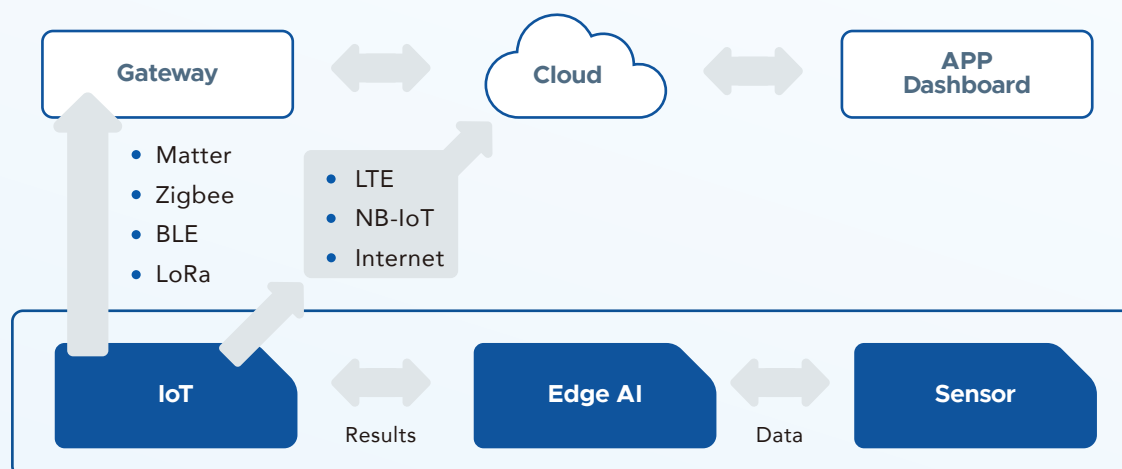
- TinyML AI Training Models.
- Edge AI SOC w/Embedded OS.
- High Accuracy Rate.
- Low False Alarm Rate.
- IoT Communication Capabilities : Connect to an application platform to provide customized features based on user needs.



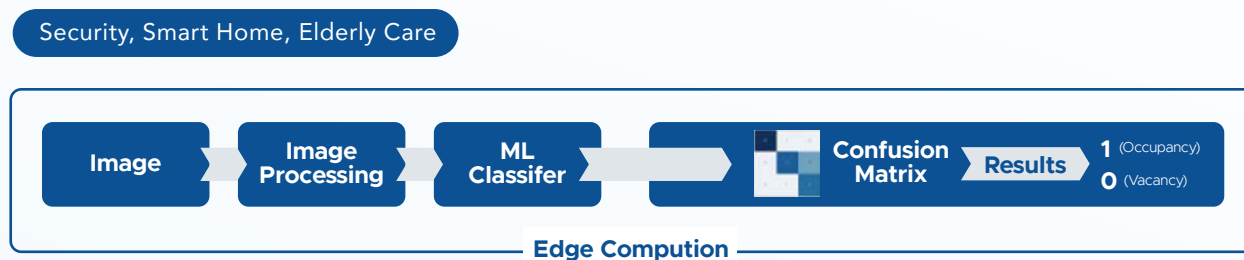
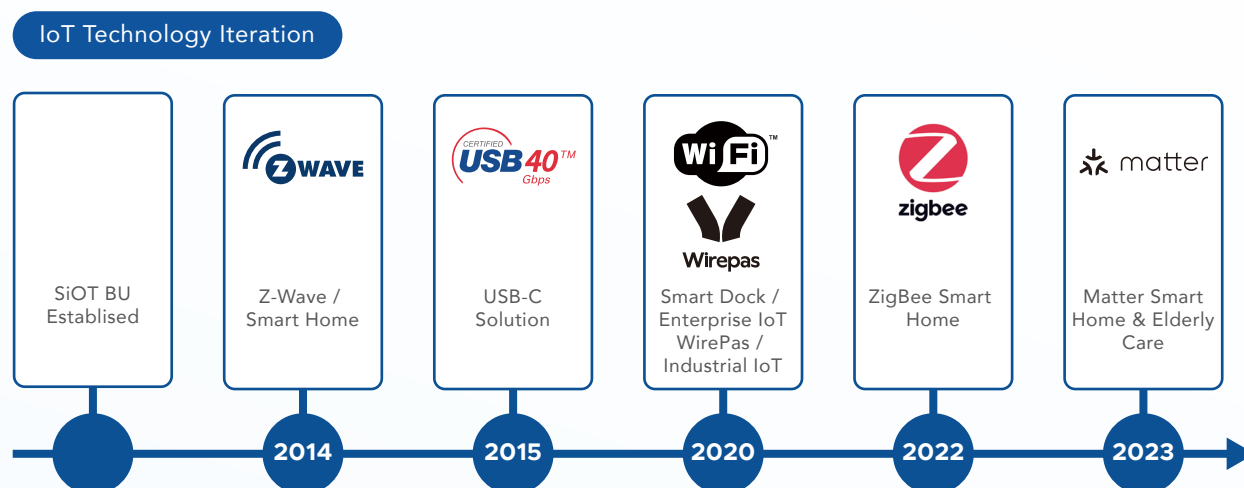
Edge AI + IoT



Works on Multiple Ecosystems



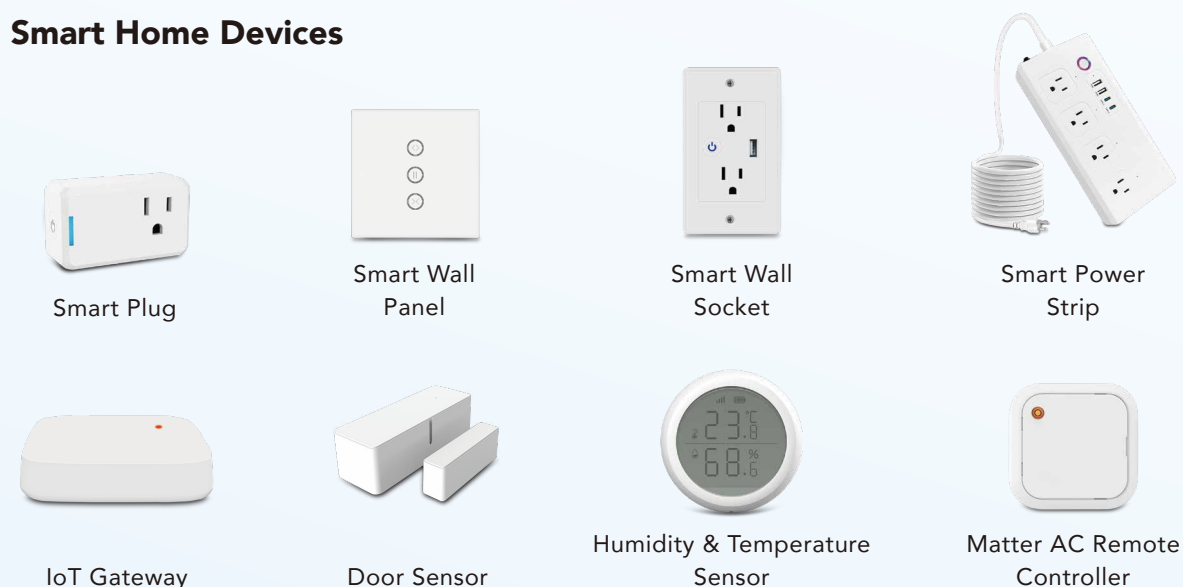
IoT Capabilities & Smart Home Products



IoT Capabilities

- Matter
- Wi-Fi
- RS-485 / Modbus
- Thread
- Zigbee
- Dry / Wet Contacts

Smart Home Devices



PRODUCTS LIST

Comprehensive Solutions Across Every Category

Explore a full range of connectivity and smart computing products designed to meet diverse application needs with performance and reliability.

Explore a full range of connectivity and smart computing products designed to meet diverse application needs with performance and reliability.



PRODUCTS LIST

SMART MANAGEMENT



DUD8380



DUD8390



DBD8400

Description	USB-C DisplayLink Smart Dock	USB-C DP1.4 MST Smart Dock	Thunderbolt™ 4 Smart Dock
Remote IT management	Cloud / Server to LAN	Cloud / Server to LAN	Cloud / Server to LAN
Remote firmware update	Yes	Yes	Yes
Video output port	2x HDMI2.0, 2x DP1.2	1x HDMI2.1, 2x DP1.4	2x DP
Max. Displays	2x Displays	3x Displays	2x Displays
Max. Resolution	2x 4K60	2x 4K60 / 3x 4K30	1x8K30 / 2x 4K60
USB-C Upstream	1x USB-C 10G	1x USB-C 10G	1x TBT4
USB Downstream	2x USB-C 10G (1x PD20W) 3x USB-A 10G (1xBC1.2) 2x USB-A 5G	2x USB-C 10G 2x USB-A 10G (1xBC1.2) 2x USB-A 5G	1x TBT4 1x USB-C 10G 3x USB-A 10G (1xBC1.2) 1x USB-A 2.0
Audio in/out	1x	1x	1x
LAN	1GbE	1GbE	1GbE
PD	PD96W	PD96W	PD90W

CONFERENCE & HYBRID WORKING



DUD7440



VSD5340



DMB7241

Description	Travel Conference Mate	Speak Phone Dock	Booking Dock
USB Upstream	-	USB-C 10G Cable	USB-C 10G
USB Downstream	1x USB-A 5G	1x USB-A 10G 2x USB-C 10G	3x USB-C 10G 1x USB-C 10G, PD20W
HDBT-USB3 Port	-	-	1x RJ45
Max. Displays	1x HDMI	1x HDMI 2.0	1x DP1.4 1x HDMI 2.0
Max. Resolution	1x 4K60	1x 4K60	1x 4K60
Power In	USB-C Cable	USB-C Cable	1x DC Jack



DUG7380



DUG7390

Description	75W GaN Dock	140W GaN Dock
Max. Resolution	4K60	4K60
Legacy Video Port	1x HDMI	1x HDMI
USB Upstream	USB-C 10G	USB-C 10G
USB Downstream	1x USB-C 10G 1x USB-A 10G	1x USB-C 10G 2x USB-A 10G
LAN	-	1x 1GbE
PD	PD75W	PD140W
AC In	IEC60320 C8	IEC60320 C8

CONFERENCE & HYBRID WORKING



NDW6000



ANC1261

Description	Wireless Display P2P Dongle	USB3 Dual HDMI Adapter
Max. Resolution	1080p	2x 4K60
Max. Displays	-	2x Displays
Transmitter (connected to PC)	1x USB-C(DP_ALT and 5V bus-power)	-
Receiver (connected to TV)	1x USB-A 5V power in 1x HDMI port to TV	-
Driver	Driverless, Plug & Play	-
Legacy Video Port	-	2x HDMI
USB Upstream	-	USB-C 10G
Power mode	Bus-power	Bus-power



HUV6601 USB3 PD dongle Extender

Description	Host-side HUV6701	Device-side HUV6801
USB Upstream	1x USB-C 5G	-
USB Downstream	-	1x USB-C 5G
HDBT-USB3 Port	1x RJ45	1x RJ45
Power Mode	Bus-power / Self-power	Self-power
PD	PD100W	PD45W
Power In	1x USB-C	1x USB-C



HUV6602 USB3.0 Hub Extender with Dual Host and Dual 4K60 Display

Description	Host-side HUV6702	Device-side HUV6802
USB Upstream	2x USB-C	-
USB Downstream	1x USB-A 5G	1x USB-C 5G 2x USB-A 5G
HDBT-USB3 Port	1x RJ45	1x RJ45
Max. Displays	-	2x HDMI
Max. Resolution	-	2x 4K60
Power In	1x DC Jack	1x DC Jack



HUV6300 USB-C BYOD Extender

Description	Host-side HUV6301	Device-side HUV6302
USB Upstream	USB-C	-
USB Downstream	-	USB-C
HDBT-USB3 Port	1x RJ45	1x RJ45
Power Mode	Bus-power / Self-power	Self-power
PD	90W	15W
Power In	PD100W	PD30W

PRODUCTS LIST

THUNDERBOLT™



DBF7050



DBF7052

Description	Thunderbolt™ 5 SSD Dock	Thunderbolt™ 5 Full Dock
Max. Displays	2× 8K60 3× 4K144	2× 8K60 3× 4K144
Thunderbolt™ Upstream	1× TBT5	1× TBT5
Thunderbolt™ Downstream	3× TBT5	3× TBT5
USB Downstream	3× USB-A 10G 1× USB-A 5G	3× USB-A 10G 1× USB-A 5G
SD Card Reader	1× SD4.0	1× SD4.0
LAN	1× 2.5GbE	1× 2.5GbE
Audio in/out	1 ×	1×
Internal M.2	1x M.2 for SSD 2280	-
PD	PD140W	PD140W



DBF7505

Description	Thunderbolt™ 5 Dual HDMI Dock
Max. Displays	3x Displays
Legacy Video Port	2x HDMI 2.1
Thunderbolt™ Upstream	1x TBT5
Thunderbolt™ Downstream	1x TBT5
USB Downstream	1x USB-A 10G 2x USB-A 5G 3x USB-C 5G 2x USB-C 10G
SD Card Reader	1x SD3.0
LAN	1x 2.5GbE
Audio In/out	1x
Internal M.2	-
PD	PD140W



DBD1330



DBD1335

Description	Thunderbolt™ 4 Dock Pro	Thunderbolt™ 4 Dock Pro
Max. Displays	1× 8K30 2× 4K60	1× 8K30 2× 4K60
Legacy Video Port	1× HDMI	1× HDMI
Thunderbolt™ Upstream	1× TBT4	1× TBT4
Thunderbolt™ Downstream	2x TBT4	2x TBT4
USB Downstream	4× USB-A 10G (1xBC1.2)	4× USB-A 10G (1xBC1.2)
SD Card Reader	1x SD4.0	1x SD4.0
LAN	1× 2.5GbE	1× 2.5GbE
Audio in/out	1×	1×
PD	PD96W	PD96W

PRODUCTS LIST

THUNDERBOLT™



DBD1337



DBD1338

Description	Thunderbolt™ 4 Dock Pro 2C2A	Thunderbolt™ 4 Dock Pro 2C2A
Max. Displays	1× 8K30 2× 4K60	1× 8K30 2× 4K60
Legacy Video Port	1× HDMI2.1	1× HDMI2.1
Thunderbolt™ Upstream	1× TBT4	1× TBT4
Thunderbolt™ Downstream	2× TBT4	2× TBT4
USB Downstream	2× USB-A 10G 2× USB-C 10G	2× USB-A 10G 2× USB-C 10G
SD Card Reader	-	1× SD4.0
LAN	1× 2.5GbE	1× 2.5GbE
Audio in/out	1×	1×
Audio in/out	1×	1×
PD	PD96W	PD96W



DBD1100



DBD1105



DBD1010

Description	Thunderbolt™ 4 Full Dock	Thunderbolt™ 4 Full Dock	Thunderbolt™ 4 Compact Dock
Max. Displays	1× 8K30 2× 4K60	1× 8K30 2× 4K60	1× 8K30 2× 4K60
Thunderbolt™ Upstream	1× TBT4	1× TBT4	1× TBT4
Thunderbolt™ Downstream	3× TBT4	3× TBT4	3× TBT4
USB Downstream	3× USB-A 10G(1×BC1.2) 1× USB-A 2.0	3× USB-A 10G(1×BC1.2) 1× USB-A 2.0	1× USB-A 10G (BC1.2)
SD Card Reader	1× SD4.0	1× SD4.0	-
LAN	1× 1GbE	1× 1GbE	1× 1GbE
Audio in/out	1×	1×	1×
PD	PD90W	PD90W	PD85W



VSC7010

Description	Thunderbolt™ 3 to Dual HDMI 2.1 Adapter
Max. Displays	2× 4K120
Legacy Video Port	2× HDMI2.1
Thunderbolt™ Upstream	1× TBT3
Power mode	Bus-power

PRODUCTS LIST

USB4



DU47620



DU47650



VS41000

Description	True USB4 MST Dock	True USB4 Dock	USB4 Compact Dock
Max. Displays	3x Displays	2x Displays	2x Displays
Legacy Video Port	2x DP 2.1 1x HDMI 2.1	2x HDMI 2.1	1x HDMI2.1 1x DP1.4
USB4 Upstream	USB4 40Gbps	USB4 40Gbps	USB4 40Gbps
USB4 Downstream	USB4 40Gbps	USB4 40Gbps	-
USB Downstream	2x USB-C 10G 1x USB-A 10G 1x USB-A 5G 1x USB-A 2.0	2x USB-C 20G 2x USB-C 10G 2x USB-A 5G 1x USB-A 2.0	1x USB-C 10G(USB/PD in) 2x USB-A 10G
USB4 Downstream	USB4 40Gbps	USB4 40Gbps	-
Audio In/out	1x	1x	1x
LAN	1GpE	1GpE	1GpE
Power Mode	Bus-Power / Self-Power	Bus-Power / Self-Power	Bus-Power / Self-Power
PD	PD96W	PD96W	PD85W

MST



VSD5480






VSD5481

Description	USB-C 10-in-1 Mini Dock	USB-C 10-in-1 Mini Dock
Max. Displays	2x Displays	2x Displays
Legacy Video Port	2x DP1.4	2x DP1.4
Max. Resolution	2x 4K60	2x 4K60
USB Upstream	USB-C 5G	USB-C 5G
USB Downstream	5x USB-A 5G	5x USB-A 5G
Card Reader	1x SD4.0	1x SD4.0
LAN	1GbE	1GbE
Power mode	Bus-power / Self-power	Bus-power / Self-power
PD	85W	85W
Power in	1x USB-C	1x USB-C
USB-C Cable	30cm	100cm

PRODUCTS LIST

MST

			
	DUD2070S	DUD2070R	DUD2170R
Description	USB-C MST 3x Display Dock	USB-C MST 3x Display Dock	USB-C MST 3x Display Dock
Max. Displays	3x Displays	3x Displays	3x Displays
Legacy Video Port	2x DP1.4 1x HDMI2.0	2x DP1.4 1x HDMI2.1	2x DP1.4 1x HDMI2.1
Max. Resolution	2x 4K60 / 3x 4K30	2x 4K60 / 3x 4K30	2x 4K60 / 3x 4K30
USB Upstream	USB-C 10G	USB-C 10G	USB-C 10G
USB Downstream	1x USB-C 10G 3x USB-A 10G (1xBC1.2)	2x USB-C 10G (1xBC1.2) 2x USB-A 10G (1xBC1.2) 2x USB-A 2.0	2x USB-C 10G (1xBC1.2) 2x USB-A 10G (1xBC1.2) 2x USB-A 2.0
Audio in/out	1x	1x	1x
LAN	1GbE	1GbE	1GbE
PD	PD85W	PD96W	PD96W



DGD1001

Description	USB-C MST 3x Display Dock
Max. Displays	3x Displays
Legacy Video Port	2x DP1.4 2x HDMI2.0
Max. Resolution	2x 4K60 / 3x 4K30
USB Upstream	USB-C 10G
USB Downstream	1x USB-C 10G 1x USB-C MFD (4K60/USB10G) 2x USB-A 10G 2x USB-A 2.0
Audio in/out	1x
LAN	1GbE
PD	PD60W

DISPLAYLINK



AVP7320

Description	PCIe 4x HDMI 4K card
Max. Displays	4x Displays
Max. Resolution	4x 4K60
Legacy Video Port	4x HDMI
Upstream	PCIe
Power mode	PCIe power

DISPLAYLINK



DUD7480

Description	USB-C 8 in 1 Universal Dual Display Multiport Hub
Max. Displays	2x Displays
Max. Resolution	2x 1080p
Legacy Video Port	2x HDMI 1.4
USB Upstream	USB-C 5G
USB Downstream	2x USB-C 5G 1x USB-A 5G 1x USB-A 2.0
LAN	1GbE
Audio In/out	-
PD	PD85W



DUD7490

Description	USB-C Universal Dual Head Dock
Max. Displays	2x Displays
Max. Resolution	2x 1080p
Legacy Video Port	2x HDMI 1.4
USB Upstream	USB-C 10G
USB Downstream	2x USB-C 10G 2x USB-A 2.0
LAN	1GbE
Audio In/out	1x
PD	PD96W



DUD3501

Description	Triple 4K Display Dock
Max. Displays	3x Displays
Max. Resolution	3x 4K60
Legacy Video Port	3x DP/HDMI
USB Upstream	USB-C 10G
USB Downstream	1x USB-C 10G 4x USB-A 5G
SD Card Reader	1x SD4.0
LAN	1GbE
Audio in/out	1x /1x
PD	PD96W



DUD3511

Description	Triple 4K Display Dock
Max. Displays	3x Displays
Max. Resolution	3x 4K60
Legacy Video Port	3x DP/HDMI
USB Upstream	USB-C 10G
USB Downstream	1x USB-C 10G 4x USB-A 5G
SD Card Reader	-
LAN	1GbE
Audio in/out	1x /1x
PD	PD96W



DUD3521

Description	Dual 4K Display Dock
Max. Displays	2x Displays
Max. Resolution	2x 4K60
Legacy Video Port	2x DP/HDMI
USB Upstream	USB-C 10G
USB Downstream	1x USB-C 10G (PD20W) 4x USB-A 5G
SD Card Reader	1x SD4.0
LAN	1GbE
Audio in/out	1x /1x
PD	PD96W



DUD3531

Description	Dual 4K Display Dock
Max. Displays	2x Displays
Max. Resolution	2x 4K60
Legacy Video Port	2x DP/HDMI
USB Upstream	USB-C 10G
USB Downstream	1x USB-C 10G (PD20W) 4x USB-A 5G (1x BC1.2)
SD Card Reader	-
LAN	1GbE
Audio in/out	1x /1x
PD	PD96W

PRODUCTS LIST

DISPLAYLINK



DUD3500

Description	Triple 4K Display Dock
Max. Displays	3x Displays
Max. Resolution	3x 4K60
Legacy Video Port	3x DP 3x HDMI
USB Upstream	USB-C 10G
USB Downstream	1x USB-C 10G 4x USB-A 5G
SD Card Reader	1x SD4.0
LAN	1GbE
Audio in/out	1x /1x
PD	PD96W



DUD3600

Description	Quad 2K Display Dock
Max. Displays	4x Displays
Max. Resolution	4x 2K60
Legacy Video Port	4x HDMI
USB Upstream	USB-C 5G
USB Downstream	1x USB-C 5G 4x USB-A 5G
SD Card Reader	1x SD4.0
LAN	1GbE
Audio in/out	1x /1x
PD	PD96W



DUD15X0

Description	Triple 4K Display Dock
Max. Displays	3x Displays
Max. Resolution	2x 4K60 1x 4K30
Legacy Video Port	2x DP 3x HDMI
USB Upstream	USB-B 5G
USB Downstream	1x USB-B 5G 5x USB-A 5G (1xBC1.2)
LAN	1GbE
Audio in/out	1x / 1x
PD	PD85W



DUD15Y0

Description	Dual 4K Display Dock
Max. Displays	2x Displays
Max. Resolution	2x 4K60
Legacy Video Port	2x DP 2x HDMI
USB Upstream	USB-B 5G
USB Downstream	1x USB-C 5G 5x USB-A 5G (1xBC1.2)
LAN	1GbE
Audio in/out	1x / 1x
PD	PD85W



DUD7200

Description	USB-C Universal 3x 4K Mini Dock
Max. Resolution	3x 4K60
Legacy Video Port	3x HDMI
USB Upstream	USB-C 10G
USB Downstream	2x USB-C 10G 4x USB-A 5G
LAN	1GbE
Audio in/out	1x
PD	PD85W
Power in	1x USB-C
Tethred cable	100cm



DUD7205

Description	USB-C Universal 2x 4K Mini Dock
Max. Resolution	2x 4K60
Legacy Video Port	2x HDMI
USB Upstream	USB-C 10G
USB Downstream	2x USB-C 10G 4x USB-A 5G
LAN	1GbE
Audio in/out	1x
PD	PD85W
Power in	1x USB-C
Tethred cable	100cm

PRODUCTS LIST

DISPLAYLINK



DUD7350

Description	USB-C Universal 3x 4K Mini Dock
Max. Displays	3x Displays
Max. Resolution	3x 4K60
Legacy Video Port	1x HDMI 2x DP
USB Upstream	USB-C 10G
USB Downstream	2x USB-C 10G 4x USB-A 5G
LAN	1GbE
Audio in/out	1x
PD	PD85W
Power in	1x USB-C
Tethered cable	100cm



DUD7355

Description	USB-C Universal 2x 4K Mini Dock
Max. Displays	2x Displays
Max. Resolution	2x 4K60
Legacy Video Port	2x DP
USB Upstream	USB-C 10G
USB Downstream	2x USB-C 10G 4x USB-A 5G
LAN	1GbE
Audio in/out	1x
PD	PD85W
Power in	1x USB-C
Tethered cable	100cm



DUD3561

Description	Dual 4K Display Dock
Max. Displays	2x Displays
Max. Resolution	2x 4K60
Legacy Video Port	2x DP/HDMI
USB Upstream	USB-C 10G
USB Downstream	4x USB-C 10G 2x USB-A 10G
SD Card Reader	1x SD4.0
LAN	2.5GbE
Audio in/out	1x /1x
PD	PD96W



DUD3571

Description	USB-C 14 in 1 Triple 4K Display Dock
Max. Displays	3x Displays
Max. Resolution	3x 4K60
Legacy Video Port	2x DP 1.2 3x HDMI 2.0
USB Upstream	USB-C 10G
USB Downstream	2x USB-C 10G 4x USB-A 5G
SD Card Reader	-
LAN	1GbE
Audio in/out	1x /1x
PD	PD96W



DU31260

Description	Dual 2K Display Dock
Max. Displays	2x Displays
Max. Resolution	2x 2K60
Legacy Video Port	2x HDMI
USB Upstream	USB-B 5G
USB Downstream	2x USB-A 5G (1xBC1.2) 4x USB-A 2.0
LAN	1GbE
Audio in/out	1x / 1x



DU3200

Description	Dual 2K Display Dock
Max. Displays	3x Displays
Max. Resolution	2x 2K60
Legacy Video Port	1x HDMI 1x DVI
USB Upstream	USB-B 5G
USB Downstream	2x USB-A 5G (1xBC1.2) 4x USB-A 2.0
LAN	1GbE
Audio in/out	1x / 1x

PRODUCTS LIST

DISPLAYLINK



DUD3400



DUD3950

Description	Triple 2K Display	USB-C 5x 4K Display Dock
Max. Displays	3x Displays	5x Displays
Max. Resolution	3x 2K60	5x 4K60
Legacy Video Port	3x HDMI	2x DP 1.4 3x HDMI 2.0
USB Upstream	USB-C 5G	USB-C 10G
USB Downstream	1x USB-C 5G 4x USB-A 5G	2x USB-C 10G 4x USB-A 5G
USB Downstream	1x USB-C 5G 4x USB-A 5G	2x USB-C 10G 4x USB-A 5G
SD Card Reader	1x SD4.0	-
LAN	1GbE	1GbE
Audio in/out	1x /1x	1x TRRS
PD	PD96W	PD96W



DUD2260



DUD7420

Description	USB-C Multi-Mount Dock	USB-C Universal Dual 4K Display Dock
Max. Displays	2x Displays	4x Displays
Max. Resolution	2x 2K60	2x 4K60
Legacy Video Port	2x HDMI	2x DP 1.4 2x HDMI 2.0
USB Upstream	USB-C 5G	USB-C 10G
USB Downstream	3x USB-A 5G (1xBC1.2)	3x USB-C 10G 1x USB-A 10G (1x BC1.2) 1x USB-A 5G
LAN	1GbE	1GbE
Audio in/out	1x	1x
PD	PD85W	PD96W

TRAVEL



DUD7170



DUD7180



DUD7190

Description	USB-C 9-in-1 Travel Dock	USB-C 10-in-1 Travel Dock	USB-C 11-in-1 Travel Dock
Max. Displays	1x Display	1x Display	2x Display
Max. Resolution	1x 4K60	1x 4K60	2x 4K60
Legacy Video Port	1x HDMI2.0	1x HDMI2.0	2x HDMI2.0
USB Upstream	USB-C 5G	USB-C 5G	USB-C 10G
USB Downstream	3x USB-A 5G	2x USB-C 10G 1x USB-A 10G 2x USB-A 5G	2x USB-C 10G 1x USB-A 10G 2x USB-A 5G
SD Card Reader	1x SD3.0 / 1x MicroSD	1x SD3.0 / 1x MicroSD	1x SD3.0 / 1x MicroSD
Audio in/out	1x	-	-
LAN	1GbE	1GbE	1GbE
Power mode	Bus-power / Self-power	Bus-power / Self-power	Bus-power / Self-power
PD	PD85W	PD85W	PD85W

PRODUCTS LIST

TRAVEL



DGD3000



VSD5251



DUD7220

Description	USB-C 5-in-1 WWCB Dock	USB-C 5-in-1 Travel Dock	USB-C 10-in-1 Travel Dock
Max. Displays	1x Display	1x Display	3x Display
Max. Resolution	1x 4K60	1x 4K60	2x 4K60 1x 4K30
Legacy Video Port	1x HDMI2.0	1x HDMI2.0	1x DP1.4 2x HDMI2.0
USB Upstream	USB-C 5G	USB-C 5G	USB-C 10G
USB Downstream	2x USB-A 5G	1x USB-A 5G 1x USB-C 5G	1x USB-C 10G 1x USB-C 10G 1x USB-A 10G 2x USB-A 5G
LAN	1GbE	1GbE	1GbE
Power mode	Bus-power / Self-power	Bus-power / Self-power	Bus-power / Self-power
PD	PD85W	PD85W	PD85W

ADAPTER



ANC1260



ANC1261

Description	USB-C 2x HDMI 4K Adapter W/PD	USB-C 2x HDMI 4K Adapter
Max. Displays	2x Displays	2x Displays
Max. Resolution	2x 4K60	2x 4K60
Legacy Video Port	2x HDMI	2x HDMI
USB Upstream	USB-C 10G	USB-C 10G
Power mode	Bus-power / Self-power	Bus-power
PD	PD90W	-



VSD7330



VSD7331

Description	USB-C+A 4xHDMI 4K adapter w/PD	USB-C 4xHDMI 4K adapter w/PD
Max. Displays	4x Displays	4x Displays
Max. Resolution	4x 4K60	4x 4K60
Legacy Video Port	4x HDMI	4x HDMI
USB Upstream	USB-C 10G	USB-C 10G
C to A Adapter	1x	-
Power mode	Bus-power / Self-power	Bus-power / Self-power
PD	PD90W	PD90W

PRODUCTS LIST

ADAPTER



AEC3200



AE32000

Description	USB-C to 2.5GbE	USB-A to 2.5GbE
USB Upstream	USB-C	USB-A
Ethernet	2.5GbE	2.5GbE
Power Mode	Bus-Power	Bus-Power



AEC1000



AEC3300

Description	USB-C to 1GbE	USB-C to 10GbE
USB Upstream	USB-C	USB-C
Ethernet	1GbE	10GbE
Power Mode	Bus-Power	Bus-Power

ELDERLY CARE



SD42000N1



SD42100N1



SD42300N1

Edge AI	Only output results, no images	Output Temperature data & events	Only output results, no images
IoT Protocol	Matter * ODM: optional Wi-Fi, Zigbee	Matter * ODM: optional Wi-Fi, Zigbee	Matter * ODM: optional Wi-Fi, Zigbee
Sensor	CMOS	Thermal Array	CMOS
Effective Distance (X)	100 CM < X < 600 CM	55 CM < X < 75 CM	100 CM < X < 600 CM
FOV	(H) 72°(V) 54°	60° ± 10°	(H) 80°(V) 65°
Response Time	Detected Human Presence < 1S Detected No Human Presence < 3S	< 3 seconds	< 3 seconds
Result Output	When the detectedstatus changes** **ODM customization available	When the detectedstatus changes** **ODM customization available	When an event detected** **ODM customization available
Brightness	> 10 Lux (IR LED can be used)	Working day and night	> 15 Lux (IR LED can be used)
Accuracy	> 97% (standing person)	0 ~ 320°C ± 3% @ Ambient Temperature 15°C~45°C	> 95% (in house)
False Alarm Rate	< 3%	-	< 5%
Power Consumption	Typical 600mA, 5VDC	< 55mA, 5VDC (Detection mode), < 90mA, 5VDC (Alarm mode)	< 15W
Power Input	USB Type-C Connector (5VDC, 1.5A)	USB Type-C Connector (5VDC, 1.5A)	USB Type-C Connector (5VDC, 3A)
Product Size	77 x 51x 16 mm	115 x 60 x 28.5 mm	109.3 x 67.1 x 56 mm

PRODUCTS LIST



Good Way, Your Innovative Hub

GOOD WAY TECHNOLOGY CO., LTD.

3F, No. 135, Ln. 235, Baociao Rd., Sindian Dist.,
New Taipei City 231, Taiwan.

Tel : +886(2) 8919 1200

Fax : +886(2) 8919 1220

Website : www.goodway.com.tw

E-mail : sales@goodway.com.tw

May 2025

