

2025 DOCKING
SOLUTIONS

DOCKING YOUR WORK, CONNECTING THE WORLD

Content

About GoodWay _____	P.02
Smart Management _____	P.03
AI Dock _____	P.04
Creator _____	P.05
Gaming _____	P.06
Conference & Hybrid Working _____	P.07
GaN Charger _____	P.09
Productivity _____	P.11
Specification _____	P.14
AIoT _____	P.23
AI Products _____	P.25

“

Docking Your Work, Connecting the World

Good Way, with over 40 years of experience, is the leading PC peripheral designing and manufacturing company, surpassing peers for unparalleled innovation, specialized skills, and professional sales services.

Beyond just docks, Good Way continually evolves with unlimited creativity and passion, dedicated to creating intelligent solutions that connect seamlessly to the future world.

”

About Goodway

GoodWay is the world's leading PC peripheral design and manufacturing company. Founded in 1983, the company is ranked above its peers for innovation, specialized skills and professional sales services. The company has a solid foundation of R&D, Sales Services and Product Development teams, each working closely to fulfil customer requirements. We have been the best business partner for global brands and will continue to enhance our partnerships with our competitive advantages.

Good Way has dedicated to product development, having many brilliant R&D engineers in Taipei headquarter and establishing overseas manufacturing sites in Taipei and Kunshan. The production and operation in factories are compliant with ISO 9001/14001 standards overall, which ensure the high quality and strict management in materials and labor force.

Good Way also provides many options and business opportunities to cooperated customers including the world's well-known ODM companies, resellers and distributors by innovative product design. Currently, Good Way is focusing on Docking Station, USB peripherals and IoT applications to keep pace with the tech trends.

For more information, please visit www.goodway.com.tw

Headquarters / Good Way Technology Co., Ltd.



Tel : +886-2-8919-1200
Fax : +886-2-8919-1220
E-mail : sales@goodway.com.tw
Website : www.goodway.com.tw
3F, No. 135, Ln. 235, Baociao Rd., Sindian Dist.,
New Taipei City 231, Taiwan

Branch Offices



GWC Technology Inc. (U.S.A.)
Tel : +1-626-820-0665
Fax : +1-626-820-0949
E-mail : sales@gwctech.com
Toll Free : 1-800-699-1529
154 N. Aspan Ave. Azusa,
CA 91702 U.S.A.



**Good Trend Technology Co., Ltd.
(Shanghai, China)**
Tel : +86-21-6405-8810
Fax : +86-21-6405-8815
Room 8C,8F, Building E, No.50,
Lane2080, Lianhua Rd., Minhang
District, 201103, Shanghai, P.R. China

Manufacturing Sites



Good Way Technology Co., Ltd.
Tel : +886-2-2695-2100
Fax : +886-2-2695-2130
E-mail : sales@goodway.com.tw
4F., No.43, Zhongxing Rd. Xizhi Dist.,
New Taipei City 221012, Taiwan



Good Way Electronics Co., Ltd.
Tel : +86-512-5786-0888
Fax : +86-512-5786-0800
E-mail : sales@goodwayks.com.cn
No.101, Hengchangjing Road,
Zhoushi Town, Kunshan City,
Jiangsu 215337, P.R China

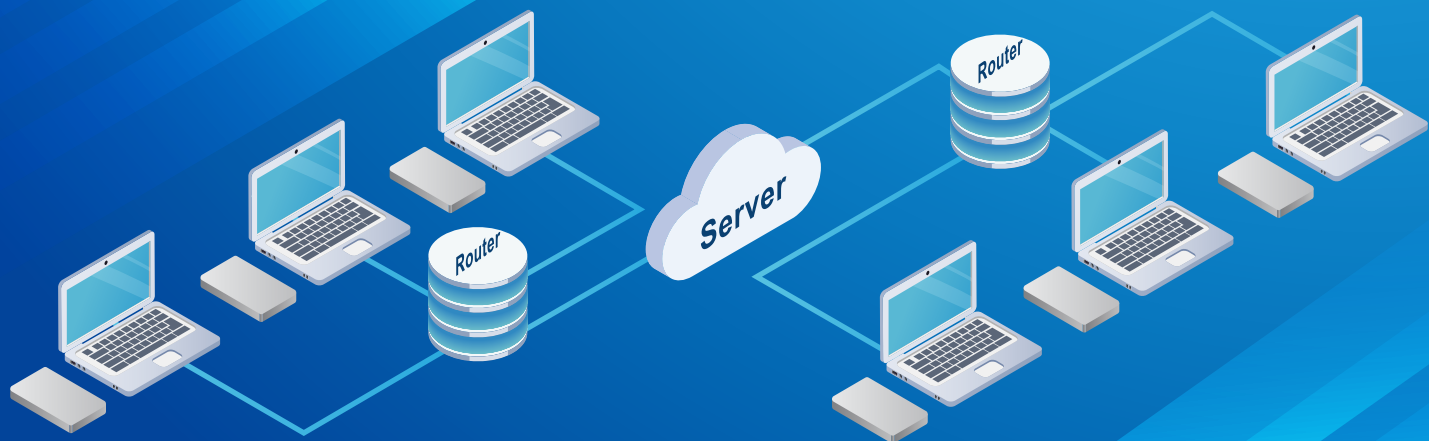


**Good Way Technology Vietnam
Company Limited**
Lot E2-1 (belongs to Lot E2), Lien
Ha Thai Industrial Park (Green iP-1),
Thai Thuy district, Thai Binh
province, Vietnam.

• Copyright © 2024 Good Way Technology. All rights reserved.

• All services and products' photos, pictures, specifications, function descriptions, or predictions are provided as reference for clients only. All services and products are provided by the agreed written between clients and us. Please contact our sales representatives for more information per your needs.

• All IP properties and information, including photos, trademarks, logos, patents, technologies and etc. of the brochures, are the properties for Good Way Technology or the authorized parties by law, including but not limited to HDMI technology and etc.. All brochures' information related to Product's or Services' performances, functions and etc., could be referenced reports from professional specific Labs' or certified units' or the authorized parties' self-evaluation for commercial applications.



Smart Management

Good Way provides the full line of Smart dock, covering DisplayLink, MST, and Thunderbolt Technology. The Smart dock offers the best solution to the desk management by fast and massive deployments, web dashboard portal for remote IT management, energy saving, and auto-firmware upgrading features to make hybrid office have the most effective and efficient management, and save the costs of the IT maintenances.

- Cloud/server management for the LAN-connected docks.
- Remote monitoring and controlling for port status and usage.
- Scheduling firmware update from web portal via network without PC/NB connected.
- Schedule to auto power on/off dock to save energy to be meet ESG trend.

USB-C Universal Dual 4K Smart Dock

DUD8380

- USB-C DisplayLink technology
- USB-C UFP with PD charging up to 96W
- 2x DP/HDMI , Dual 4K60 displays
- USB DFP with 2× USB-C 10G (one with PD20W), 2× USB-A 5G, and 3× USB-A 10G, Built-in LAN and audio ports



USB-C DP1.4 MST Smart Dock

DUD8390

- USB-C DP1.4 MST technology
- USB-C UFP with PD charging up to 96W
- 2xDP and 1x HDMI, Dual 4K60, or triple displays at 4K30
- USB DFP with 2× USB-C 10G, 2× USB-A 10G, and 2× USB-A 5G, Built-in LAN and audio ports

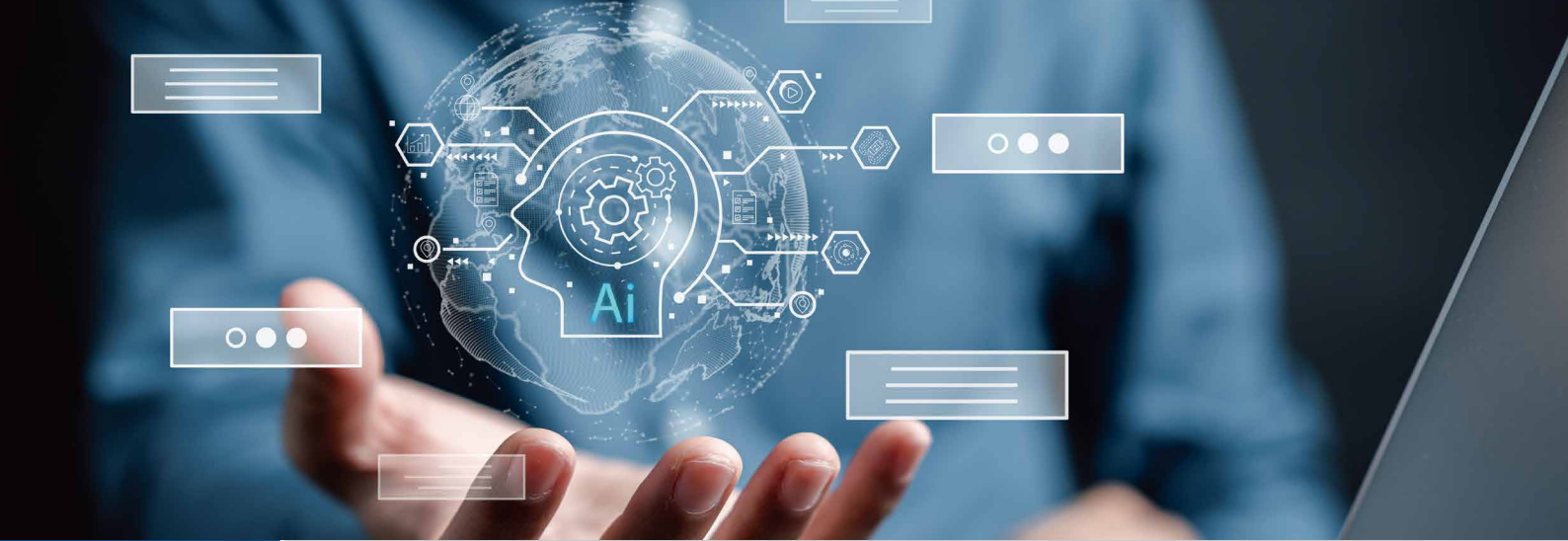


Thunderbolt 4 Smart Dock

DBD8400

- Thunderbolt 4 Technology
- One Thunderbolt 4 UFP with PD charging up to 90W
- 1xThunderbolt port and 2x DP output, dual 4K60 displays
- USB DFP with 1× TBT4/USB-C, 1× USB-C 10G, 3× USB-A 10G, and 1×USB-A 2.0, Built-in LAN and audio ports





AI Dock

Good Way AI product line will transform your non-AI PC to AI PC, or increases more computing power to AI PC. It incorporates with latest Thunderbolt 5 and USB4 technology , compatible with all M.2 or MXM PCIe interfaced AI modules in the market, for the variable AI applications.

Thunderbolt 5 AI Dock

DBF7056

- Thunderbolt 5 fast connectivity to the host
- M.2 interface of AI processor
- 26TOPS computing power of fast AI performance
- Support Google TensorFlow frameworks of machine learning
- Support Lite / ONNX / Keras / Pytorch software
- Support maximum 4K120 x3 displays and full dock function with Thunderbolt Downstream , USB-A, USB-C, 2.5GbE, SD.
- PD140W to supply the host
- Self-powered with DC180W in



Mobile AI Accelerator

DU4HL80

- USB4 40Gbps fast connectivity to the host
- M.2 interface of AI processor
- 26TOPS computing power of fast AI performance
- Support Google TensorFlow frameworks of machine learning
- Support Lite / ONNX / Keras / Pytorch software
- Compatible with Linux and Windows OS
- Bus-powered 15W to AI accelerator



Mobile GPU Adapter

DU4A500

- USB4 40Gbps fast connectivity to the host
- MXM interface of AI processor
- Extreme computing power with CUDA core 2048, Tensor core 64, 100TOPS
- GPU memory in 4GB GDDR6
- Support NVIDIA CUDA Toolkit 8.0, CUDA Compute version 6.1
- Support OpenCL 1.2, DirectX 12.1, Open GL 4.6, and Vulkan 1.0
- Compatible with Linux and Windows OS
- Self-powered 15W to AI accelerator with USB-C In





Creator

Good Way's Thunderbolt Dock has a simplest connection, best performance, and highest reliability that allows creator to work long hours with correct color, valid resolution and frame rate. It also assists the design work for display drawing, parameter setting, model display, and information survey at the same time to make design work valid and accurate. The Thunderbolt 4 technology is 40Gbps, the Thunderbolt 5 is up to 80/120Gbps.

Thunderbolt 5 /USB v2 SSD Dock

DBF7050

- Thunderbolt 5 upstream port delivers up to 140W for laptop power
- There Thunderbolt 5 downstream ports.
- One supports PD60W for second PC, and other two support PD15W
- Supports one M.2 PCIe Gen 4×4 NVMe SSD with Read up to 6,200 MB/s
- Supports three 4K144 displays and two 8K60 display
- Perfectly compatible with USB4, USB4 80, Thunderbolt 3 and 4



Thunderbolt 5 /USB v2 Dock

DBF7052

- Thunderbolt 5 upstream port delivers up to 140W for laptop power
- There Thunderbolt 5 downstream ports.
- One supports PD60W for second PC, and other two support PD15W
- Supports three 4K144 displays and two 8K60 display
- Perfectly compatible with USB4, USB4 80, Thunderbolt 3 and 4



Thunderbolt 4 / USB4 Dock

DBD1100 / DBD1105 / DBD1010

- Thunderbolt 4 upstream port delivers up to 100W for laptop power
- Three Thunderbolt 4 downstream ports PD15W
- Supports one 8K30 and dual 4K60 displays

DBD1100



DBD1010



Thunderbolt 4 / USB4 Dock Pro

DBD1330 / DBD1335 / DBD1337 / DBD1338

- Thunderbolt 4 upstream port delivers up to 100W for laptop power
- Two Thunderbolt 4 downstream ports PD15W
- One HDMI2.1 video output port
- Supports one 8K30 and dual 4K60 displays





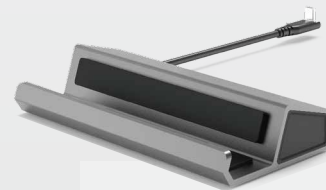
Gaming

Good Way provides gaming accessories for Gaming application market. The Game console dock is compatible with Steam Deck or most of Game consoles in the market. The video capture series can capture the game and online streaming via OBS or Twitch.

Game Console Dock

DUD7390

- 1× HDMI to extend gaming console's screen to larger monitor /TV at up to 4K60 resolution
- Downstream ports with 2× USB-A and 1× USB-C for connecting various USB devices
- Supports LAN connectivity with one RJ45 port
- Perfectly compatible with Steam Deck, and other Game consoles



HDMI 4K144 Video Capture

VUZ7260 (without RGD LED) / VUZ7261 (with RGB LED)

- Video capture for streaming, editing, screen sharing
- HDMI input supports 4K144Hz resolution specified in HDMI2.1
- HDMI output supports 4K144Hz loop through to the external monitor
- USB-C in USB3.2 10Gbps connection for rapid 4K60Hz raw data to PC
- UAC and UVC compliant for high quality video and audio
- Perfectly compatible with Windows, Mac, and Linux for diverse users
- RGB lighting strip for color mixture and gaming atmosphere
- 3.5mm audio jacks for microphone and headphones



VUZ7260

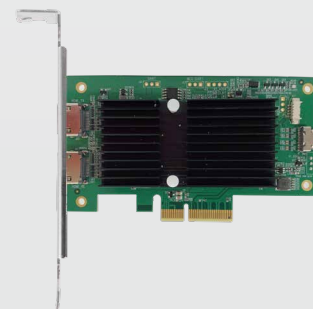


VUZ7261

HDMI 4K144 PCIe Video Capture Card

VUZ7270

- Video capture for streaming, editing, screen sharing
- HDMI input supports 4K144Hz resolution specified in HDMI2.1
- HDMI output supports 4K144Hz loop through to the external monitor
- PCIe Gen3 x2 4K60 raw capture
- UAC and UVC compliant for high quality video and audio





Conference & Hybrid Working

USB3 Extender PD Dongle Kit

HUV6601

- Incorporate HDBaseT-USB3 technology
- Support USB isochronous and bulk transfer mode
- USB3.1 5Gbps bidirectional transmission over the CAT5/6 cable up to 100m
- Host-Side HUV6701 supports USB bus power and Self-power
- Host-Side HUV6701 supports Host PC PD charging up to PD100W
- Device-Side supports USB device PD charging to PD45W
- Compatible with all USB devices



USB3 Hub Switch Extender Kits

HUV6600

- Incorporate HDBaseT-USB3 technology
- Support USB isochronous and bulk transfer mode
- USB3.1 5Gbps bidirectional transmission over the CAT5/6 cable up to 100m
- Host-Side HUV6620 supports Dual PC host switch via remote button cable
- Device-Side HUV6610 supports 4 USB-A downstream ports
- Compatible with all USB devices

HUV6610



HUV6620



USB3 Dual HDMI adapter

ANC1261

- USB3.0 DL-6950 technology
- USB-C/A connectivity, USB bus-powered
- Dual HDMI outputs, and Up to dual 4K60 displays



Wireless Display Adapter

NDW6000

- Wirelessly mirroring or extending PC screen to external display
- Up to 1080p60 video resolution
- Driverless, plug-n-play
- Compatible with Windows, Android, Chrome, MacOS, iOS.
- Compatible with all PC, laptop, tablet, smart phone with DP_ALT Type-C supported
- Transmitter NDW6010 has USB-C connected to PC with USB power
- Receiver NDW6020 has HDMI connection to TV and needs 5V USB-A power

NDW6020 (RX)



NDW6010 (TX)

Meeting Console with USB3 Extender and BYOD screen sharing

DMB7370

The USB3 extender + 10.1" Meeting Console is HUV6700Z1+DMB7370D1.

- 10.1-Inch touch display
- USB3 extender up to 100m over CATx cable and provide PoE power
- Ready for Teams Rooms and Zoom Rooms certification
- HDMI and USB-C content sharing from BYOD laptop
- Apps button for extension



Booking Dock

DMB7241

- MediaTek Genio 700 MT8390 with RTC
- 5" LCD Touch Panel 1280x720@60Hz
- WiFi 6 + BT(option)
- Light-Sensor
- 180W DC power jack
- PD charge up to 96W (20V/4.8A) from USB-C 10G
- USB Type-A (10G) x3
- USB-Type-C (10G) x2
- LAN (1GbE)
- HDMI 2.0, 3840x2160@60Hz
- DP1.4, 3840x2160@60Hz



USB-C KVM Dock

DUK6850

- KVM Switch: 2 PC host swappable, to switch Display and USB seamlessly
- Switch button: onboard switch button or external button cable
- Share mode: Display each PC screen on each monitor
- Host PD charging: PD 65W for one PC, Max. PD 45W for both two PCs
- File Transfer: Drag & drop, copy and paste
- Mouse cursor surfs across two PCs, and control two PCs
- Compatibility with Windows and macOS



4K Video Capture Adapter

VUZ7140

- BYOD screen sharing in conferencing or meeting room
- HDMI input supports 4K60
- USB capture in 4K60 (MJPEG) or 4K30 (raw data)
- USB-A USB3.0 5Gbps connected to PC host
- UAC and UVC compliant



GaN charger Dock

DUG7380

The New 140W GaN Charger dock is designed for extra connectivity demands. It can support PD profile from 140W to charge the laptop with build-in 150W GaN PSU.

- Upstream: USB-C 10G data w/ max 140W charger
- Downstream:
 - USB-C 10G data x1 w/ max. 140W charger
 - USB-A 10G data x2 w/ BC 1.2, 7.5W
- HDMI 2.0 output, it can support resolution up to 4K60Hz
- Smart power display PowerSense
- LAN (1GbE)





GaN Charger

240W 6 ports GaN Charger

DWGC102Z1

- Good Way's latest Flash Series charging strategy, through HMI interface, allows full communication with user for real-time charging status and requirements. In addition to providing an adaptive charging regulation function equal to or greater than the "Full-Time Power Distribution Technology," it also offers users the option to customize priority output, enabling them to override the automatic regular distribution and fulfill the most urgent charging requirements.
- The GW PowerSense strategy separates different functional modules, combined with HMI control elements, providing varying levels of intelligence or control across different product segments.
- The GW PowerSense strategy and control mechanism can achieve firmware update through Dockify software.

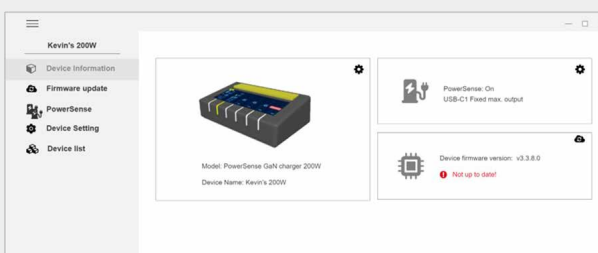


LCD display information

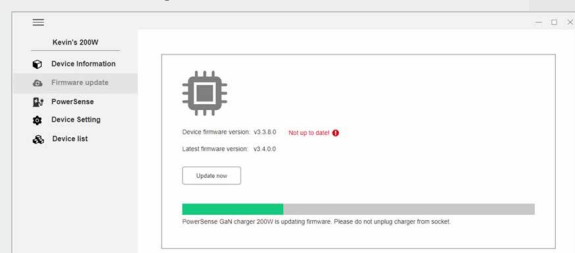
- 1 Thor Mode
- 2 Charging time
- 3 Power consumption Watt-hour
- 4 Dynamic max watt
- 5 Real time watt
- 6 This port fixed max output



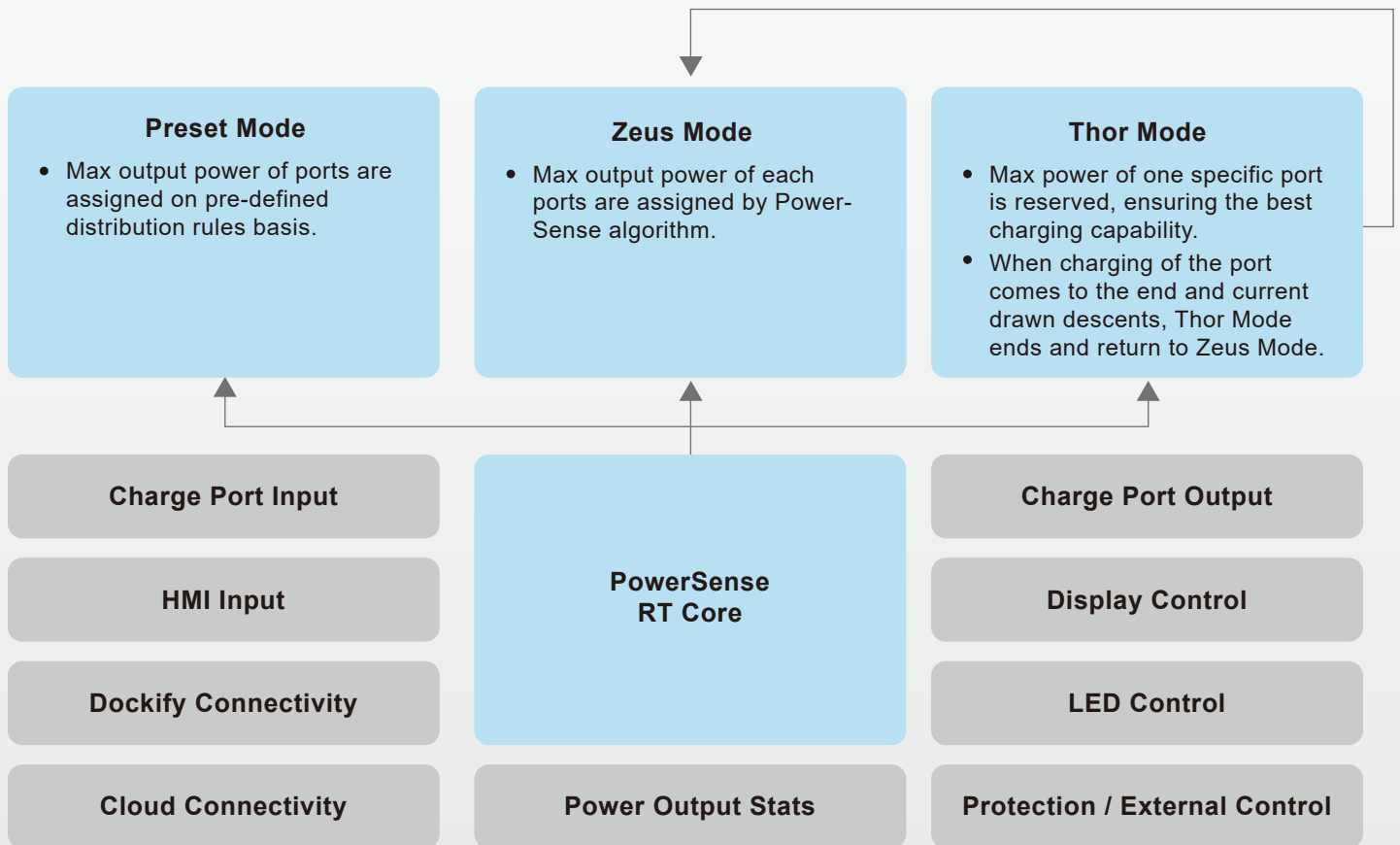
Device Information



Firmware Update



PowerSense Modes



Model	DWGC101Z1	DWGC100Z1	DWGC102Z1
Description	70W 1 port GaN Charger	140W 4 ports GaN Charger	240W 6 ports GaN Charger
Type	Wall / Power Strip	Wall / Power Strip	Desktop
Input Voltage	100-240V ~ 50/60Hz	100-240V ~ 50/60Hz	100-240V ~ 50/60Hz
Max Output (Total)	70W	140W	240W
Single port Output	USB-C PD70W	C1/C2/C3 PD140W A 22.5W	C1/C2/C3/C4 PD140W A1/A2 18W
Protocol	PD 3.1 / QC 4+ / PPS	PD 3.1 / QC 4+ / PPS	PD 3.1 / QC 4+ / PPS
Ports	1 x USB-C	3 x USB-C 1 x USB-A	4 x USB-C 2 x USB-A
LCD Display	No	Yes	Yes
AI Mode Button	No	Yes	Yes
PowerSense Protection	PowerSense 2.0 Fire-Retardant Material Temperature Control Overcurrent Protection Overvoltage Protection Short-circuit Protection Surge Protection	PowerSense 3.0 Fire-Retardant Material Temperature Control Overcurrent Protection Overvoltage Protection Short-circuit Protection Surge Protection	PowerSense 3.0 Fire-Retardant Material Temperature Control Overcurrent Protection Overvoltage Protection Short-circuit Protection Surge Protection
Certificate	ETL / FCC / CCC / RoHS / UKCA / SAA / KC	ETL / FCC / CCC / RoHS / UKCA / SAA / KC	ETL / FCC / CCC / RoHS / UKCA / SAA / KC
Size	1.48 x 1.29 x 1.97 in 37.7 x 32.7 x 50 mm	2.99 x 1.22 x 2.99 in 76 x 31 x 76 mm	4.72 x 1.65 x 3.54 in 120 x 42 x 90 mm
Weight	4.2 oz / 120g	10.2 oz / 290g	20.8 oz / 590g



Productivity

Thunderbolt

Multi-display at work can provide more visibility and increase working productivity. Good Way provides full series of docking stations, with different interface technology, Thunderbolt 3/4/5, USB-A/C DisplayLink, USB-C MST, and USB4 docks.

Thunderbolt 5 /USB v2 Dock

DBF7050 / DBF7052 (SSD)

- Thunderbolt 5 upstream port delivers up to 140W for laptop power
- Three Thunderbolt 5 downstream ports.
- One supports PD60W for second PC, and other two support PD15W
- Supports one M.2 PCIe Gen 4×4 NVMe SSD with Read up to 6,200 MB/s
- Supports three 4K144 displays and two 8K60 display
- Perfectly compatible with USB4, USB4 80, Thunderbolt 3 and 4
- DBF7050: built in M.2 interface for NVMe SSD



Thunderbolt 4 / USB4 Dock

DBD1100 / DBD1105 / DBD1010

- Thunderbolt 4 upstream port delivers up to 100W for laptop power
- Three Thunderbolt 4 downstream ports PD15W
- Supports one 8K30 and dual 4K60 displays



DBD1105



DBD1100

Thunderbolt 4 / USB4 Dock Pro

DBD1330 / DBD1335 / DBD1337 / DBD1338

- Thunderbolt 4 upstream port delivers up to 100W for laptop power
- Two Thunderbolt 4 downstream ports PD15W
- One HDMI2.1 video output port
- Supports one 8K30 and dual 4K60 displays



DBD1330

DBD1337



Thunderbolt 3 /USB4 Video adapter

VSC7010

- Dual HDMI2.1 up to dual 4K120
- Bus-powered



DL-7400 Dock series

USB-C 5x 4K60 Dock - DUD3851/ DUD3751

USB-C 4x 4K60 Dock - DUD3801/ DUD3701

- USB-C 10G Upstream
- 2x USB-C 10G downstream with one PD30W
- 4x USB-A downstream
- 2.5G Ethernet, 1x audio combo
- PD charging up to PD96W
- DUD3851: 2x DP1.4 4K120 + 3x HDMI2.0 4K60
- DUD3751: 5x HDMI2.0 4K60
- DUD3801: 2x DP1.4 4K120 + 2x HDMI2.0 4K60
- DUD3701: 2x HDMI2.0 4K60



DL-6950 Dock series

USB-C 3x 4K60 Dock - DUD3501/ DUD3511

USB-C 2x 4K60 Dock - DUD3521/ DUD3531

- 1x USB-C 10G downstream with one PD20W
- 4x USB-A downstream
- 1G Ethernet, 1x audio in/out
- PD charging up to PD96W
- DUD3501: 3x DP/HDMI
- DUD3521: 2x DP/HDMI



USB-C 2x 4K60 Dock

DUD3561

- 4x USB-C 10G downstream with one PD30W
- 2x USB-A downstream
- 2.5G Ethernet, 1x audio in/out
- PD charging up to PD96W



DL-6950 Mini Dock series

USB-C 3x 4K60 Dock – DUD7200/ DUD7350

USB-C 2x 4K60 Dock – DUD7205/ DUD7355

- USB-C 10G Upstream with Tethered cable 100cm
- 2x USB-C 10G , and 4x USB-A 5G downstream
- 1G Ethernet, 1x audio in/out
- 1x USB-C PD charging port PD100W
- DUD7200: 3x HDMI
- DUD7350: 2x DP +1xHDMI
- DUD7205: 2x HDMI
- DUD7355: 2x DP



DisplayLink Adapter

USB-C 2x HDMI adapter – ANC1260/ ANC1261

USB-C 4x HDMI adapter – VSD7330

- USB-C 10G Upstream
- HDMI display up to 4K60
- ANC1260 : USB-C, PD charging
- ANC1261 : USB-C/A, without PD
- VSD7330 : USB-C/A, PD charging



USB-C MST/SST Dock

USB-C DP1.4 MST Mini Dock

VSD5480 / VSD5481

- Two legacy DP ports extend the display at 4K60 resolution
- PD 3.0 charging to laptop is up to PD85W
- 5x USB-A downstream ports
- One SD card reader and one 1Gbps Ethernet port
- One PD charging port
- VSD5480: tethered cable 30cm
- VSD5481: tethered cable 100cm



USB-C DP1.4 MST Dock

DUD2070

- USB-C Triple display with DP1.4 MST technology
- 2xDP 1.4 and 1x HDMI2.0, Up to 2x4K60 or 3x4K30 displays
- 1xUSB-C 10G, and 3x USB-A 10G (with one BC1.2)
- PD 3.0 charging to laptop is up to PD85W



USB-C DP1.4 MST Dock

DUD2170

- USB-C Triple display with DP1.4 MST technology
- 2xDP 1.4 and 1x HDMI2.0, Up to 2x4K60 or 3x4K30 displays
- 2xUSB-C 10G(with BC1.2) , and 2xUSB-A 10G(with one BC1.2), 2xUSB-A 2.0
- PD 3.0 charging to laptop is up to PD85W



USB4 Compact Dock

DU41000

- USB4 offers up to 40Gbps data transfer speed
- Tethered cable with PD pass-through up to 85W
- 1x HDMI2.1 and 1x DP1.4 support single 8K30/4K120 or dual 4K120 displays
- 2x USB-A 10G and 1x USB-C 10G downstream
- 1Gbps LAN and audio ports
- Supports both bus-powered and self-powered modes



USB4 DP1.4 MST Dock

DU47080

- USB4 offers up to 40Gbps data transfer speed
- 2x DP1.4 port and 1x HDMI port
- With 4 Lane DP1.4 DSC, it offers up to 2x 4K120 or 3x 4K60 displays
- 2xUSB-C 10G, and 4xUSB-A 10G (with one BC1.2)
- PD 3.0 charging to laptop is up to PD96W





Model	DGD3000	VSD5251	DUD7220
Description	USB-C 5-in-1 WWCB	USB-C 5-in-1	USB-C 10-in-1
Max. Display	1x Display	1x Display	3x Display
Max. Resolution	1x4K60	1x4K60	2x4K60+1x4K30
Legacy Video Port	1xHDMI2.0	1xHDMI2.0	1xDP1.4+2xHDMI2.0
USB Upstream	USB-C 5G	USB-C 5G	USB-C 10G
USB Downstream	2x USB-A 5G	1x USB-A 5G 1x USB-C 5G (Data/PD)	1x USB-C 10G 1x USB-C 10G (Data/PD) 1x USB-A 10G 2x USB-A 5G
SD Card Reader	–	–	–
Audio in/out	–	–	–
LAN	1GbE	1GbE	1GbE
Power mode	Bus-power/Self-power	Bus-power/Self-power	Bus-power/Self-power
PD	Up to PD85W	Up to PD85W	Up to PD85W
Power in	1x USB-C	1x USB-C	1x USB-C
USB-C Cable	30cm	30cm	30cm



Model	DUD7170	DUD7180	DUD7190
Description	USB-C 9-in-1	USB-C 10-in-1	USB-C 11-in-1
Max. Display	1x Display	1x Display	2x Display
Max. Resolution	1x4K60	1x4K60	2x4K60
Legacy Video Port	1xHDMI2.0	1xHDMI2.0	2xHDMI2.0
USB Upstream	USB-C 5G	USB-C 5G	USB-C 10G
USB Downstream	3x USB-A 5G	2x USB-C 10G 1x USB-A 10G 2x USB-A 5G	2x USB-C 10G 1x USB-A 10G 2x USB-A 5G
SD Card Reader	1x SD3.0 / 1x MicroSD	1x SD3.0 / 1x MicroSD	–
Audio in/out	1x	–	–
LAN	1GbE	1GbE	1GbE
Power mode	Bus-power/Self-power	Bus-power/Self-power	Bus-power/Self-power
PD	Up to PD85W	Up to PD85W	Up to PD85W
Power in	1x USB-C	1x USB-C	1x USB-C
USB-C Cable	15cm	15cm	15cm

Ethernet Adapters



Model	AEC1000	AEC3200	AE32000	AEC5000	AEB1500
Description	USB-C to 1GbE	USB-C to 2.5GbE	USB-A to 2.5GbE	USB-C to 5GbE	USB4 to 10GbE
USB Upstream	USB-C	USB-C	USB-A	USB-C	USB4
Ethernet	1GbE	2.5GbE	2.5GbE	5GbE	10GbE
Power Mode	Bus Power	Bus Power	Bus Power	Bus Power	Bus Power

Smart Dock



Model	DUD8380	DUD8390	DBD8400
Description	USB-C DisplayLink Smart Dock	USB-C DP1.4 MST Smart Dock	Thunderbol 4 Smart Dock
Remote IT management	Cloud / Server to LAN	Cloud / Server to LAN	Cloud / Server to LAN
Remote firmware update	Yes	Yes	Yes
USB-C Upstream	1x USB-C 10G	1x USB-C 10G	1x TBT4
Video output port	2x HDMI2.0, 2x DP1.2	1x HDMI2.1, 2x DP1.4	2x DP
Max. Displays	2x Displays	3x Displays	2x Displays
Max. Resolution	2x 4K60	2x 4K60 / 3x 4K30	1x8K30/ 2x 4K60
USB Downstream	2x USB-C 10G (1x PD20W) 3x USB-A 10G (1xBC1.2) 2x USB-A 5G	2x USB-C 10G 2x USB-A 10G (1xBC1.2) 2x USB-A 5G	1x TBT4 1x USB-C 10G 3x USB-A 10G (1xBC1.2) 1x USB-A 2.0
Audio in/out	1x	1x	1x
LAN	1GbE	1GbE	1GbE
PD	PD96W	PD96W	PD90W
Power in	DC135W	DC135W	DC135W

AI Dock



Model	DBF7056	DU4HL80	DU4A500
Description	TBT5 AI Dock	Mobile AI accelerator	Mobile GPU Adapter
Upstream	Thunderbolt 5	USB4 40Gbps	USB4 40Gbps
AI processor Interface	M.2	M.2	MXM
Computing Power	26TOPS	26TOPS	CUDA core 2048, Tensor core 64, 100TOPS
OS support	Linux, Windows	Linux, Windows	Linux, Windows
Dock function	Yes	—	—
Max. Displays	3x 4K120 displays	—	—
Power mode	Self-power	Bus-power 15W	Self-power
PD	PD140W	—	—
Self-Power in	DC180W	—	USB-C 45W

Capture



Model	VUZ7260	VUZ7261	VUZ7270	VUZ7140
Description	HDMI to USB-C 4K60 Capture	HDMI to USB-C 4K60 Capture	HDMI to PCIe 4K60 Capture	HDMI to USB-C 4K60 Capture
Video Input Port	HDMI, 4K144	HDMI, 4K144	HDMI, 4K144	HDMI, 4K60
Video Output Port (loop-through)	HDMI, 4K144	HDMI, 4K144	HDMI, 4K144	—
Upstream (to PC)	USB-C 10G	USB-C 10G	PCIe Gen3x2	USB-A 5G
Raw Data Resolution	4K60 Raw data	4K60 Raw data	4K60 Raw data	4K60 MJPG/ 4K30 Raw data
USB Class Supported	UAC/UVC	UAC/UVC	UAC/UVC	UAC/UVC
Audio in/ out port	1x	1x	—	—
Audio port for Party Chat	1x	1x	—	—
RGB Lighting	—	Yes	—	—
Power in	USB-C Bus-power	USB-C Bus-power	PCIe power	USB Bus-power
Application	Game Streaming, Creator	Game Streaming, Creator	Game Streaming, Creator	Conferencing, Share screen

USB3 Hub Switch Extender Kit



HUV6600	Host-side HUV6620	Device-side HUV6610
Description	Dual-Host USB 5Gbps Extender	4-Port USB 5Gbps Extender
USB Upstream	2× USB-C 5G	–
USB Downstream	1× USB-A 5G (5V, 0.9A) 1× USB-A 2.0 (5V, 0.5A)	4× USB-A 5G (5V, 1.2A)
HDBT-USB3 Port	1× RJ45	1× RJ45
Switch button	1x 2.5mm 1x remot cable 1.5m	–
PoE	PD side	PSE side
Power in	PoE from HUV6610	DC 48V1A
Firmware update	1× Micro USB	1× Micro USB

USB3 Extender PD Dongle Kit



HUV6601	Host-side HUV6701	Device-side HUV6801
Description	USB3 Extender PD dongle	USB3 Extender PD dongle
USB Upstream	1× USB-C 5G	–
USB Downstream	–	1× USB-C 5G
HDBT-USB3 Port	1× RJ45	1× RJ45
Power Mode	Bus-power / Self-power	Self-power
PD	PD to Host, up to 100W	PD to Device, up to 45W
Power in	1x USB-C	1x USB-C

Meeting Console Extender Kit



DMB7370	Host-side HUV6700	Device-side DMB7370
Description	USB3 Extender	Meeting Console
LCD screen	–	10.1" LCD panel, 1280x800
USB Upstream	1×USB-C 5G	–
USB Downstream	–	1x USB-A 5G (5V0.9A)
Ingest port for screen sharing	–	1× HDMI in 1x USB-C in (DP_ALT mode)
HDBT-USB3 Port	1× RJ45	1× RJ45
System Power in	DC 48V1A	PoE from HUV6700
PD charging for USB-C ingest port	–	1x USB-C charging port

Wireless HDMI Display Dongle



Model	NDW6000
Description	Wireless Display P2P Dongle
Max. display	1080P60
Transmitter (connected to PC)	1x USB-C (DP_ALT and 5V bus-power)
Receiver (connected to TV)	1x USB-A 5V power in 1x HDMI port to TV
Driver	drieverless, plug & play
OSCompability	Windows, macOS, iOS, Android OS

Thunderbolt 5 / USB4 v2 series



Model	DBF7050	DBF7052	DBF7056
Description	Thunderbolt 5 SSD Dock	Thunderbolt 5 Full Dock	Thunderbolt 5 AI Dock
Max. Display	2× 8K60 / 3× 4K144	2× 8K60 / 3× 4K144	2× 8K60 / 3× 4K144
Legacy Video Port	—	—	—
Thunderbolt Upstream	1x TBT5	1x TBT5	1x TBT5
Thunderbolt Downstream	3x TBT5 (1xPD60W, 2x15W)	3x TBT5 (1xPD60W, 2x15W)	3x TBT5 (1xPD60W, 2x15W)
USB Downstream	3× USB-A 10G 1× USB-A 5G	3× USB-A 10G 1× USB-A 5G	3× USB-A 10G 1× USB-A 5G
SD Card Reader	1x SD4.0	1x SD4.0	1x SD4.0
LAN	1× 2.5GbE	1× 2.5GbE	1× 2.5GbE
Audio in/out	1×	1×	1×
Internal M.2	1xM.2 for SSD 2280	—	1xM.2 for AI module 2280
PD	Up to PD140W	Up to PD140W	Up to PD140W
Power in	DC180W	DC180W	DC180W
Chassis	Plastic	Aluminum	Plastic

Thunderbolt 4 / USB4 series



Model	DBD1330	DBD1335	DBD1337
Description	Thunderbolt 4 Dock Pro	Thunderbolt 4 Dock Pro	Thunderbolt 4 Dock Pro 2C2A
Max. Display	1× 8K30 / 2× 4K60	1× 8K30 / 2× 4K60	1× 8K30 / 2× 4K60
Legacy Video Port	1× HDMI	1× HDMI	1× HDMI2.1
Thunderbolt Upstream	1x TBT4	1x TBT4	1x TBT4
Thunderbolt Downstream	2x TBT4 (2x15W)	2x TBT4 (2x15W)	2x TBT4 (2x15W)
USB Downstream	4× USB-A 10G (1xBC1.2)	4× USB-A 10G (1xBC1.2)	2× USB-A 10G(1xBC1.2) 2× USB-C 10G (1x15W)
SD Card Reader	1x SD4.0	1x SD4.0	—
LAN	1× 2.5GbE	1× 2.5GbE	1× 2.5GbE
Audio in/out	1×	1×	1×
PD	PD96W	PD96W	PD96W
Power in	DC135W	DC135W	DC150W
Chassis	Aluminum	Plastic	Plastic

Thunderbolt 4 / USB4 series



Model	DBD1338	DBD7340	DBD8400
Description	Thunderbolt 4 Dock Pro 2C2A	Thunderbolt 4 Dual DP Dock	Thunderbolt 4 Smart Dock
Max. Display	1× 8K30 / 2× 4K60	1× 8K30 / 2× 4K60	1× 8K30 / 2× 4K60
Legacy Video Port	1× HDMI2.1	2x DP1.4	2x DP1.4
Thunderbolt Upstream	1x TBT4	1x TBT4	1x TBT4
Thunderbolt Downstream	2x TBT4 (2x15W)	1x TBT4 (15W)	1x TBT4 (15W)
USB Downstream	2× USB-A 10G(1xBC1.2) 2× USB-C 10G (1x15W)	3× USB-A 10G(1xBC1.2) 1× USB-A 2.0 1x USB-C 10G	3× USB-A 10G(1xBC1.2) 1× USB-A 2.0 1x USB-C 10G
SD Card Reader	1x SD4.0	—	—
LAN	1× 2.5GbE	1× 1GbE	1× 1GbE
Audio in/out	1×	1×	1×
PD	PD96W	PD90W	PD90W
Power in	DC150W	DC135W	DC135W
Chassis	Plastic	Plastic	Plastic

Thunderbolt 3 / USB4 series



Model	DBC1560	DBC15A0
Description	Thunderbolt 3 Mini Dock 2	Thunderbolt 3 Mini Dock
Max. Display	2× 4K60	1x 8K30 / 2x 4K60
Legacy Video Port	2x HDMI2.0	1x HDMI2.0 + 1x DP1.4
Thunderbolt Upstream	1× TBT3	1× TBT3
Thunderbolt Downstream	—	—
USB Downstream	3× USB-A 10G	2× USB-A 10G
SD Card Reader	—	—
LAN	1× 1GbE	1× 1GbE
Audio in/out	—	1×
Power mode	USB Bus-power/ Self-power	USB Bus-power/ Self-power
PD	PD60W	PD60W
Power in	USB-C	USB-C

Thunderbolt 3 / USB4 series



Model	DBC1480	VSC7010
Description	Thunderbolt 3 Dual DP Dock	Thunderbolt Dual 4K120 Adapter
Max. Display	1x 8K30 / 2x 4K60	2× 4K120
Legacy Video Port	2x DP1.4	2× HDMI2.1
Thunderbolt Upstream	1× TBT3	1× TBT3
Thunderbolt Downstream	—	—
USB Downstream	1x USB-A 10G (1xBC1.2) 2x USB-A 5G 2x USB-C 10G	—
SD Card Reader	—	—
LAN	1× 1GbE	—
Audio in/out	1×	—
Power mode	Self-power	USB Bus-power
PD	PD60W	—
Power in	DC135W	—

Thunderbolt 4 / USB4 series



Model	DBD1010	DBD1105	DBD1100
Description	Thunderbolt 4 Compact Dock	Thunderbolt 4 Full Dock	Thunderbolt 4 Full Dock
Max. Display	1× 8K30 / 2× 4K60	1× 8K30 / 2× 4K60	1× 8K30 / 2× 4K60
Legacy Video Port	—	—	—
Thunderbolt Upstream	1x TBT4	1x TBT4	1x TBT4
Thunderbolt Downstream	3x TBT4 (3x15W)	3x TBT4 (3x15W)	3x TBT4 (3x15W)
USB Downstream	1x USB-A 10G (BC1.2)	3× USB-A 10G(1xBC1.2) 1× USB-A 2.0	3× USB-A 10G(1xBC1.2) 1× USB-A 2.0
SD Card Reader	—	1x SD4.0	1x SD4.0
LAN	1× 1GbE	1× 1GbE	1× 1GbE
Audio in/out	—	1×	1×
PD	PD85W	PD90W	PD90W
Power in	DC100W	DC135W	DC135W
Chassis	Aluminum	Plastic	Plastic



Model	DUD2260	DUD3400	DUD3500	DUD3600
Description	USB-C Multi-Mount Dock	Triple 2K Display	Triple 4K Display Dock	Quad 2K Display Dock
Max. Display	2x Displays	3x Displays	3x Displays	4x Displays
Max. Resolution	2x2K60	3x2K60	3x4K60	4x2K60
Legacy Video Port	2xHDMI	3xHDMI	3x DP/HDMI	4xHDMI
USB Upstream	USB-C 5G	USB-C 5G	USB-C 10G	USB-C 5G
USB Downstream	3x USB-A 5G (1xBC1.2)	1xUSB-C 5G (PD20W) 4xUSB-A 5G (1xBC1.2)	1x USB-C 10G (PD20W) 4x USB-A 5G (1xBC1.2)	1x USB-C 5G (PD20W) 4x USB-A 5G (1xBC1.2)
SD Card Reader	–	1xSD4.0	1xSD4.0	1xSD4.0
LAN	1GbE	1GbE	1GbE	1GbE
Audio in/out	1x	1x /1x	1x /1x	1x /1x
PD	PD85W	PD96W	PD96W	PD96W
Power in	DC135W	DC135W	DC135W	DC135W



Model	DUD3501	DUD3511	DUD3521
Description	Triple 4K Display Dock	Triple 4K Display Dock	Dual 4K Display Dock
Max. Display	3x Displays	3x Displays	2x Displays
Max. Resolution	3x4K60	3x4K60	2x4K60
Legacy Video Port	3x DP/HDMI	3x DP/HDMI	2x DP/HDMI
USB Upstream	USB-C 10G	USB-C 10G	USB-C 10G
USB Downstream	1x USB-C 10G (PD20W) 4x USB-A 5G	1x USB-C 10G (PD20W) 4x USB-A 5G	1x USB-C 10G (PD20W) 4x USB-A 5G
SD Card Reader	1xSD4.0	–	1xSD4.0
LAN	1GbE	1GbE	1GbE
Audio in/out	1x /1x	1x /1x	1x /1x
PD	PD96W	PD96W	PD96W
Power in	DC135W	DC135W	DC135W



Model	DUD3531	DUD3561
Description	Dual 4K Display Dock	Dual 4K Display Dock
Max. Display	2x Displays	2x Displays
Max. Resolution	2x4K60	2x4K60
Legacy Video Port	2x DP/HDMI	2x DP/HDMI
USB Upstream	USB-C 10G	USB-C 10G
USB Downstream	1x USB-C 10G (PD20W) 4x USB-A 5G (1xBC1.2)	4x USB-C 10G (1xPD30W) 2x USB-A 10G
SD Card Reader	–	1xSD4.0
LAN	1GbE	2.5GbE
Audio in/out	1x /1x	1x /1x
PD	PD96W	PD96W
Power in	DC135W	DC135W



Model	DUD3701	DUD3751	DUD3801
Description	Quad 4K Display Dock	5x 4K Display Dock	Quad 4K Display Dock
Max. Display	4x Displays	5x Displays	4x Displays
Max. Resolution	4x4K60	5x4K60	2x4K120 / 4x4K60
Legacy Video Port	4x HDMI	5x HDMI	2xDP+2xHDMI
USB Upstream	USB-C 10G	USB-C 10G	USB-C 10G
USB Downstream	2x USB-C 10G (1xPD30W) 4x USB-A 5G	2x USB-C 10G (1xPD30W) 4x USB-A 5G	2x USB-C 10G (1xPD30W) 4x USB-A 5G
SD Card Reader	—	—	—
LAN	2.5GbE	2.5GbE	2.5GbE
Audio in/out	1x	1x	1x
PD	PD96W	PD96W	PD96W
Power in	DC135W	DC135W	DC135W



Model	DUD3851	DUD7400
Description	5x 4K Display Dock	5x 4K Display Dock
Max. Display	5x Displays	4x Displays
Max. Resolution	2x4K120 / 5x4K60	2x4K120 / 4x4K60
Legacy Video Port	2xDP+3xHDMI	1xHDMI+2xDP
USB Upstream	USB-C 10G	USB-C 10G
USB Downstream	2x USB-C 10G (1xPD30W) 4x USB-A 5G	2x USB-C 10G(1xPD30W) 2x USB-C MFDP(4K60+USB10G) 2x USB-A 10G
SD Card Reader	—	—
LAN	2.5GbE	2.5GbE
Audio in/out	1x	1x
PD	PD96W	PD96W
Power in	DC135W	DC150W



Model	DUD7200	DUD7205	DUD7350	DUD7355
Description	USB-C Universal 3x4K Mini Dock	USB-C Universal 2x4K Mini Dock	USB-C Universal 3x4K Mini Dock	USB-C Universal 2x4K Mini Dock
Max. Display	3x Displays	2x Displays	3x Displays	2x Displays
Max. Resolution	3x 4K60	2x 4K60	3x 4K60	2x 4K60
Legacy Video Port	3x HDMI	2x HDMI	1x HDMI + 2x DP	2x DP
USB Upstream	USB-C 10G	USB-C 10G	USB-C 10G	USB-C 10G
USB Downstream	2x USB-C 10G 4xUSB-A 5G	2x USB-C 10G 4x USB-A 5G	2x USB-C 10G 4x USB-A 5G	2x USB-C 10G 4x USB-A 5G
SD Card Reader	—	—	—	—
LAN	1GbE	1GbE	1GbE	1GbE
Audio in/out	1x	1x	1x	1x
PD	up to PD85W	up to PD85W	up to PD85W	up to PD85W
Power in	1x USB-C	1x USB-C	1x USB-C	1x USB-C
Tethred cable	100cm	100cm	100cm	100cm



Model	DU3200	DU31260	DUD15Y0	DUD15X0
Description	Dual 2K Display Dock	Dual 2K Display Dock	Dual 4K Display Dock	Triple 4K Display Dock
Max. Display	2x Displays	2x Displays	2x Displays	3x Displays
Max. Resolution	2x2K60	2x2K60	2x4K60	2x4K60 + 1x4K30
Legacy Video Port	1xHDMI + 1xDVI	2xHDMI	2x DP/2xHDMI	2x DP/HDMI + HDMI
USB Upstream	USB-B 5G	USB-B 5G	USB-B 5G	USB-B 5G
USB Downstream	2xUSB-A 5G (1xBC1.2) 4xUSB-A 2.0	2xUSB-A 5G (1xBC1.2) 4xUSB-A 2.0	1xUSB-C 5G 5xUSB-A 5G (1xBC1.2)	1xUSB-C 5G 5xUSB-A 5G (1xBC1.2)
SD Card Reader	—	—	—	—
LAN	1GbE	1GbE	1GbE	1GbE
Audio in/out	1x / 1x	1x / 1x	1x / 1x	1x / 1x
PD	—	—	PD96W	PD96W
Power in	DC20W	DC20W	DC135W	DC135W



Model	ANC1260	ANC1261	VSD7330	AVP7320
Description	USB-C 2xHDMI 4K adapter w/PD	USB-C 2xHDMI 4K adapter	USB-C 4xHDMI 4K adapter w/PD	PCIe 4xHDMI 4K card
Max. Display	2x Displays	2x Displays	4x Displays	4x Displays
Max. Resolution	2x 4K60	2x 4K60	4x 4K60	4x 4K60
Legacy Video Port	2x HDMI	2x HDMI	4x HDMI	4x HDMI
USB Upstream	USB-C 10G	USB-C 10G	USB-C 10G	PCIe Gen3x2
Power mode	Bus-power/ Self-power	Bus-power	Bus-power/ Self-power	PCIe power
PD	up to PD90W	—	up to PD90W	—
Self-Power in	USB-C	—	USB-C	—

USB4 Dock



Model	VS41000	DU47080
Description	USB4 Mini Dock Dual Displays	USB4 Dock Triple Displays
Max. Display	2x Displays	3x Displays
Max. Resolution	1x 8K30 / 2x 4K120	1x 8K30 / 2x 4K120 / 3x 4K60
Legacy Video Port	1x HDMI2.1 + 1x DP1.4	1x HDMI2.0 + 2x DP1.4
USB4 Upstream	USB4 40Gbps	USB4 40Gbps
USB4 Downstream	—	—
USB Downstream	1x USB-C 10G(USB/PD in) 2x USB-A 10G	2x USB-C 10G 4x USB-A 10G (1xBC1.2)
Audio in/out	1x	1x
LAN	1GbE	2.5GbE
Power mode	Bus-power / Self-power	Self-power
PD	Up to PD85W	PD96W
Power in	1x USB-C	DC135W
Cable	Tethered cable 30cm	USB4 cable 1m



Model	DUD2070S	DUD2070R	DUD2170R
Description	USB-C MST 3x Display Dock	USB-C MST 3x Display Dock	USB-C MST 3x Display Dock
Max. Display	3x Displays	3x Displays	3x Displays
Legacy Video Port	2xDP1.4 + 1xHDMI2.0	2xDP1.4 + 1xHDMI2.1	2xDP1.4 + 1xHDMI2.1
Max. Resolution	2x 4K60 / 3x 4K30	2x 4K60 / 3x 4K30	2x 4K60 / 3x 4K30
USB Upstream	USB-C 10G	USB-C 10G	USB-C 10G
USB Downstream	1x USB-C 10G 3x USB-A 10G (1xBC1.2)	1x USB-C 10G 3x USB-A 10G (1xBC1.2)	2x USB-C 10G (1xBC1.2) 2x USB-A 10G (1xBC1.2) 2x USB-A 2.0
Card Reader	–	–	–
Audio in/out	1x	1x	1x
LAN	1GbE	1GbE	1GbE
PD	PD85W	PD85W	PD85W
Power in	DC135W	DC135W	DC135W



Model	DGD1001	DUK6850
Description	USB-C MST 3x Display Dock	USB-C KVM 2x4K dock
Max. Display	3x Displays	2x Displays
Legacy Video Port	2xDP1.4 + 2xHDMI2.0	2x HDMI2.0
Max. Resolution	2x 4K60 / 3x 4K30	2x4K60
USB Upstream	USB-C 10G	2x USB-C 10G
USB Downstream	1x USB-C 10G 1x USB-C MFDP (4K60/USB10G) 2x USB-A 10G 2x USB-A 2.0	1x USB-C 10G 5x USB-A 10G (1xBC1.2)
Card Reader	–	–
Audio in/out	1x	1x
LAN	1GbE	1GbE
PD	PD65W	Up to 2x PD65W
Power in	DC135W	DC180W



Model	VSD5480	VSD5481
Description	USB-C 10-in-1 Mini Dock	USB-C 10-in-1 Mini Dock
Max. Display	2x Displays	2x Displays
Legacy Video Port	2x DP1.4	2x DP1.4
Max. Resolution	2x4K60	2x4K60
USB Upstream	USB-C 5G	USB-C 5G
USB Downstream	5x USB-A 5G	5x USB-A 5G
Card Reader	1xSD4.0	1xSD4.0
Audio in/out	–	–
LAN	1GbE	1GbE
Power mode	USB Bus-power/Self-power	USB Bus-power/Self-power
PD	Up to 85W	Up to 85W
Power in	1x USB-C	1x USB-C
USB-C Cable	30cm	100cm



AIoT

Eldery care ecosystem

 matter



1 Human Presence Sensor

SD42000N1

- Edge computing + AI/ML
- False alarm rate < 3%
- Detects stationary human
- Pet friendly



2 Unattended Cooking Alert

SD42100N1

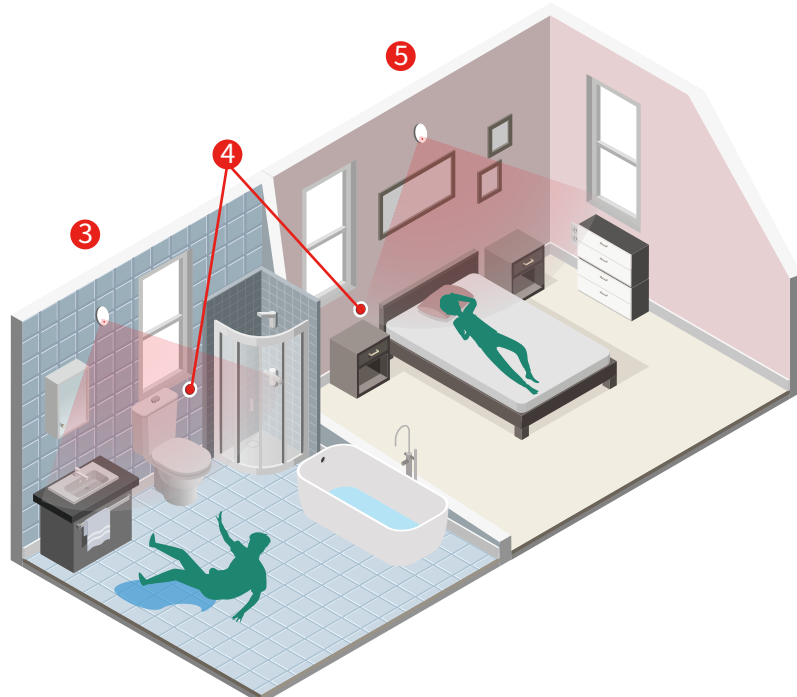
- Detects the cookware reaching 320°C
- Easy installation
- Real-time notifications



3 Fall Detector

SD42300N1

- Edge computing + AI/ML
- False alarm rate < 5%
- Waterproof IP65



4 Emergency Call Button

TR6B100N1

5 Vital Sign Detector

SD42400N1

Unattended Cooking Sensor

SD42100N1

The U.S. Fire Administration has reported in the past that approximately half of all home fires start in the kitchen. The #1 reason is unattended cooking.

The SD42100N1 is the solution for FIR Array, collaborate with human presence sensor SD42000N1 to perform the edge AI's detection and Stove temperature monitoring. The device will have audible warnings if :

- The unattended cooking behavior is detected
- The temperature on the cookware reaches 320°C is detected

The sensor will also send an alert message through a smart home gateway to notify a care giver/user on a phone app.

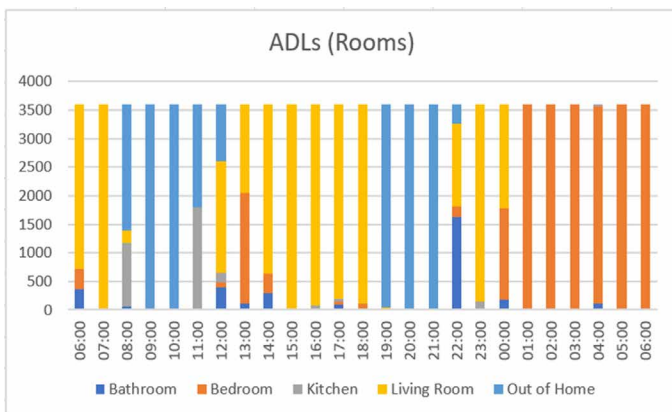


Human Presence Sensor

SD42000N1

The SD42000N1 Human Presence Sensor is designed for ultra-low fault alert applications. With the improved AI ISP, users can more accurately detect whether a room is occupied or vacant. The SD42000N1 can provide home activities for the elderly, making up for the lack of home activity data in the healthy aging plan.

- Edge AI (no image output)
- Low false alarm rate (< 3%)
- Stationary human detection
- Pet immunity (big & small)
- Fast response
 - Detected human presence < 1S
 - Detected no human presence < 3S



Use Case : ADLs (Rooms)

Build Activities of Daily Livings (ADLs) table with just human presence sensors.

Install human presence sensors in every room to understand time spent in different rooms each day.

Environmental Sensor

- ★ Human presence sensor (SD42000N1)
- ★ Fall detection sensor (SD42300N1)
 - Sleep state
 - Medication reminder



Home Safety

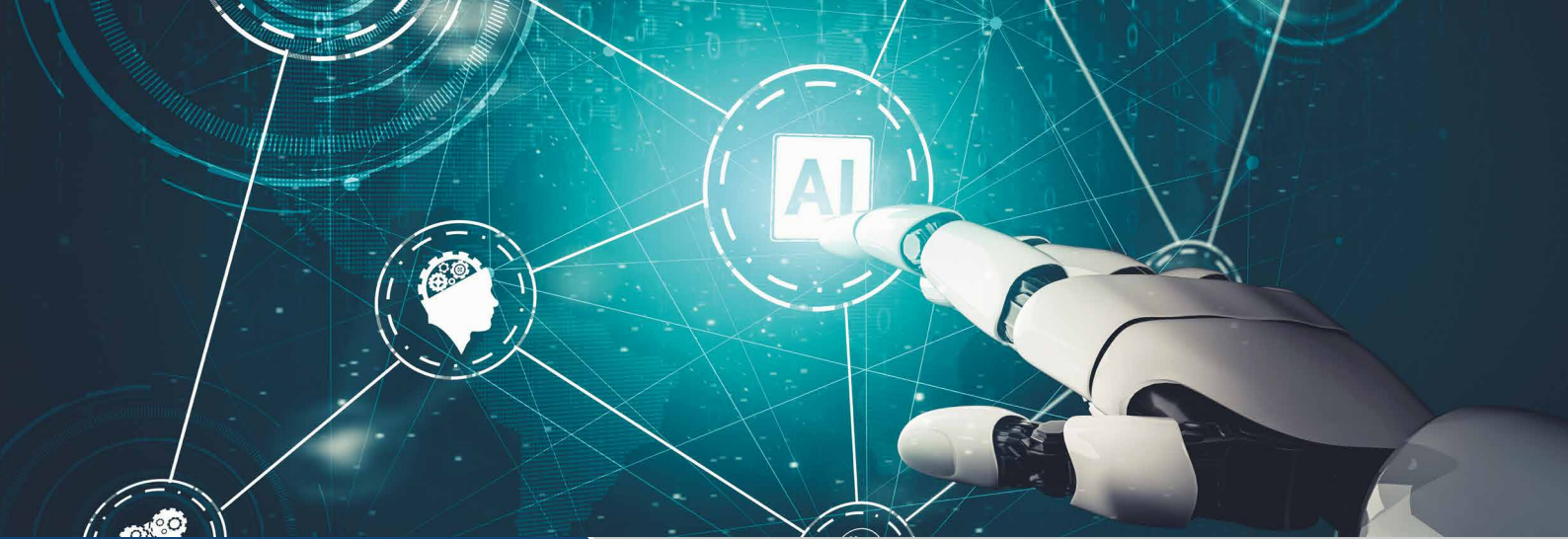
- ★ Unattended cooking alert (SD42100N1)
 - Emergency call button
 - Fire alarm
 - Anti-theft alarm



Smart Home

- ★ Smart Plug
- ★ Wall Outlet
 - Dimmer
 - Light Switch





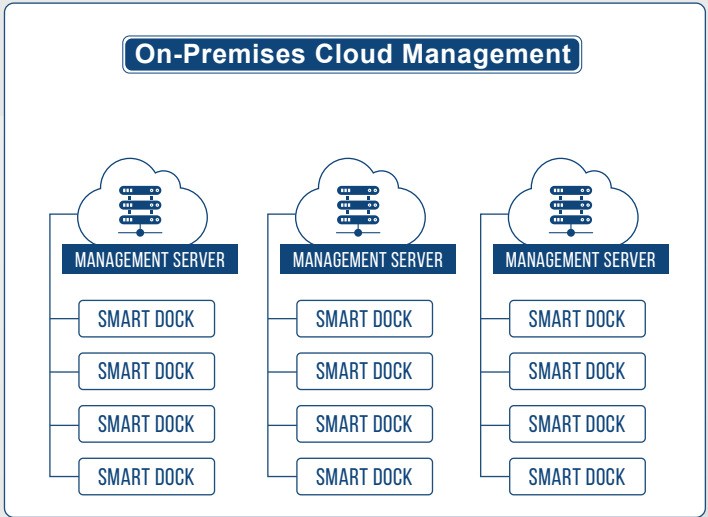
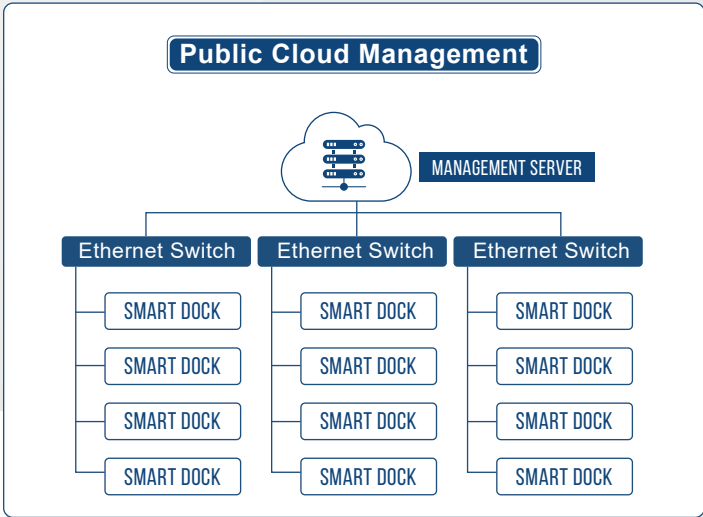
AI Software Products

Smart Dock Management System

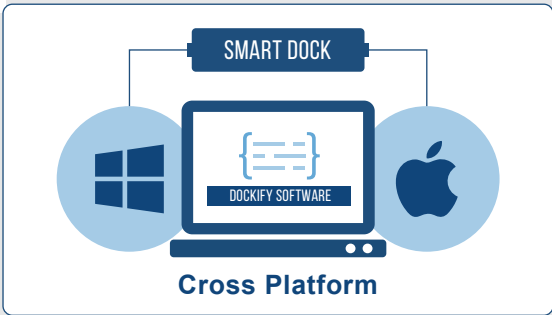
Good Way Cloud Management System is designed to manage docking stations for an entire company or organization, offering the flexibility to operate as either a public cloud or an on-premises server. This system provides IT managers with comprehensive tools to efficiently handle dock management tasks, including firmware updates, remote access control for USB peripherals and monitors.

With a rich set of features, the system allows IT managers to effortlessly implement access controls and even schedule automatic shutdowns of equipment after work hours to promote energy savings. The system's user-friendly web management interface provides a detailed, visual approach to managing all aspects of the docking stations, ensuring smooth and efficient operations.

One of the standout features of this system is that it requires no additional software installation on individual computers. Even in situations where no computers are connected, the docking stations can seamlessly connect to the server and perform all necessary functions, making it an incredibly versatile and powerful tool for any IT management team.



Dockify Software



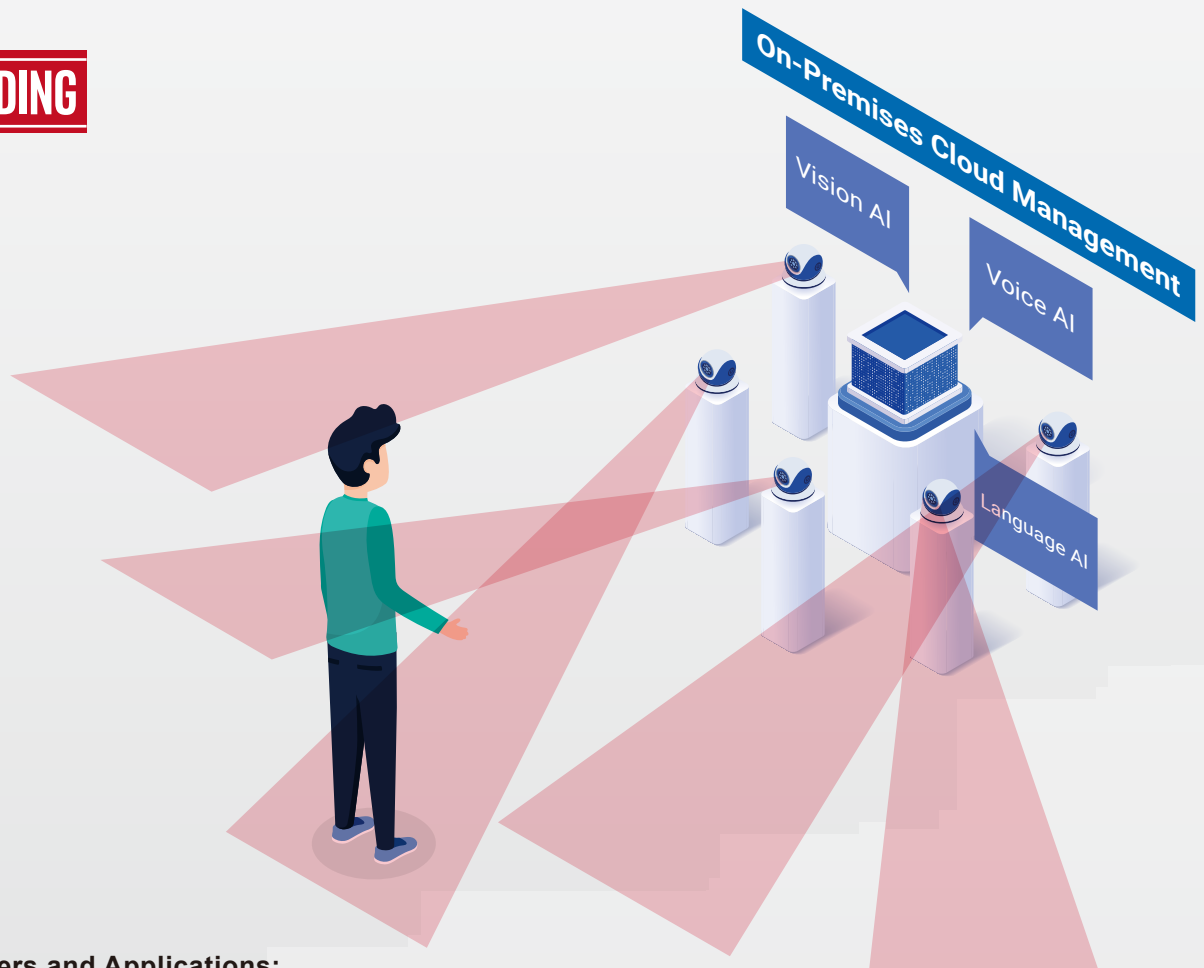
Good Way Dockify Software is designed for PC consumers, offering seamless integration and enhanced functionality with Good Way docking stations. It provides users with clear device information, version updates, and effective firmware upgrades to ensure compatibility with various devices. The software allows easy configuration of docking station features, especially in models with HMI elements, enabling stations to interact with computer applications for better productivity.

As the perfect bridge between devices and computers, Dockify extends its capabilities beyond docking stations to other Good Way products. Supporting both Windows and Mac systems, Dockify ensures users on different platforms can enjoy the convenience and enhanced docking experience it provides.

AI – Argus AI System Solution

Good Way Argus System features AI visual recognition to locate specific targets. It can control multiple IP PTZ cameras to maintain target tracking. Using language model, the device establishes a "Director Mode," where AI generates camera movement instructions for multiple cameras, achieving various effects that can be recorded or transmitted to backend storage and post-processing. Through voice communication, the AI natural language interface allows for directing camera movement styles or changing tracking targets (e.g., switching people, vehicles, or designated objects). The camera movement style is not limited to centralized tracking but can also be split or grouped (e.g., for search operations).

PATENT PENDING



Primary Customers and Applications:

ProAV Customers

Enhance live events, concerts, and studio productions with AI driven camera control for dynamic and automated multi-camera setups.

Security and Surveillance

Utilize AI tracking for continuous monitoring and automated response in large facilities, reducing the need for manual camera adjustments.

Large Shopping Malls

Implement AI-powered surveillance to track customer movement, optimize foot traffic, and enhance security protocols.

Casinos

Integrate AI systems for comprehensive security coverage, ensuring 24/7 monitoring of gaming areas to detect and prevent fraud.

Farms and Ranches

Deploy AI tracking for livestock monitoring, improving security and operational efficiency by automating surveillance across vast areas.

Independent Livestreamers

Empower content creators with automated camera management, allowing for seamless multi-camera production without a dedicated crew.

Conference Control Systems

Streamline conference recordings and broadcasts with AI managed cameras that follow speakers and focus on key activities, improving the experience for remote participants.

And Many More

The versatile applications of AI-driven camera control extend to numerous other industries, offering tailored solutions to meet specific needs.



GOOD WAY TECHNOLOGY CO., LTD.

3F, No. 135, Ln. 235, Baociao Rd., Sindian Dist.,
New Taipei City 231, Taiwan.

Tel : +886(2) 8919 1200

Website : www.goodway.com.tw

Fax : +886(2) 8919 1220

E-mail : sales@goodway.com.tw

October 2024

